

California Adolescent Sexual Health Work Group (ASHWG) 2008 Data for California Adolescent Births, AIDS, STD

July 2010

Special thanks to:

Joan Chow, MPH, DrPH

Chair Data Integration Subcommittee
Chief, Epidemiology Unit
Surveillance and Epidemiology Section
Sexually Transmitted Disease Control Branch
California Department of Public Health

Valorie Eckert, MPH

Research Scientist
Program Evaluation & Research and HIV/AIDS
Epidemiology
Office of AIDS, Center for Infectious Diseases
California Department of Public Health

Matthew Facer, PhD

Research Scientist
Program Evaluation & Research and HIV/AIDS
Epidemiology
Office of AIDS, Center for Infectious Diseases
California Department of Public Health

Denise Gilson

Chief, Surveillance and Data Management Unit
Surveillance and Epidemiology Section
Sexually Transmitted Disease Control Branch
California Department of Public Health

Marina Chabot, MSc

UCSF Family PACT Evaluation
Bixby Center for Global Reproductive Health
University of California, San Francisco

Paul Gibson, MS, MPH

Health Promotion Coordinator
Health Promotion and Health Education Unit
Disease Prevention Section
STD Control Branch, CA Department of Public Health

Sandi Goldstein, MPH

California Adolescent Health Collaborative
Oakland, CA

Liz Worthy

California Adolescent Health Collaborative
Oakland, CA

The California Adolescent Sexual Health Work Group (ASHWG) is a standing work group of program managers from the California Department of Public Health, California Department of Education, and key non-governmental organizations committed to working more effectively to address the sexual and reproductive health of California adolescents. Its vision is to create a coordinated, collaborative, and integrated system among government and non-government organizations to promote and protect the sexual and reproductive health of youth in California.

The ASHWG Data Integration sub-committee's intention is to improve comparability and expand access to and use of HIV, STD, and Teen Birth data. Members of this Sub-committee include epidemiologists from California Department of Public Health branches of Sexually Transmitted Diseases (STD) Control, Office of AIDS (OA), Maternal, Child and Adolescent Health (MCAH) and non-governmental "end users" of their data.

The ASHWG Data Tables and Charts for Adolescent Births, AIDS and STD are presented with standardized data elements across all conditions, i.e. age, race, gender, and timeframe. The purpose is to make useable data readily available for improved program planning, implementation and evaluation by programs serving adolescents at risk.

Resources

- Centers for Disease Control and Prevention. *Sexually Transmitted Disease Surveillance, 2008*. Atlanta, GA: U.S. Department of Health and Human Services; November 2009.
<http://www.cdc.gov/std/stats08/main.htm>
- *Prevalence of Sexually Transmitted Infections Among Female Adolescents Aged 14 to 19 in the United States*, Geraldine M. McQuillan, Stuart M. Berman and Lauri E. Markowitz, Sara E. Forhan, Sami L. Gottlieb, Maya R. Sternberg, Fujie Xu, S. Deblina Datta, *Pediatrics*, Volume 124, Number 6, December 2009.
<http://pediatrics.aappublications.org/cgi/content/abstract/peds.2009-0674v1>

Adolescent Birth Rates - California

Adolescent Birth Rates* and Births by Mother's Age, For California Females** Age 10-19, 2000-2009																				
Age Group	2000		2001		2002		2003		2004		2005		2006		2007		2008		2009	
	Births	Birth Rate	Births	Birth Rate	Births	Birth Rate	Births	Birth Rate	Births	Birth Rate	Births	Birth Rate	Births	Birth Rate	Births	Birth Rate	Births	Birth Rate	Births	Birth Rate
Age 10-14	895	0.7	809	0.6	743	0.5	710	0.5	695	0.5	756	0.5	681	0.5	663	0.5	624	0.5	548	0.4
Age 15-17	18,887	26.5	17,307	23.8	16,660	22.4	16,193	21.2	16,263	20.6	16,740	20.3	17,208	20.0	17,582	19.9	17,008	19.1	15,418	17.5
Age 18-19	36,486	76.8	35,659	73.5	33,541	68.5	33,137	66.5	33,474	65.5	33,277	63.9	35,562	66.3	35,811	64.3	34,696	59.6	32,393	53.5
Age 15-19	55,373	46.7	52,966	43.7	50,201	40.7	49,330	39.1	49,737	38.2	50,017	37.2	52,770	37.8	53,393	37.1	51,704	35.2	47,811	32.1

*Rate per 1,000 age-specific females

** Births included in these calculations are to mothers who report a California residence on the birth certification.

Adolescent Birth Rates* and Births by Race/Ethnicity, For California Females** Age 15-19, 2000- 2009																				
Race/Ethnicity	2000		2001		2002		2003		2004		2005		2006		2007		2008		2009	
	Births	Birth Rate	Births	Birth Rate	Births	Birth Rate	Births	Birth Rate	Births	Birth Rate	Births	Birth Rate	Births	Birth Rate	Births	Birth Rate	Births	Birth Rate	Births	Birth Rate
White (Non Hispanic)	9,871	21.6	8,989	19.2	8,375	17.5	7,947	16.3	7,340	14.8	7,028	13.9	7,118	13.9	6,995	13.6	6,690	13.3	5,976	11.9
African American (Non Hispanic)	4,841	58.0	4,354	50.1	3,913	43.7	3,890	41.9	3,872	40.2	3,819	38.4	4,143	40.8	4,169	40.5	4,099	39.9	3,741	37.0
American Indian (Non Hispanic)	316	43.5	283	37.0	276	34.8	250	30.1	245	28.3	281	31.2	271	29.3	278	29.0	262	27.1	252	25.9
Asian/Pacific Islander (Non Hispanic)	2,286	16.4	2,125	15.0	1,919	13.5	1,809	12.6	1,679	11.6	1,675	11.6	1,549	10.9	1,617	10.9	1,432	9.6	1,271	8.5
Hispanic	36,892	78.7	36,051	76.1	34,613	72.0	34,252	69.1	35,315	68.1	36,025	65.4	38,243	65.0	38,738	61.9	37,524	56.9	34,844	50.8

*Rate per 1,000 age-specific females

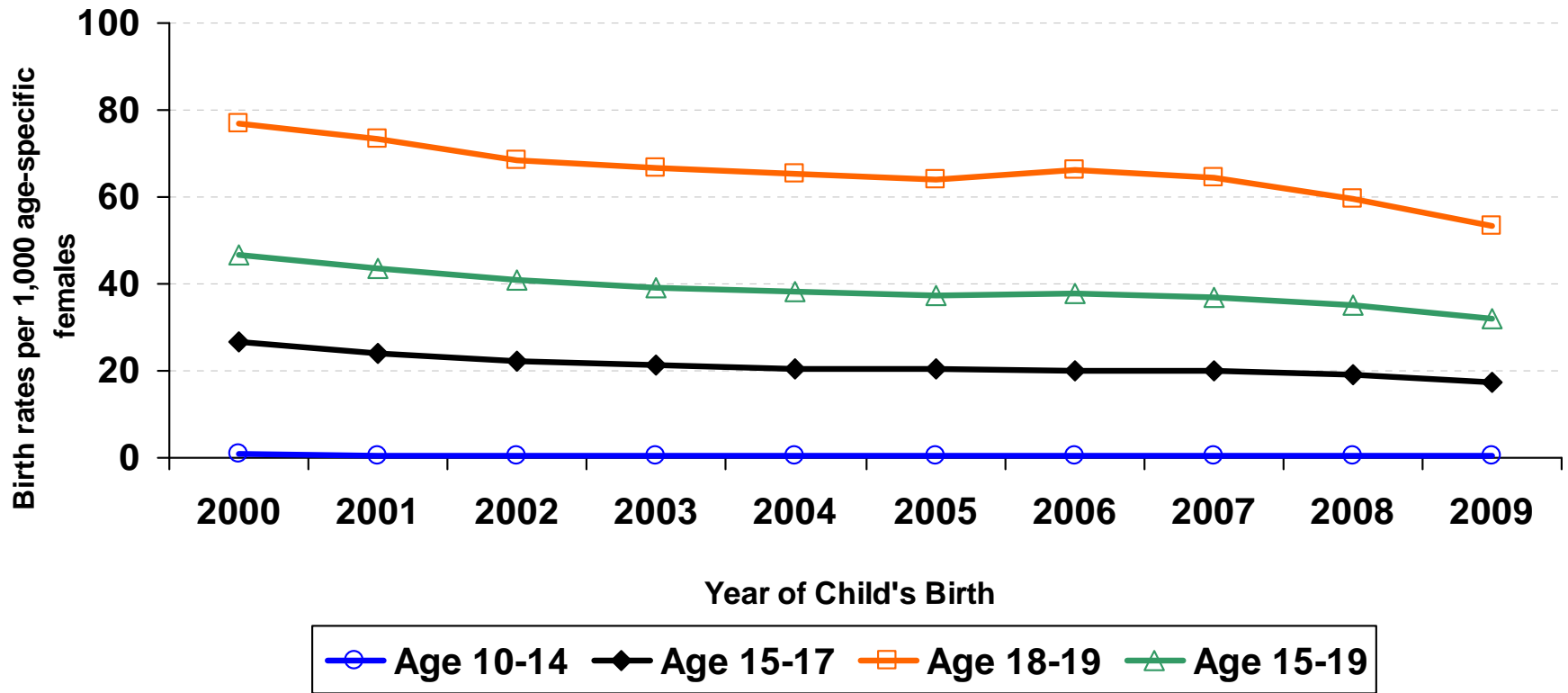
** Births included in these calculations are to mothers who report a California residence on the birth certification.

Source: Number of births are derived from the California Birth Statistical Master File, 2000-2008.

State of California, Department of Finance, *Race/Ethnic Population with Age and Sex Detail, 2000-2050*. Sacramento, California, July 2007

Prepared by: California Department of Public Health, Maternal, Child and Adolescent Health Program.

Birth Rates for Females Age 10-19 by Mother's Age California, 2000 - 2009

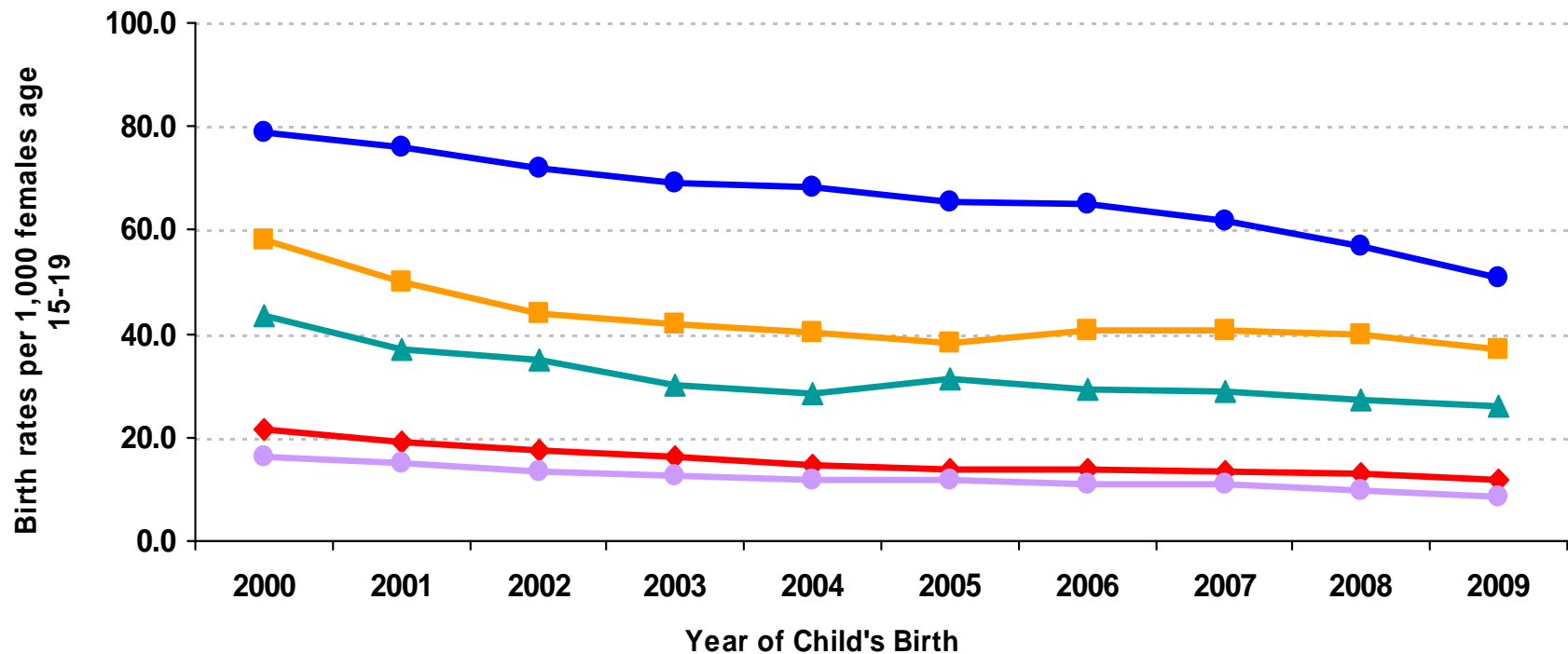


Source: California Birth Statistical Master File, 2000-2008.

California Department of Finance, Race/Ethnic Population with Age & Sex Detail, 2000-2050, Sacramento, CA, July 2007.

Prepared by: California Department of Public Health, Maternal, Child and Adolescent Health Program.

Birth Rates for Females Age 15-19 by Race/Ethnicity California, 2000 - 2009



◆ White (Non Hispanic)
 ■ African American (Non Hispanic)
 ▲ American Indian (Non Hispanic)
● Asian/Pacific Islander (Non Hispanic)
 ● Hispanic

Source: California Birth Statistical Master File, 2000-2008.
 California Department of Finance, Race/Ethnic Population with Age & Sex Detail, 2000-2050, Sacramento, CA, July 2007.
 Prepared by: California Department of Public Health, Maternal, Child and Adolescent Health Program.

Living Adolescent/Young Adult HIV/AIDS Rates - California

Living HIV/AIDS Cases and Rates Among 10-24 Year Olds by Race/Ethnicity, Age Group and Gender, Cumulative Cases Reported Through December 31, 2009						
AGE GROUP BY RACE/ETHNICITY			FEMALE		MALE	
			Cases	Rate	Cases	Rate
White						
Ages	10 - 14		*	^	25	5.6
	15 - 17		35	12.1	60	19.6
	18 - 19		51	23.7	171	74.4
	(15 - 19)		86	17.1	231	43.1
	20 - 24		247	48.6	1,876	341.8
African American/Black						
Ages	10 - 14		20	24.4	19	22.3
	15 - 17		31	52.7	80	131.5
	18 - 19		74	174.9	232	517.3
	(15 - 19)		105	103.8	312	295.2
	20 - 24		339	356.6	1,209	1181.3
Hispanic/Latino						
Ages	10 - 14		27	4.2	33	4.9
	15 - 17		47	11.2	108	24.7
	18 - 19		103	38.8	338	119.9
	(15 - 19)		150	21.9	446	62.0
	20 - 24		475	85.6	2,790	463.5
Other/Unknown						
Ages	10 - 14		*	-	3	-
	15 - 17		4	-	9	-
	18 - 19		10	-	48	-
	(15 - 19)		14	-	57	-
	20 - 24		50	-	329	-
TOTAL						
Ages	10 - 14		63	4.7	80	5.7
	15 - 17		117	13.2	257	27.8
	18 - 19		238	39.3	789	122.8
	(15 - 19)		355	23.9	1,046	66.7
	20 - 24		1,111	81.8	6,204	424.2

*Data withheld to ensure case confidentiality.

^Rates not calculated for suppressed case counts.

Other/Unknown includes Asian/Pacific Islanders, Native Americans, Multi-Race and those with missing race/ethnicity information.

Source: California Department of Public Health, Office of AIDS, HIV/AIDS Case Registry Section, data as of July 6, 2010.

California Department of Finance, Race/Ethnic Population with Age & Sex Detail, 2000-2050, Sacramento, CA, July 2007

For more information, call the HIV/AIDS Case Registry Section at (916) 449-5866.

Rundate: 08/19/2010, MF.

Living Adolescent/Young Adult HIV/AIDS Rates - California

Living HIV/AIDS Cases and Rates Among 10-24 Year Olds for MSM and Heterosexual Contact Modes of Exposure by Race/Ethnicity, Age Group and Gender. Cumulative Cases Reported Through December 31, 2009						
AGE GROUP BY RACE/ETHNICITY		FEMALE		MALE		
		Cases	Rate	Cases	Rate	
White	Ages	10 - 14	*	^	*	^
		15 - 17	17	5.9	37	12.1
		18 - 19	22	10.2	124	54.0
		(15 - 19)	39	7.7	161	30.1
		20 - 24	138	27.2	1,434	261.2
African American/Black	Ages	10 - 14	*	^	*	^
		15 - 17	13	22.1	63	103.5
		18 - 19	42	99.3	195	434.8
		(15 - 19)	55	54.4	258	244.1
		20 - 24	196	206.2	1,004	981.0
Hispanic/Latino	Ages	10 - 14	*	^	*	^
		15 - 17	24	5.7	76	17.4
		18 - 19	65	24.5	264	93.6
		(15 - 19)	89	13.0	340	47.3
		20 - 24	305	55.0	2,271	377.3
Other/Unknown	Ages	10 - 14	0	-	0	-
		15 - 17	1	-	4	-
		18 - 19	2	-	35	-
		(15 - 19)	3	-	39	-
		20 - 24	33	-	281	-
TOTAL	Ages	10 - 14	5	0.4	12	0.9
		15 - 17	55	6.2	180	19.5
		18 - 19	131	21.6	618	96.2
		(15 - 19)	186	12.5	798	50.9
		20 - 24	672	49.5	4,990	341.2

*Data withheld to ensure case confidentiality.

^Rates not calculated for suppressed case counts.

MSM=Men who have sex with men.

Other/Unknown includes Asian/Pacific Islanders, Native Americans, Multi-Race and those with missing race/ethnicity information.

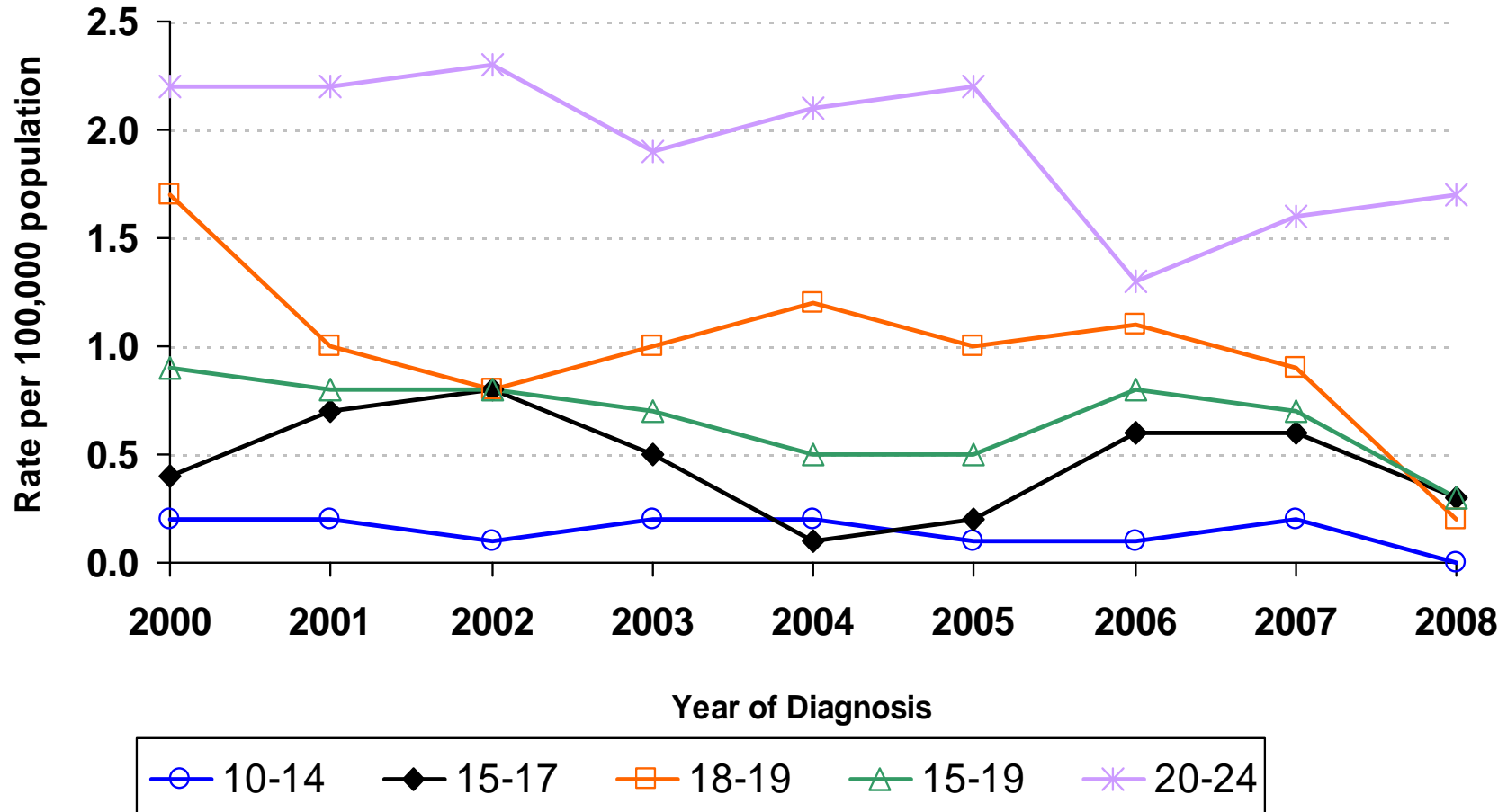
Source: California Department of Public Health, Office of AIDS, HIV/AIDS Case Registry Section, data as of July 6, 2010.

California Department of Finance, Race/Ethnic Population with Age & Sex Detail, 2000-2050, Sacramento, CA, July 2007.

For more information, call the HIV/AIDS Case Registry Section at (916) 449-5866.

Rundate: 08/19/2010, MF.

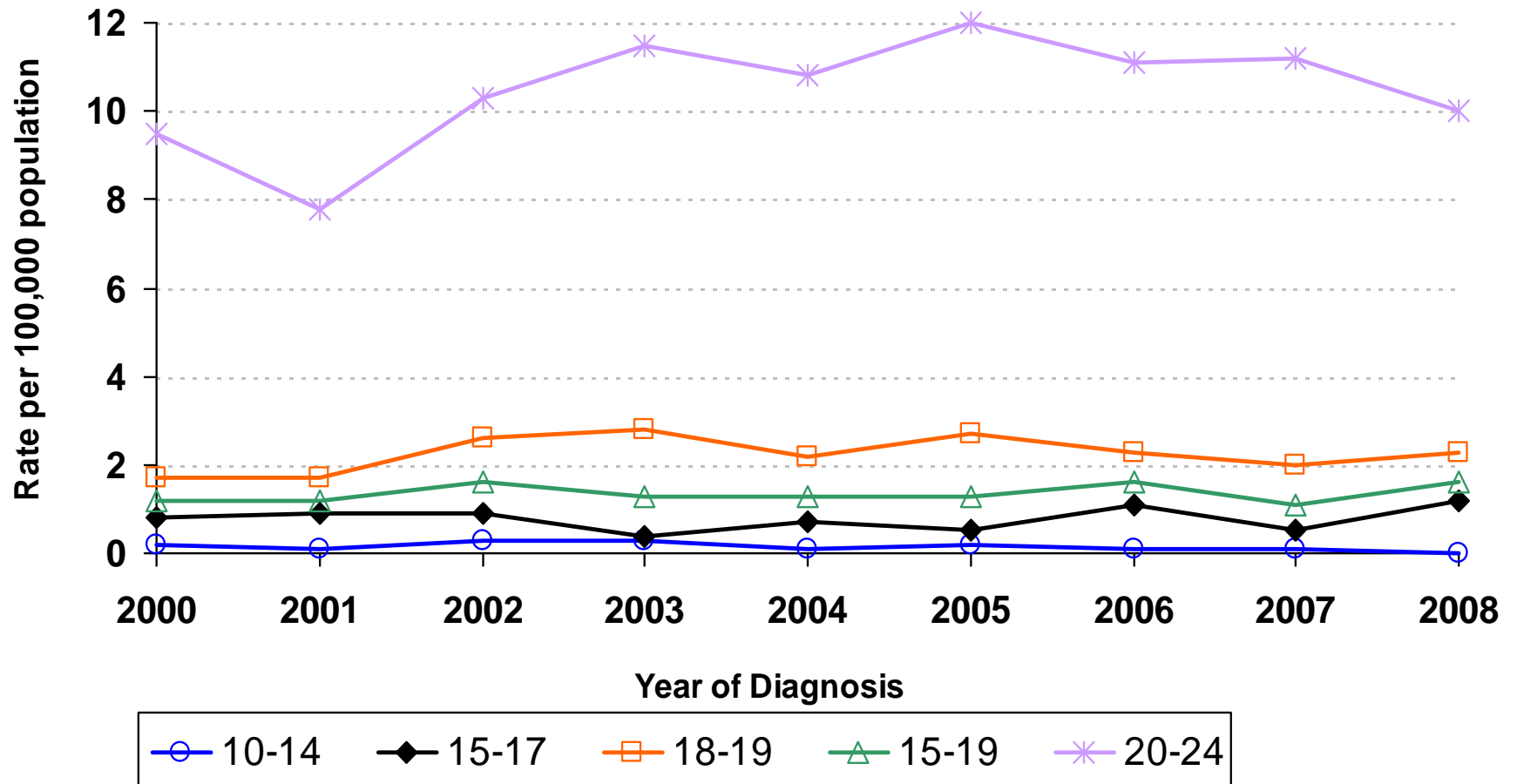
AIDS Cases by Year of Diagnosis for Females by Age Group California, 2000 - 2008



Source: California Department of Public Health, Office of AIDS, HIV/AIDS Case Registry Section, data as of October 31, 2007.
 California Department of Finance, Race/Ethnic Population with Age & Sex Detail, 2000-2050, Sacramento, CA, July 2007.
 For more information, call the HIV/AIDS Case Registry Section at (916) 449-5866.



AIDS Cases by Year of Diagnosis for Males by Age Group California, 2000 - 2008



Source: California Department of Public Health, Office of AIDS, HIV/AIDS Case Registry Section, data as of October 31, 2007.
 California Department of Finance, Race/Ethnic Population with Age & Sex Detail, 2000-2050, Sacramento, CA, July 2007.
 For more information, call the HIV/AIDS Case Registry Section at (916) 449-5866.



Chlamydia Rates for Adolescent Females by Age Group California, 2000-2008

Chlamydia Rates for Adolescent Females by Age Group California, 2000-2008																		
Age Group	2000		2001		2002		2003		2004		2005		2006		2007		2008	
	Cases	Rate	Cases	Rate	Cases	Rate	Cases	Rate	Cases	Rate	Cases	Rate	Cases	Rate	Cases	Rate	Cases	Rate
10-14	1,362	107.2	1,247	94.1	1,323	96.4	1,226	87.0	1,305	91.1	1,192	83.2	1,138	80.3	1,131	81.2	1,143	83.8
15-17	11,399	1,600.9	11,386	1,567.3	11,947	1,607.5	12,269	1,605.7	12,653	1,601.6	13,175	1,597.4	13,515	1,574.0	13,724	1,556.0	14,054	1,582.4
18-19	13,937	2,934.7	14,345	2,958.8	15,010	3,063.9	15,715	3,152.5	16,643	3,258.9	17,341	3,332.1	18,324	3,415.6	19,594	3,519.6	20,607	3,540.1
15-19	25,336	2,134.5	25,731	2,124.2	26,957	2,186.1	27,984	2,216.4	29,296	2,252.3	30,516	2,268.6	31,839	2,282.2	33,318	2,315.8	34,661	2,357.5

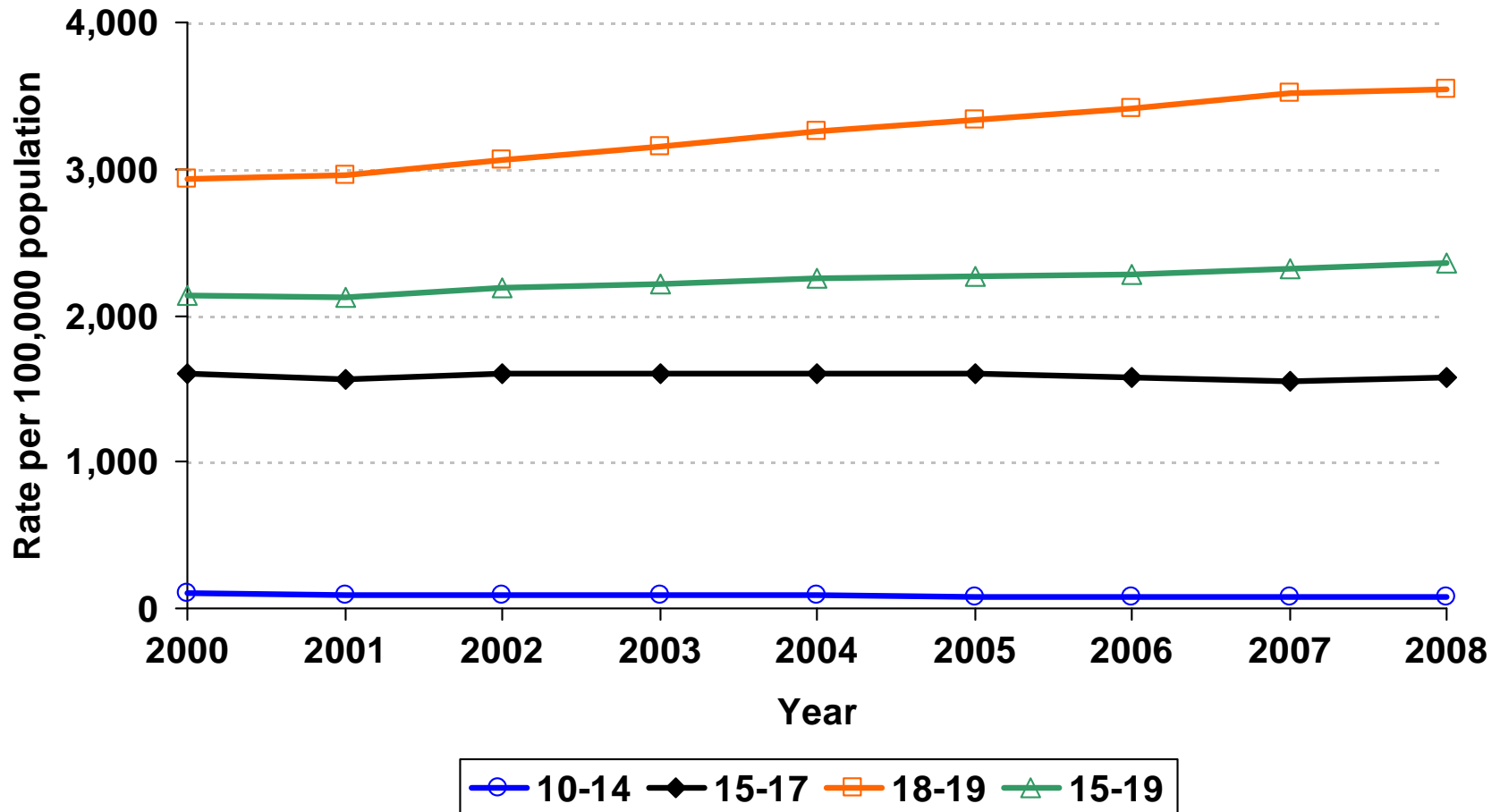
* Rate per 100,000 population

Chlamydia Rates by Race/Ethnicity, For Female California Residents Age 15-19, 2000- 2008																		
Race/Ethnicity	2000		2001		2002		2003		2004		2005		2006		2007		2008	
	Cases	Rate	Cases	Rate	Cases	Rate	Cases	Rate	Cases	Rate	Cases	Rate	Cases	Rate	Cases	Rate	Cases	Rate
Native American/Alaskan																		
Native	106	1,459.1	98	1,282.7	109	1,374.4	129	1,553.7	83	960.4	111	1,232.8	116	1,253.2	149	1,555.8	139	1,437.9
Asian/Pacific Islander	758	544.0	759	537.3	880	618.8	872	607.9	878	607.6	874	606.2	880	603.4	911	616.6	931	625.2
African American/Black	4,164	4,985.0	4,120	4,745.3	4,427	4,938.9	4,821	5,193.4	5,236	5,437.6	5,945	5,973.7	6,383	6,281.3	6,566	6,372.2	6,905	6,718.5
Hispanic/Latino	7,799	1,664.0	8,268	1,744.4	8,686	1,806.1	9,117	1,838.2	9,405	1,812.5	9,971	1,810.8	10,237	1,738.8	10,615	1,696.7	10,884	1,651.7
White	3,596	788.2	3,423	729.9	3,811	795.4	4,297	880.5	4,356	875.6	4,144	819.1	4,060	791.8	4,383	851.5	4,239	829.5

* Rate per 100,000 age- and gender-specific population

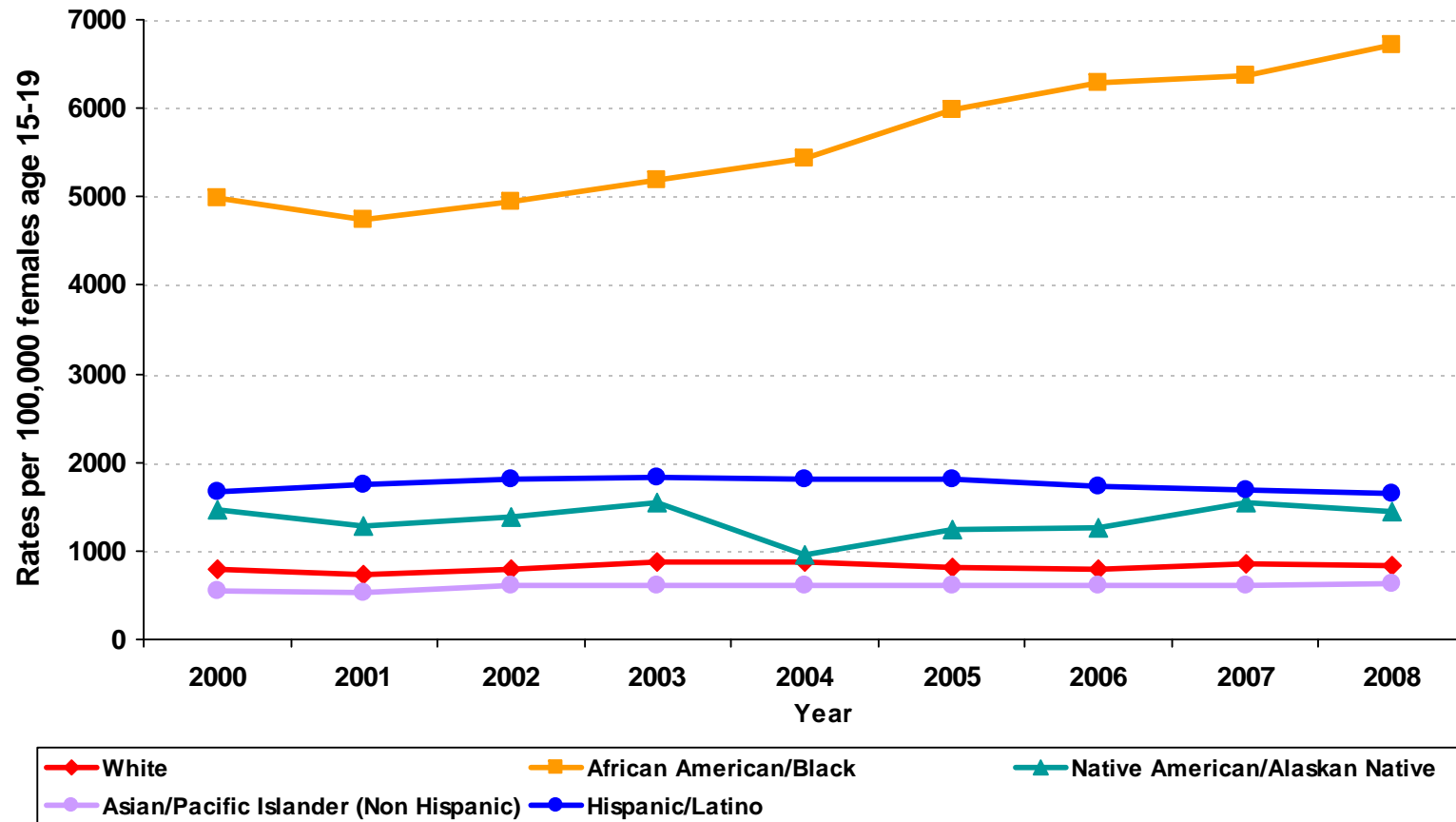
Source: California Department of Public Health, STD Control Branch
 California Department of Finance, Race/Ethnic Population with Age & Sex Detail, 2000-2050, Sacramento, CA, July 2007.
 Prepared by: California Department of Public Health, STD Control Branch, June 2010

Chlamydia Rates for Adolescent Females by Age Group California, 2000–2008



Source: California Department of Public Health, STD Control Branch
California Department of Finance, Race/Ethnic Population with Age & Sex Detail, 2000-2050, Sacramento, CA, July 2007.
Prepared by: California Department of Public Health, STD Control Branch, June 2010

Chlamydia Rates for Females Age 15-19 by Race/Ethnicity California, 2000 - 2008



Source: California Department of Public Health, STD Control Branch
 California Department of Finance, Race/Ethnic Population with Age & Sex Detail, 2000-2050, Sacramento, CA, July 2007.
 Prepared by: California Department of Public Health, STD Control Branch, June 2010

Chlamydia Rates for Adolescent Males by Age Group California, 2000-2008

Chlamydia Rates for Adolescent Males by Age Group, California, 2000-2008																		
Age Group	2000		2001		2002		2003		2004		2005		2006		2007		2008	
	Cases	Rate	Cases	Rate	Cases	Rate	Cases	Rate	Cases	Rate	Cases	Rate	Cases	Rate	Cases	Rate	Cases	Rate
10-14	154	11.5	162	11.6	165	11.5	134	9.1	174	11.6	142	9.5	148	10.0	143	9.8	179	12.6
15-17	2,463	324.2	2,567	334.4	2,629	336.5	2,698	336.1	2,761	333.2	3,066	354.3	3,200	355.1	3,353	362.3	3,525	378.6
18-19	2,768	534.1	2,964	560.4	3,099	585.1	3,402	640.0	3,652	674.0	3,922	709.8	4,200	737.1	4,723	799.2	5,125	829.5
15-19	5,231	409.3	5,531	426.6	5,728	437.0	6,100	457.2	6,413	467.9	6,988	492.9	7,400	503.1	8,076	532.6	8,650	558.5

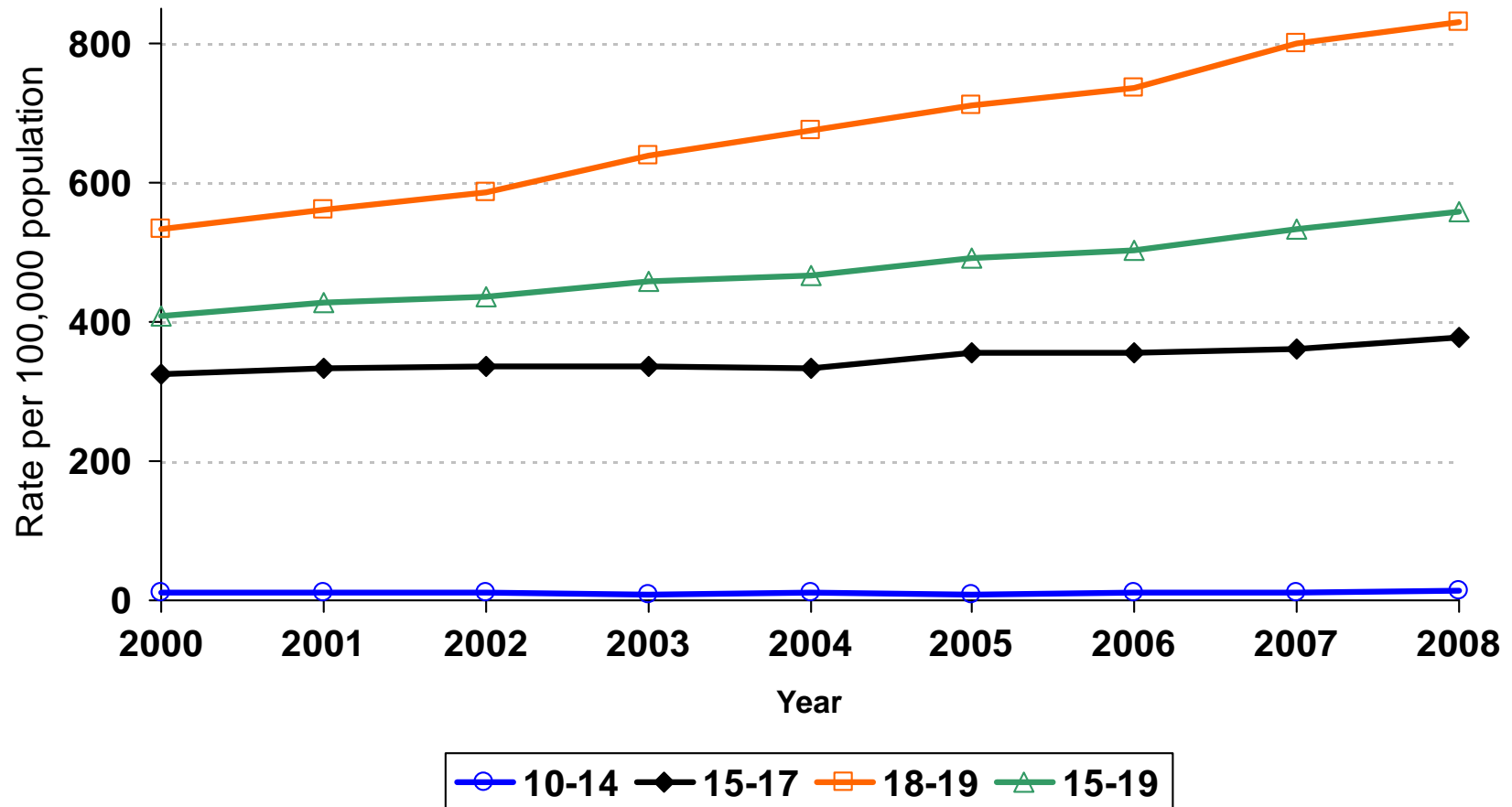
* Rate per 100,000 population

Chlamydia Rates by Race/Ethnicity, For Male California Residents Age 15-19, 2000- 2008																		
Race/Ethnicity	2000		2001		2002		2003		2004		2005		2006		2007		2008	
	Cases	Rate	Cases	Rate	Cases	Rate	Cases	Rate	Cases	Rate	Cases	Rate	Cases	Rate	Cases	Rate	Cases	Rate
Native American/ Alaskan Native	14	182.9	16	198.0	20	235.8	25	285.0	21	231.3	18	191.5	16	165.8	18	182.3	21	210.1
Asian/Pacific Islander	127	86.5	129	85.9	134	88.2	133	86.7	146	94.4	142	92.1	117	75.3	170	108.1	147	93.2
African American/Black	1,294	1,450.5	1,253	1,352.8	1,344	1,410.9	1,475	1,506.4	1,625	1,608.1	1,885	1,809.9	2,099	1,974.6	2,226	2,069.0	2,433	2,267.1
Hispanic/Latino	1,768	341.5	1,948	379.1	1,979	386.3	2,075	397.2	2,151	395.4	2,242	388.3	2,279	368.5	2,418	367.9	2,596	375.5
White	534	110.0	534	106.9	540	105.9	662	127.9	703	133.5	676	126.1	650	119.5	728	133.4	697	128.4

* Rate per 100,000 age- and gender-specific population

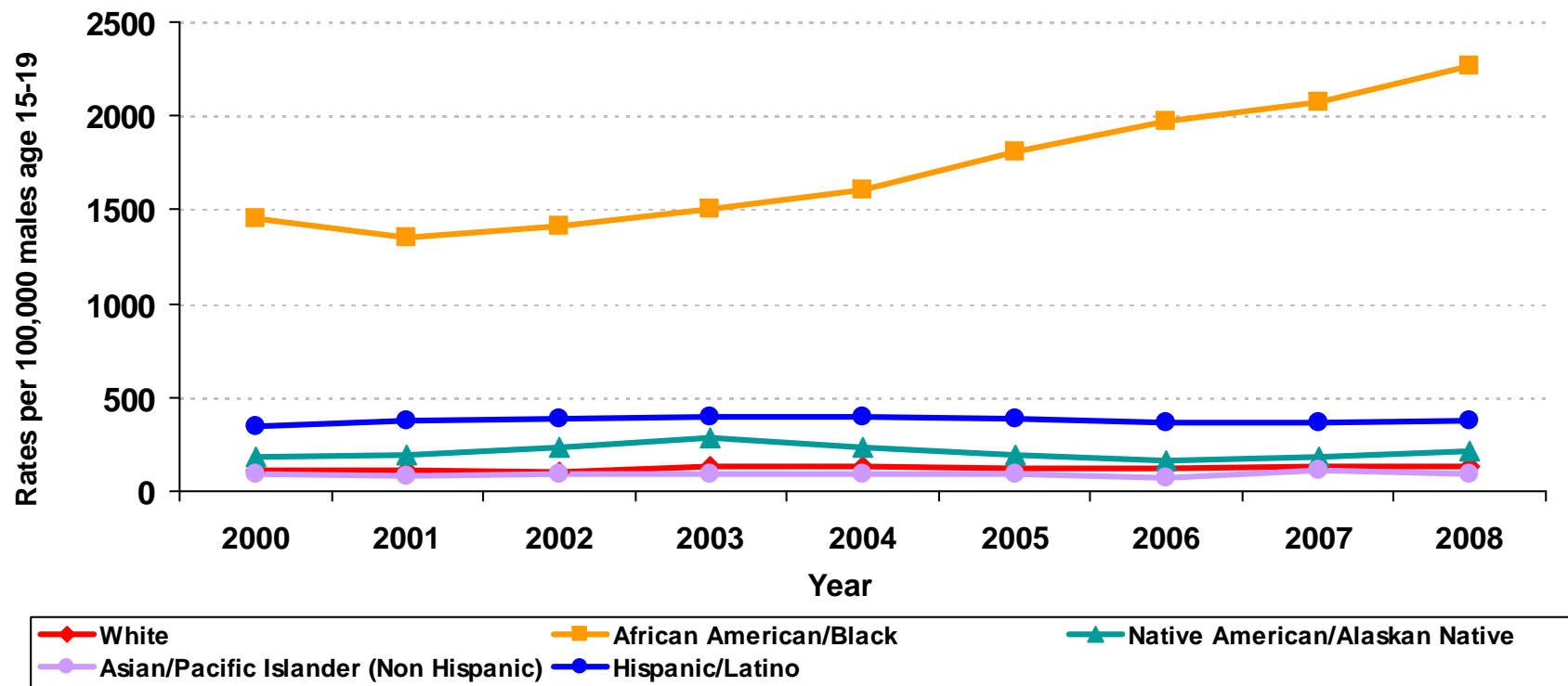
Source: California Department of Public Health, STD Control Branch
 California Department of Finance, Race/Ethnic Population with Age & Sex Detail, 2000-2050, Sacramento, CA, July 2007.
 Prepared by: California Department of Public Health, STD Control Branch, June 2010

Chlamydia Rates for Adolescent Males by Age Group California, 2000–2008



Source: California Department of Public Health, STD Control Branch
California Department of Finance, Race/Ethnic Population with Age & Sex Detail, 2000-2050, Sacramento, CA, July 2007.
Prepared by: California Department of Public Health, STD Control Branch, June 2010

Chlamydia Rates for Males Age 15-19 by Race/Ethnicity California, 2000 - 2008



Source: California Department of Public Health, STD Control Branch
 California Department of Finance, Race/Ethnic Population with Age & Sex Detail, 2000-2050, Sacramento, CA, July 2007.
 Prepared by: California Department of Public Health, STD Control Branch, June 2010

Gonorrhea Rates for Adolescent Females by Age Group California 2000-2008

Gonorrhea Rates for Adolescent Females by Age Group California, 2000-2008																		
Age Group	2000		2001		2002		2003		2004		2005		2006		2007		2008	
	Cases	Rate	Cases	Rate	Cases	Rate	Cases	Rate	Cases	Rate	Cases	Rate	Cases	Rate	Cases	Rate	Cases	Rate
10-14	257	20.2	273	20.6	240	17.5	224	15.9	297	20.7	289	20.2	255	18.0	213	15.4	201	14.7
15-17	1,648	231.4	1,718	236.5	1,769	238.0	1,756	229.8	1,932	244.5	2,403	291.4	2,228	259.5	2,170	246.1	1,680	189.2
18-19	1,647	346.8	1,890	389.8	1,882	384.2	2,000	401.2	2,387	467.4	2,635	506.3	2,796	521.2	2,691	483.2	2,161	371.2
15-19	3,295	277.6	3,608	297.9	3,651	296.1	3,756	297.5	4,319	332.0	5,038	374.5	5,024	360.1	4,861	337.9	3,841	261.2

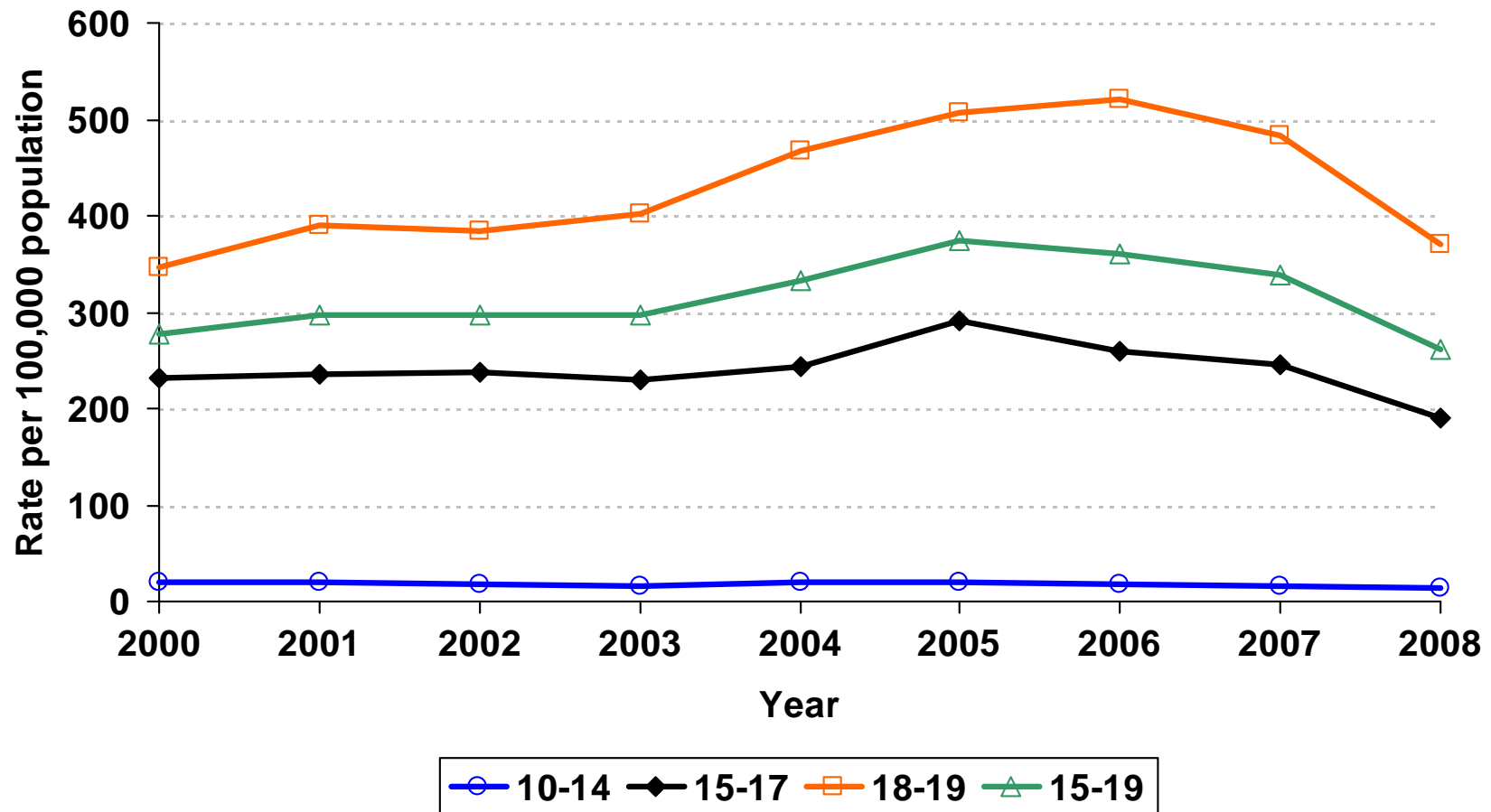
* Rate per 100,000 population

Gonorrhea Rates by Race/Ethnicity, For Female California Residents Age 15-19, 2000-2008																		
Race/Ethnicity	2000		2001		2002		2003		2004		2005		2006		2007		2008	
	Cases	Rate	Cases	Rate	Cases	Rate	Cases	Rate	Cases	Rate	Cases	Rate	Cases	Rate	Cases	Rate	Cases	Rate
Native American/Alaskan Native	9	123.9	13	170.2	12	151.3	6	72.3	10	115.7	16	177.7	27	291.7	24	250.6	9	93.1
Asian/Pacific Islander	50	35.9	59	41.8	55	38.7	53	36.9	67	46.4	85	59.0	107	73.4	98	66.3	64	43.0
African American/Black	1,283	1,536.0	1,331	1,533.0	1,382	1,541.8	1,324	1,426.3	1,505	1,563.0	1,789	1,797.6	1,776	1,747.7	1,852	1,797.3	1,590	1,547.1
Hispanic/Latino	503	107.3	593	125.1	628	130.6	700	141.1	840	161.9	969	176.0	1,010	171.6	847	135.4	623	94.5
White	307	67.3	322	68.7	322	67.2	487	99.8	527	105.9	583	115.2	513	100.0	454	88.2	327	64.0

* Rate per 100,000 age- and gender-specific population

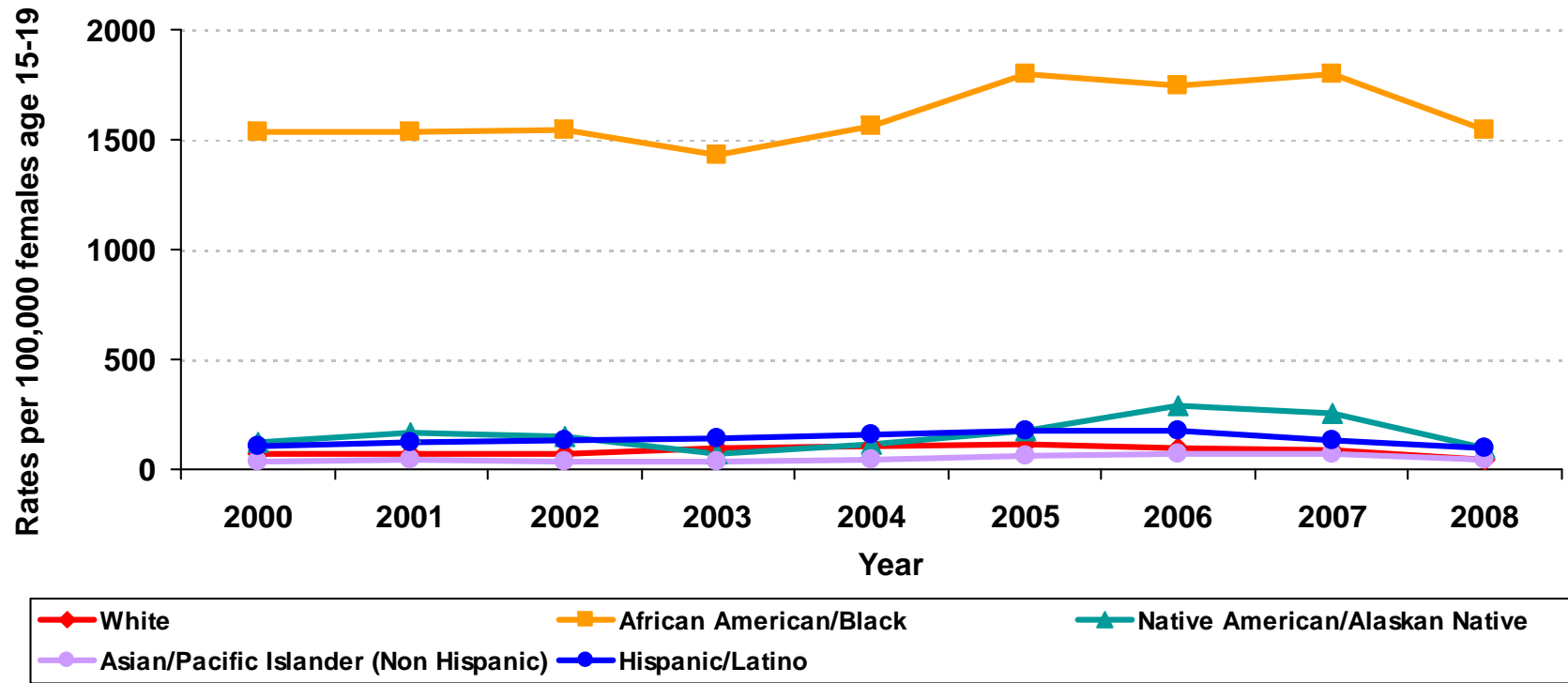
Source: California Department of Public Health, STD Control Branch
California Department of Finance, Race/Ethnic Population with Age & Sex Detail, 2000-2050, Sacramento, CA, July 2007.
Prepared by: California Department of Public Health, STD Control Branch, June 2010

Gonorrhea Rates for Adolescent Females by Age Group California, 2000–2008



Source: California Department of Public Health, STD Control Branch
 California Department of Finance, Race/Ethnic Population with Age & Sex Detail, 2000-2050, Sacramento, CA, July 2007.
 Prepared by: California Department of Public Health, STD Control Branch, June 2010

Gonorrhea Rates for Females Age 15-19 by Race/Ethnicity California, 2000 - 2008



Source: California Department of Public Health, STD Control Branch
 California Department of Finance, Race/Ethnic Population with Age & Sex Detail, 2000-2050, Sacramento, CA, July 2007.
 Prepared by: California Department of Public Health, STD Control Branch, June 2010

Gonorrhea Rates for Adolescent Males by Age Group California 2000-2008

Gonorrhea Rates for Adolescent Males by Age Group, California, 2000–2008																		
Age Group	2000		2001		2002		2003		2004		2005		2006		2007		2008	
	Cases	Rate	Cases	Rate	Cases	Rate	Cases	Rate	Cases	Rate	Cases	Rate	Cases	Rate	Cases	Rate	Cases	Rate
10-14	38	2.8	30	2.2	28	1.9	41	2.8	45	3.0	65	4.3	56	3.8	50	3.4	41	2.9
15-17	474	62.4	472	61.5	533	68.2	553	68.9	714	86.2	807	93.3	783	86.9	839	90.7	659	70.8
18-19	904	174.4	932	176.2	958	180.9	1,035	194.7	1,203	222.0	1,392	251.9	1,444	253.4	1,453	245.9	1,298	210.1
15-19	1,378	107.8	1,404	108.3	1,491	113.7	1,588	119.0	1,917	139.9	2,199	155.1	2,227	151.4	2,292	151.1	1,957	126.4

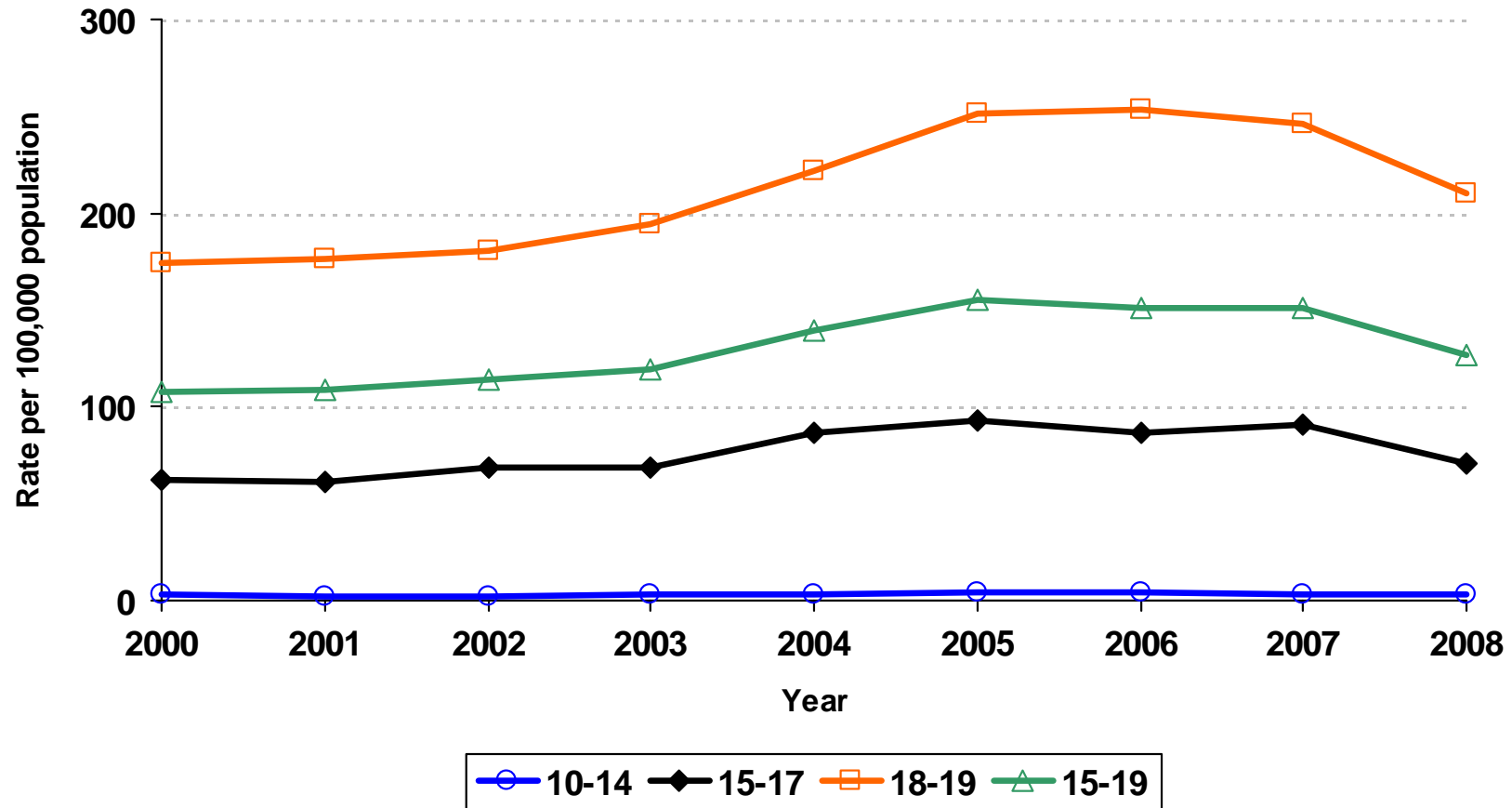
* Rate per 100,000 population

Gonorrhea Rates by Race/Ethnicity, For Male California Residents Age 15-19, 2000- 2008																		
Race/Ethnicity	2000		2001		2002		2003		2004		2005		2006		2007		2008	
	Cases	Rate	Cases	Rate	Cases	Rate	Cases	Rate	Cases	Rate	Cases	Rate	Cases	Rate	Cases	Rate	Cases	Rate
Native American/Alaskan																		
Native	0	0.0	5	61.9	1	11.8	4	45.6	8	88.1	4	42.5	6	62.2	11	111.4	5	50.0
Asian/Pacific Islander	11	7.5	14	9.3	20	13.2	22	14.3	28	18.1	26	16.9	32	20.6	26	16.5	24	15.2
African American/Black	513	575.0	503	543.0	528	554.3	600	612.8	707	699.7	909	872.8	890	837.3	923	857.9	828	771.5
Hispanic/Latino	266	51.4	291	56.6	298	58.2	346	66.2	418	76.8	437	75.7	447	72.3	464	70.6	308	44.6
White	106	21.8	118	23.6	131	25.7	165	31.9	196	37.2	198	36.9	149	27.4	161	29.5	129	23.8

* Rate per 100,000 age- and gender-specific population

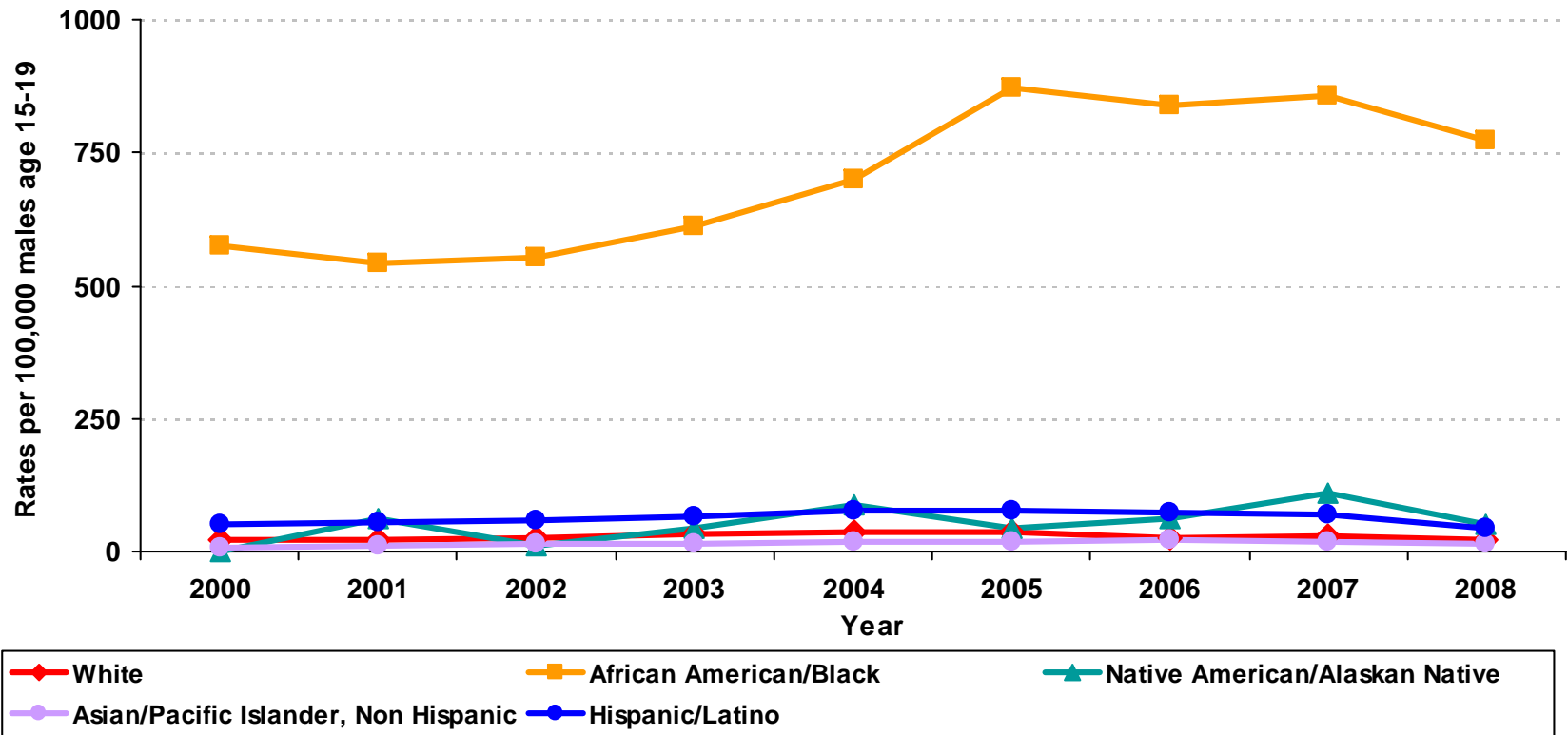
Source: California Department of Public Health, STD Control Branch
 California Department of Finance, Race/Ethnic Population with Age & Sex Detail, 2000-2050, Sacramento, CA, July 2007.
 Prepared by: California Department of Public Health, STD Control Branch, June 2010

Gonorrhea Rates for Adolescent Males by Age Group California 2000-2008



Source: California Department of Public Health, STD Control Branch
 California Department of Finance, Race/Ethnic Population with Age & Sex Detail, 2000-2050, Sacramento, CA, July 2007.
 Prepared by: California Department of Public Health, STD Control Branch, June 2010

Gonorrhea Rates for Males Age 15-19 by Race/Ethnicity California, 2000 - 2008



Source: California Department of Public Health, STD Control Branch
 California Department of Finance, Race/Ethnic Population with Age & Sex Detail, 2000-2050, Sacramento, CA, July 2007.
 Prepared by: California Department of Public Health, STD Control Branch, June 2010

P&S Syphilis Rates for Adolescent Females by Age Group California 2000-2008

P&S Syphilis Rates for Adolescent Females by Age Group, California, 2000–2008																		
Age Group	2000		2001		2002		2003		2004		2005		2006		2007		2008	
	Cases	Rate	Cases	Rate	Cases	Rate	Cases	Rate	Cases	Rate	Cases	Rate	Cases	Rate	Cases	Rate	Cases	Rate
10-14	1	0.1	0	0.0	0	0.0	2	0.1	2	0.1	0	0.0	0	0.0	0	0.0	0	0.0
15-17	1	0.1	2	0.3	2	0.3	1	0.1	3	0.4	8	1.0	8	0.9	5	0.6	4	0.5
18-19	2	0.4	4	0.8	4	0.8	6	1.2	3	0.6	4	0.8	7	1.3	12	2.2	8	1.4
15-19	3	0.3	6	0.5	6	0.5	7	0.6	6	0.5	12	0.9	15	1.1	17	1.2	12	0.8

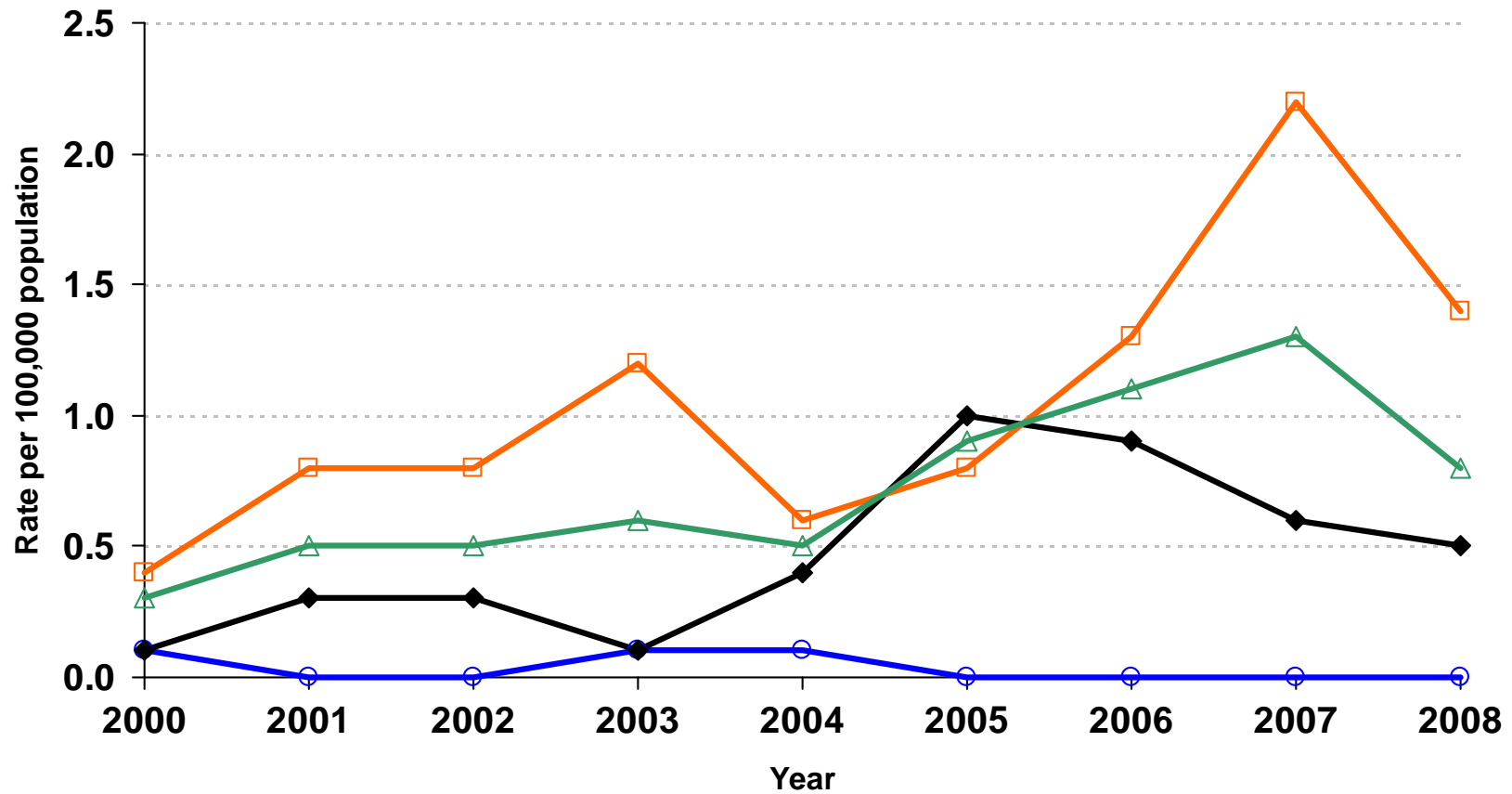
* Rate per 100,000 population

P&S Syphilis Rates by Race/Ethnicity, For Female California Residents Age 15-19, 2000- 2008																		
Race/Ethnicity	2000		2001		2002		2003		2004		2005		2006		2007		2008	
	Cases	Rate	Cases	Rate	Cases	Rate	Cases	Rate	Cases	Rate	Cases	Rate	Cases	Rate	Cases	Rate	Cases	Rate
Native American/Alaskan Native	0	0.0	0	0.0	0	0.0	0	0.0	0	0.0	0	0.0	0	0.0	0	0.0	0	0.0
Asian/Pacific Islander	0	0.0	1	0.7	1	0.7	0	0.0	0	0.0	0	0.0	0	0.0	0	0.0	0	0.0
African American/Black	1	1.2	2	2.3	1	1.1	1	1.1	2	2.1	2	2.0	6	5.9	1	1.0	3	2.9
Hispanic/Latino	1	0.2	3	0.6	3	0.6	5	1.0	4	0.8	8	1.5	8	1.4	13	2.1	6	0.9
White	1	0.2	0	0.0	1	0.2	1	0.2	0	0.0	2	0.4	1	0.2	2	0.4	2	0.4

* Rate per 100,000 age- and gender-specific population

Source: California Department of Public Health, STD Control Branch
 California Department of Finance, Race/Ethnic Population with Age & Sex Detail, 2000-2050, Sacramento, CA, July 2007.
 Prepared by: California Department of Public Health, STD Control Branch, June 2010

P&S Syphilis Rates for Adolescent Females by Age Group California, 2000–2008



○ 10-14
 ◆ 15-17
 □ 18-19
 △ 15-19

Source: California Department of Public Health, STD Control Branch

California Department of Finance, Race/Ethnic Population with Age & Sex Detail, 2000-2050, Sacramento, CA, July 2007.

Prepared by: California Department of Public Health, STD Control Branch, June 2010

P&S Syphilis Rates for Adolescent Males by Age Group California 2000-2008

P&S Syphilis Rates for Adolescent Males by Age Group California, 2000–2008																		
Age Group	2000		2001		2002		2003		2004		2005		2006		2007		2008	
	Cases	Rate	Cases	Rate	Cases	Rate	Cases	Rate	Cases	Rate	Cases	Rate	Cases	Rate	Cases	Rate	Cases	Rate
10-14	0	0.0	0	0.0	1	0.1	0	0.0	0	0.0	0	0.0	1	0.1	1	0.1	0	0.0
15-17	2	0.3	4	0.5	3	0.4	3	0.4	6	0.7	8	0.9	13	1.4	6	0.6	18	1.9
18-19	1	0.2	7	1.3	7	1.3	9	1.7	8	1.5	13	2.4	22	3.9	38	6.4	44	7.1
15-19	3	0.2	11	0.8	10	0.8	12	0.9	14	1.0	21	1.5	35	2.4	44	2.9	62	4.0

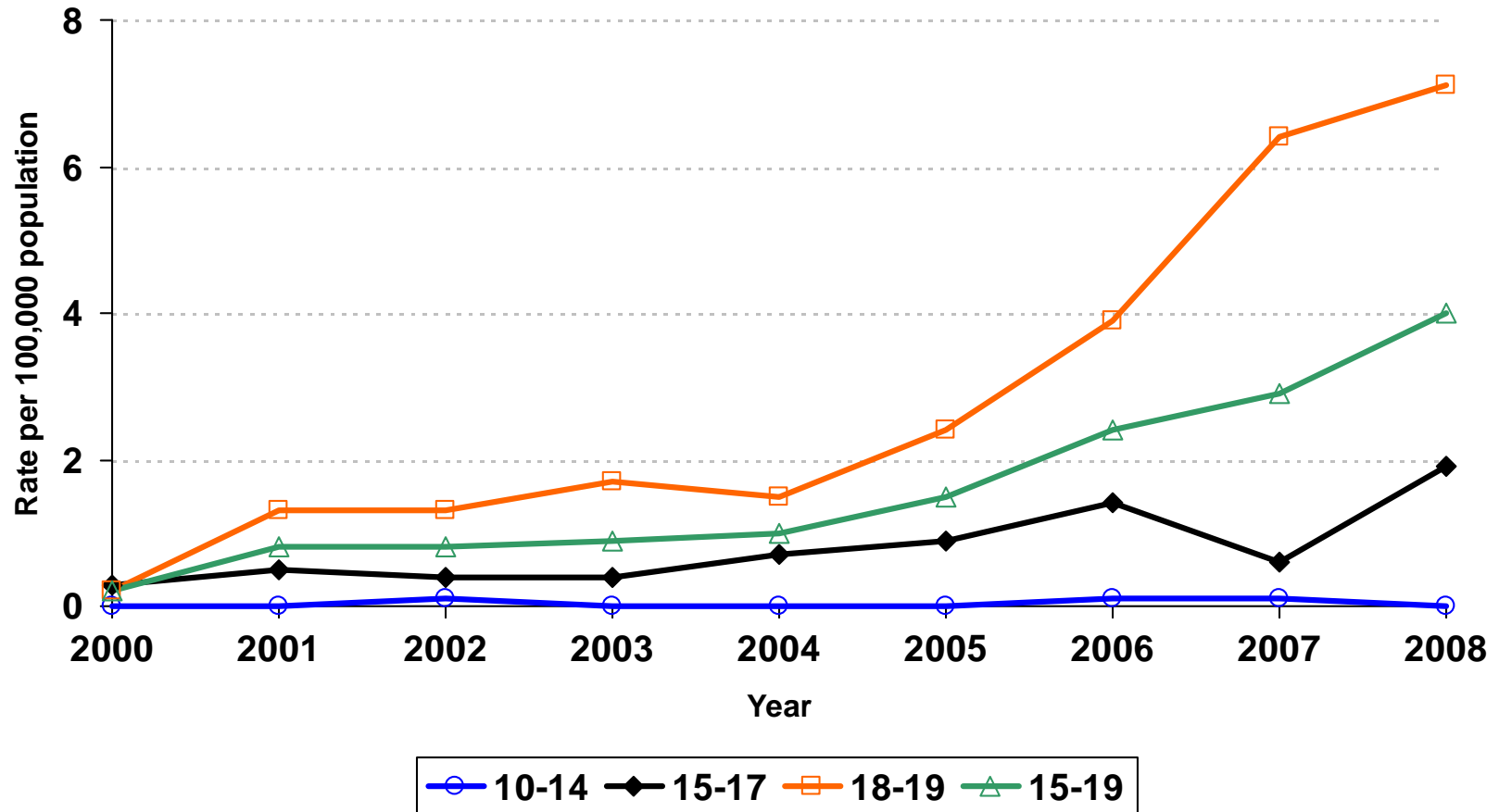
* Rate per 100,000 population

P&S Syphilis Rates by Race/Ethnicity, For Male California Residents Age 15-19, 2000- 2008																		
Race/Ethnicity	2000		2001		2002		2003		2004		2005		2006		2007		2008	
	Cases	Rate	Cases	Rate	Cases	Rate	Cases	Rate	Cases	Rate	Cases	Rate	Cases	Rate	Cases	Rate	Cases	Rate
Native American/Alaskan																		
Native	0	0.0	0	0.0	0	0.0	0	0.0	0	0.0	0	0.0	0	0.0	1	10.1	0	0.0
Asian/Pacific Islander	0	0.0	0	0.0	1	0.7	0	0.0	2	1.3	0	0.0	0	0.0	0	0.0	3	1.9
African American/Black	0	0.0	1	1.1	1	1.0	3	3.1	2	2.0	4	3.8	14	13.2	15	13.9	17	15.8
Hispanic/Latino	3	0.6	9	1.8	7	1.4	9	1.7	9	1.7	8	1.4	12	1.9	20	3.0	33	4.8
White	0	0.0	1	0.2	1	0.2	0	0.0	1	0.2	9	1.7	6	1.1	9	1.6	7	1.3

* Rate per 100,000 age- and gender-specific population

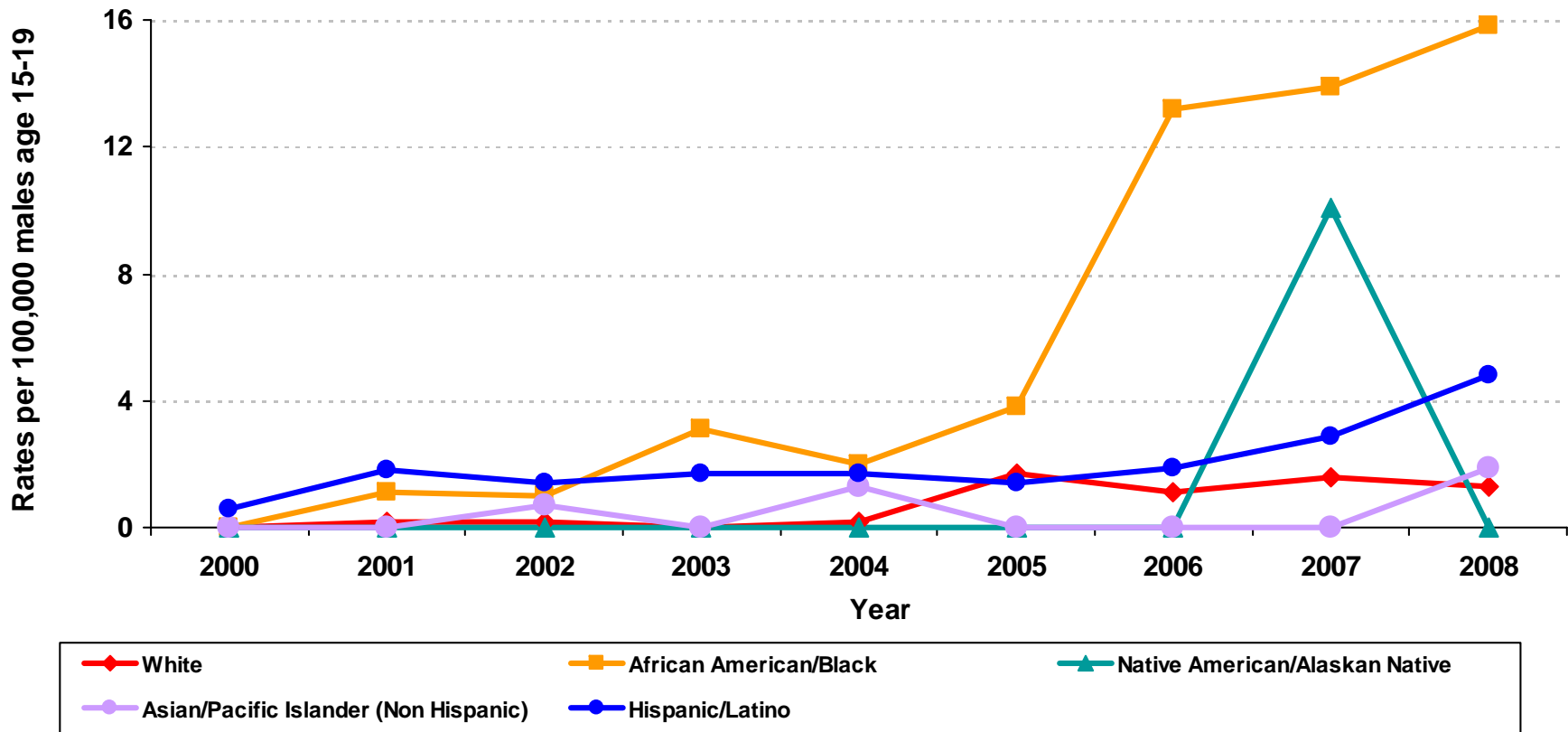
Source: California Department of Public Health, STD Control Branch
 California Department of Finance, Race/Ethnic Population with Age & Sex Detail, 2000-2050, Sacramento, CA, July 2007.
 Prepared by: California Department of Public Health, STD Control Branch, June 2010

P&S Syphilis Rates for Adolescent Males by Age Group California, 2000–2008



Source: California Department of Public Health, STD Control Branch
California Department of Finance, Race/Ethnic Population with Age & Sex Detail, 2000-2050, Sacramento, CA, July 2007.
Prepared by: California Department of Public Health, STD Control Branch, June 2010

P&S Syphilis Rates for Males Age 15-19 by Race/Ethnicity California, 2000 - 2008



Source: California Department of Public Health, STD Control Branch
 California Department of Finance, Race/Ethnic Population with Age & Sex Detail, 2000-2050, Sacramento, CA, July 2007.
 Prepared by: California Department of Public Health, STD Control Branch, June 2010

Chlamydia Prevalence Monitoring for Adolescent Females by Age Group California, 2000-2008

Chlamydia Prevalence Monitoring – Family Planning Clinics, Percent Positive for Adolescent Females by Age Group, California, 2000–2008

Age Group	2000	2001	2002	2003	2004	2005	2006	2007	2008
10-14	15.5	8.7	8.6	6.0	7.4	6.6	8.5	4.5	7.8
15-17	9.2	8.2	7.4	6.4	7.3	7.0	8.2	7.2	6.2
18-19	8.4	7.9	6.5	6.5	7.9	6.9	7.8	7.4	7.7
15-19	8.8	8.0	6.9	6.5	7.6	6.9	8.0	7.3	7.1

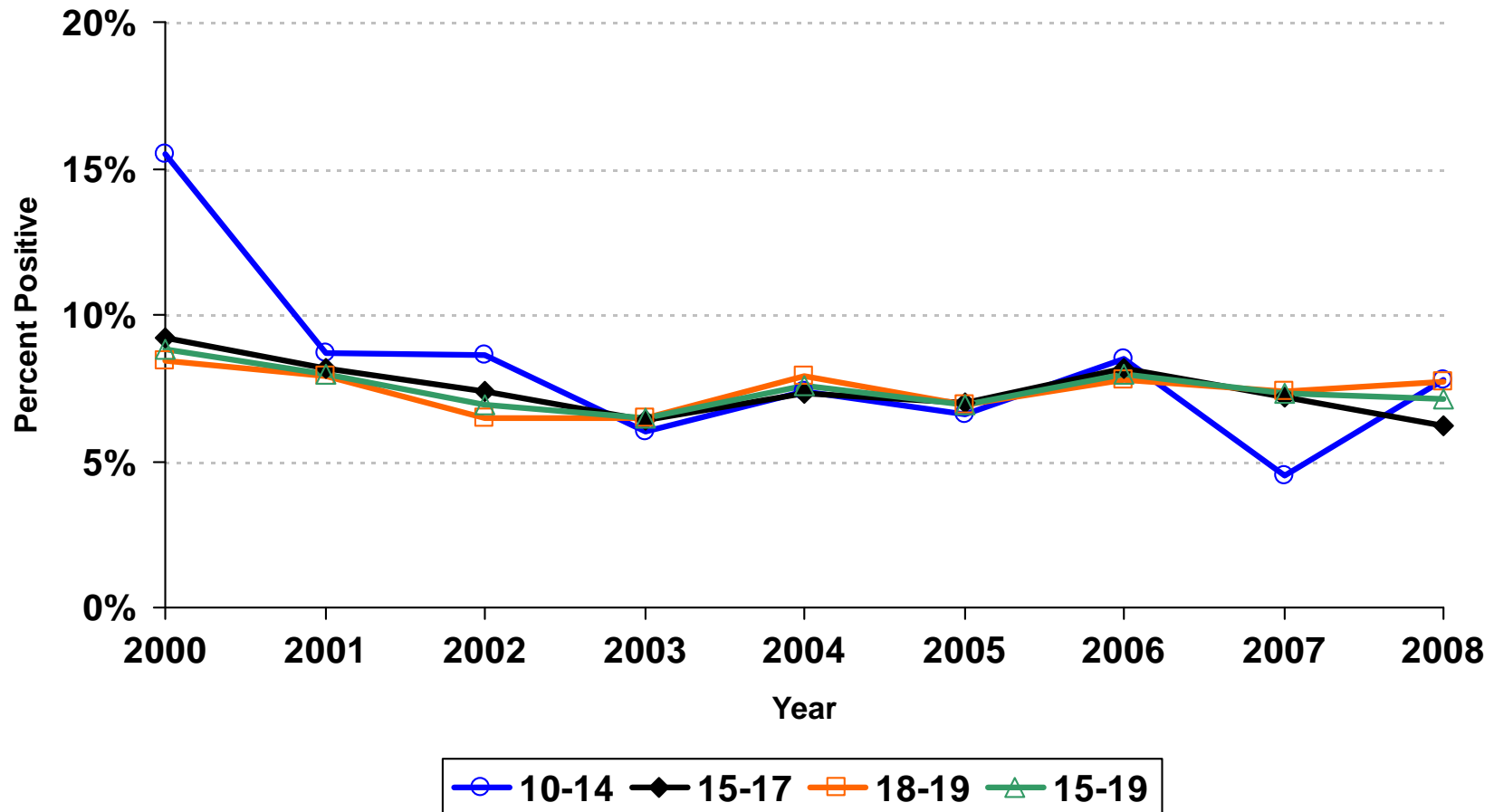
Chlamydia Prevalence Monitoring – STD Clinics, Percent Positive for Adolescent Females by Age Group, California, 2000–2008

Age Group	2000	2001	2002	2003	2004	2005	2006	2007	2008
10-14	21.5	13.3	25.3	21.9	20.0	24.7	32.0	27.5	28.9
15-17	26.0	22.5	22.6	29.9	22.1	27.0	28.1	28.4	29.4
18-19	19.1	21.5	21.5	22.1	23.3	23.8	23.3	25.0	22.8
15-19	22.1	21.9	22.0	25.3	22.9	25.0	25.1	26.2	25.1

Source: California Department of Public Health, STD Control Branch; Los Angeles Infertility Prevention Project;
and San Francisco Infertility Prevention Project

Prepared by: California Department of Public Health, STD Control Branch, June 2010

Chlamydia Prevalence Monitoring – Family Planning Clinics Percent Positive for Adolescent Females by Age Group California, 2000–2008

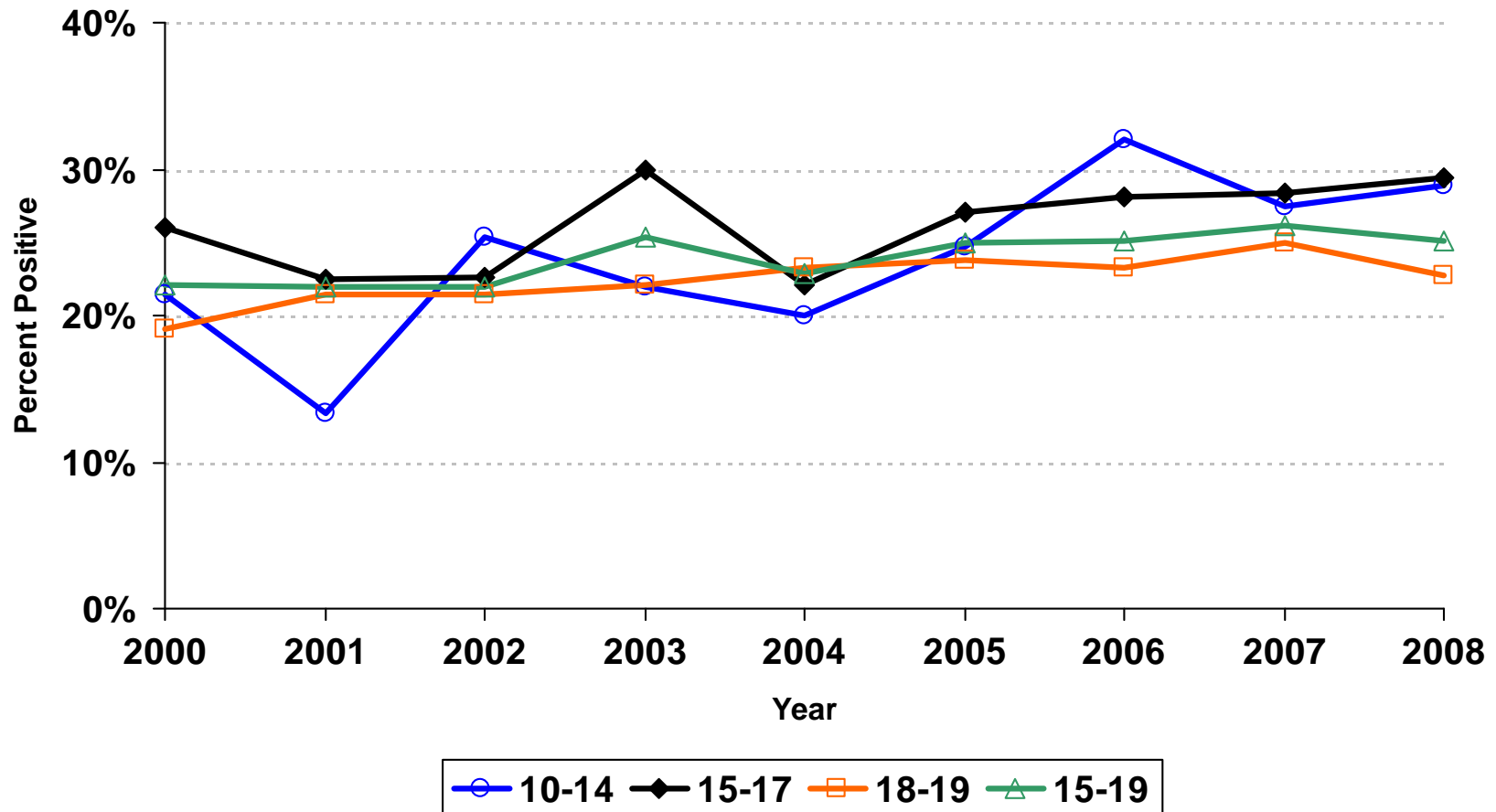


Source: California Department of Public Health, STD Control Branch; Los Angeles Infertility Prevention Project; and San Francisco Infertility Prevention Project

Prepared by: California Department of Public Health, STD Control Branch, June 2010

ASHWG Data Integration Subcommittee – July 2010

Chlamydia Prevalence Monitoring – STD Clinics Percent Positive for Adolescent Females by Age Group California, 2000–2008



Source: California Department of Public Health, STD Control Branch; Los Angeles Infertility Prevention Project; and San Francisco Infertility Prevention Project

Prepared by: California Department of Public Health, STD Control Branch, June 2010

ASHWG Data Integration Subcommittee – July 2010

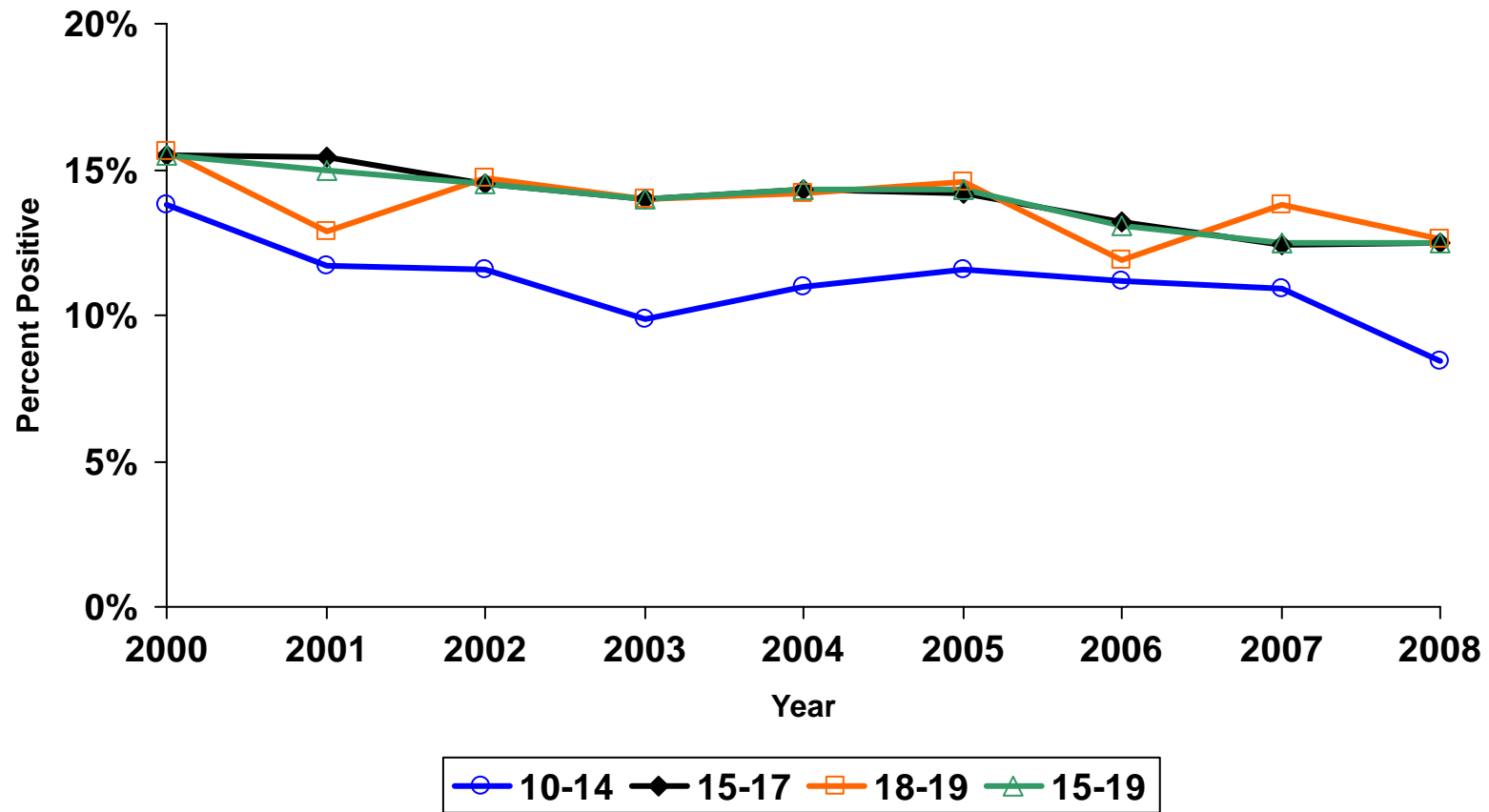
Chlamydia Prevalence Monitoring for Adolescent Females by Age Group California, 2000-2008

Chlamydia Prevalence Monitoring – Juvenile Detention, Percent Positive for Adolescent Females by Age Group, California, 2000–2008									
Age Group	2000	2001	2002	2003	2004	2005	2006	2007	2008
10-14	13.8	11.7	11.6	9.9	11.0	11.6	11.2	10.9	8.4
15-17	15.5	15.4	14.5	14.0	14.3	14.2	13.2	12.4	12.5
18-19	15.6	12.9	14.7	14.0	14.2	14.6	11.9	13.8	12.6
15-19	15.5	15.0	14.5	14.0	14.3	14.3	13.1	12.5	12.5

Chlamydia Prevalence Monitoring – Northern CA MCO, Percent Positive for Adolescent Females by Age Group, California, 2000–2008									
Age Group	2000	2001	2002	2003	2004	2005	2006	2007	2008
10-14	6.3	6.5	5.1	4.3	4.8	3.5	4.5	4.6	4.2
15-17	5.8	5.9	5.3	6.2	4.5	4.4	5.3	5.4	5.1
18-19	5.1	5.3	5.1	4.9	4.8	4.6	6.9	6.9	7.1
15-19	5.4	5.6	5.2	5.5	4.6	4.5	6.1	6.1	6.1

Source: California Department of Public Health, STD Control Branch; Los Angeles Infertility Prevention Project; San Francisco Infertility Prevention Project; and Northern California Managed Care Organization (MCO)
Prepared by: California Department of Public Health, STD Control Branch, June 2010

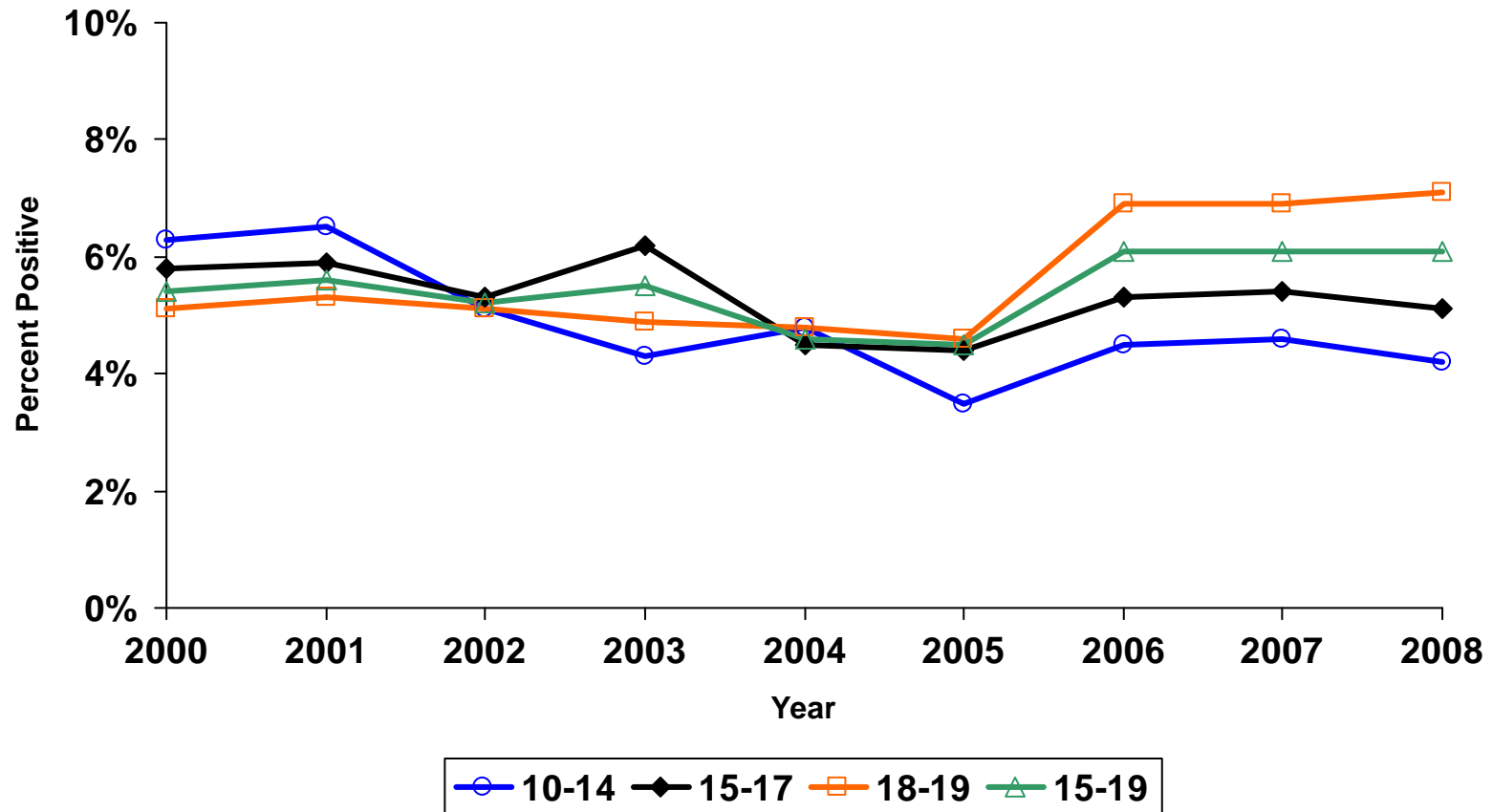
Chlamydia Prevalence Monitoring – Juvenile Detention Percent Positive for Adolescent Females by Age Group California, 2000–2008



Source: California Department of Public Health, STD Control Branch; Los Angeles Infertility Prevention Project; and San Francisco Infertility Prevention Project

Prepared by: California Department of Public Health, STD Control Branch, June 2010

Chlamydia Prevalence Monitoring – Northern CA MCO Percent Positive for Adolescent Females by Age Group California, 2000–2008



Source: California Department of Public Health, STD Control Branch; Northern California Managed Care Organization (MCO)
Prepared by: California Department of Public Health, STD Control Branch