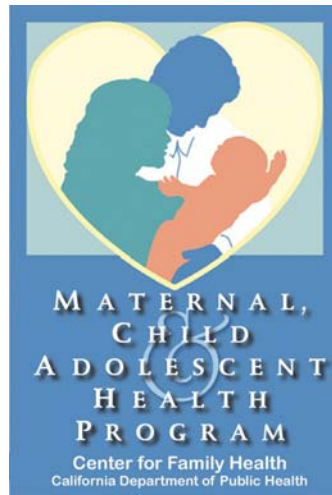


CALIFORNIA ADOLESCENT HEALTH PROGRESS REPORT 2010



National Adolescent Health Information Center



Prepared by:

California Adolescent Health Collaborative

Maternal, Child and Adolescent Health, Center for Family Health, California
Department of Public Health

National Adolescent Health Information and Innovation Center, UCSF

Overview

California Adolescent Health Collaborative (CAHC) and its partners have been producing Adolescent Health Report Cards since 2003. As a rule, many of the indicators were selected from the HP 2010 21 Critical Objectives. Over time, the data available for adolescent health has expanded in some areas and diminished in others. Our goal has always been to provide clear information in a compelling format. To that end, we have re-named the original report from the “Adolescent Health Report Card” to the “Adolescent Health Progress Report” to reflect what this report displays: trends in the status of critical adolescent health objectives.

This compilation of data presents a state-level, multi-year “Progress Report” on the health of adolescents and young adults in California. Designed for providers, policy makers, community leaders, educators, and advocates, this report can be used to demonstrate areas of need by such aspects as race/ethnicity, gender, and age, show trends in the health of California’s youth, and provide sources for further information.

Health Indicators

The majority of indicators in this Progress Report were selected to reflect those measured by Healthy People 2010’s 21 Critical Health Objectives for Adolescents and Young Adults. In addition, we present data available about resilience and health behaviors in an effort to broaden the base of information taken into consideration when assessing the health status for California’s teens.

Limitations

As a presentation of data, this report is limited to data that currently exist about adolescents in California. There are eight main sources of data used, which vary in the years of data available, the age ranges represented, and the methods of collection. In addition, there can be a long delay between when data is collected and when it becomes publicly available. Some important health indicators that are lacking from the available data include measures of oral health in adolescents, mental health access, immunizations, data on adolescents with special needs, and the impact of the environment on health. Data on subpopulations of teens such as those in foster care, not in school, LGBTIQ, and homeless are also severely lacking. Despite these limitations, the information available presents useful and persuasive “stories” about California’s teens.

How to Use This Report

The data we present are not altered or in any way interpreted; the contents represent all original data. The graphical representations of the data in this document illustrate trends across time. A numbered appendix at the end of the report includes the sources of the data, notes about the data from their original sources, and the numbers used to construct the graphs. We encourage you to consult the sources listed and use them for further investigation.

Results

Data on resilience have been an ongoing element of this report, as research has documented a relationship between positive results in these measures and improved health outcomes.¹ In general, the percentage of youth reporting that they have high levels of supportive relationships and opportunities in their communities, schools and home environments stays constant or improves from 7th grade to 11th grade as well as over the years cited in this report. This is an important change, in contrast to decreases documented in the data incorporated into the California Strategic Plan, 2001², where youth were shown to decrease in their sense of connectivity between 7th and 11th grades.

The data are variable regarding teen health behaviors. Many behavioral indicators remained constant; this is the case for the proportion of adolescents reporting sad and hopeless feelings and tobacco use. Reports of other risky behaviors such as binge drinking and physical fighting in past 12 months increased. A few behavioral data are trending in a positive direction, including improved consistency of seat belt use and increased levels of vigorous physical activity. These data are consistent with the national review of mid-decade progress on the 21 Critical Health Objectives.^{3, 4}

Morbidity and mortality measures among California's youth all show decreases from 2006 to 2007, and the data are generally improving over the last decade. Specific areas of improvement include decreased numbers of suicide attempts and fatalities, as well as decreased prevalence of overweight and obesity.

Sexual Health data indicates some significant improvement as well as cause for concern. Birth rates have consistently declined for girls 15-19 since 2000. In contrast, rates of Chlamydia and HIV among young people have increased. The reasons for these increases are multifactorial and include improved access to and increased rates of screening to identify asymptomatic infections and improved case reporting.

By focusing on indicators selected by HP 2010 as critical to the knowledge base on teen health, and providing longitudinal information for a multi-year context, it is our intent to provide California's adolescent health advocates with engaging and easy-to-access information to inform and inspire their work. CAHC staff is available for additional technical assistance; please contact us with any additional questions or comments on this Progress Report.

¹ Benard B. (2004) *Resiliency: what we have learned*. San Francisco, CA: West Ed

² Clayton SL, Brindis CD, Hamor JA, Raden-Wright H, Fong C. (2000). *Investing in Adolescent Health: A Social Imperative for California's Future*. San Francisco, CA: University of California, San Francisco. National Adolescent Health Information Center.

³ Park, M. J., Brindis, C. D., Chang, F., & Irwin, C. E., Jr. (2008). A Midcourse Review of the Healthy People 2010: 21 Critical Health Objectives for Adolescents and Young Adults. *Journal of Adolescent Health*, 42(4), 329-334.

⁴ The Data Project <http://nahic.ucsf.edu/index.php/dataproject/>

How to Contact CAHC

CAHC is located at 555 12th Street, 10th floor, Oakland, CA 94607. We can also be reached via phone at (510) 285-5712 or email at info@californiateenhealth.org. For more information, visit <http://www.californiateenhealth.org>.

Funders

This report was supported in part by grants from the Maternal, Child and Adolescent Health (MCAH) Program, California Department of Public Health, and the Maternal and Child Health Bureau, Health Resources and Services Administration, the United States Department of Health and Human Services (U45MC 00002 and U45MC 00023).

Suggested Citation

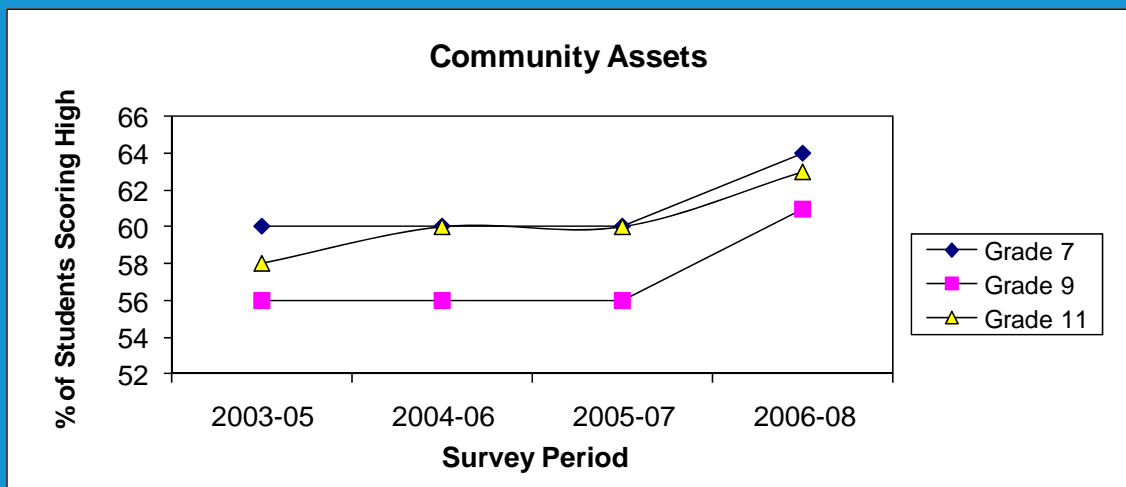
Kirkpatrick RL, Newlan S, Brindis CD, (2010). *California Adolescent Health Progress Report 2010*. Oakland, CA: California Adolescent Health Collaborative.

RESILIENCY AND HEALTHY DEVELOPMENT

1. Increase the proportion of youth who have supportive relationships and opportunities in the Community Environment (Community Assets).



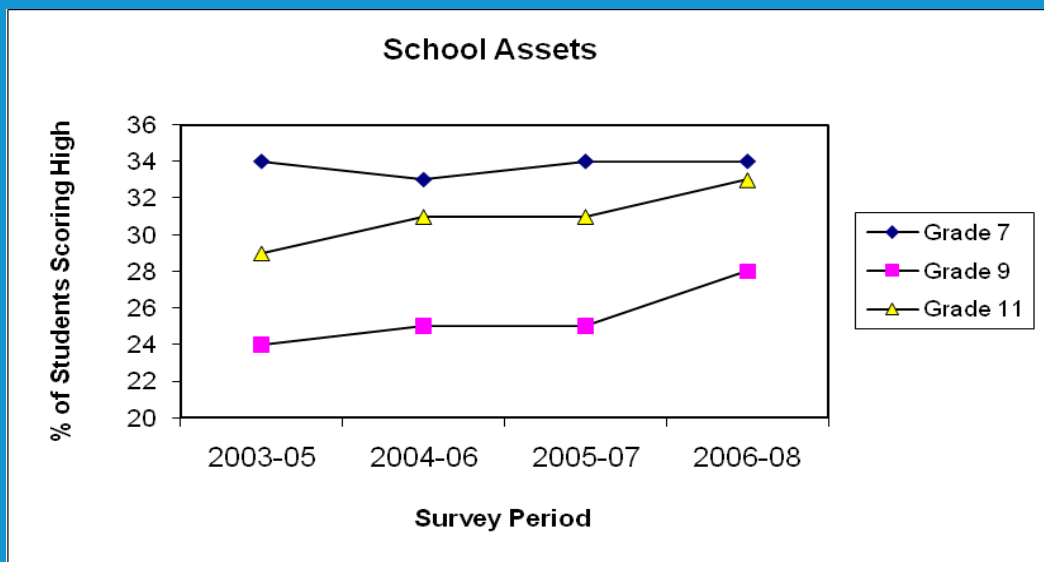
GOAL



2. Increase the proportion of youth who have supportive relationships and opportunities in the school environment (School Assets).



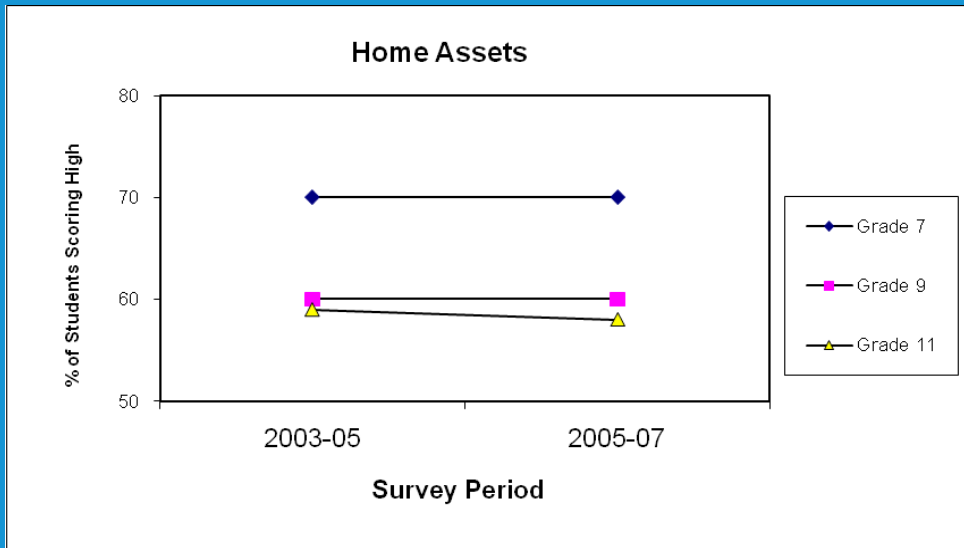
GOAL



3. Increase the proportion of youth who have supportive relationships and opportunities at home (Home Assets).



GOAL

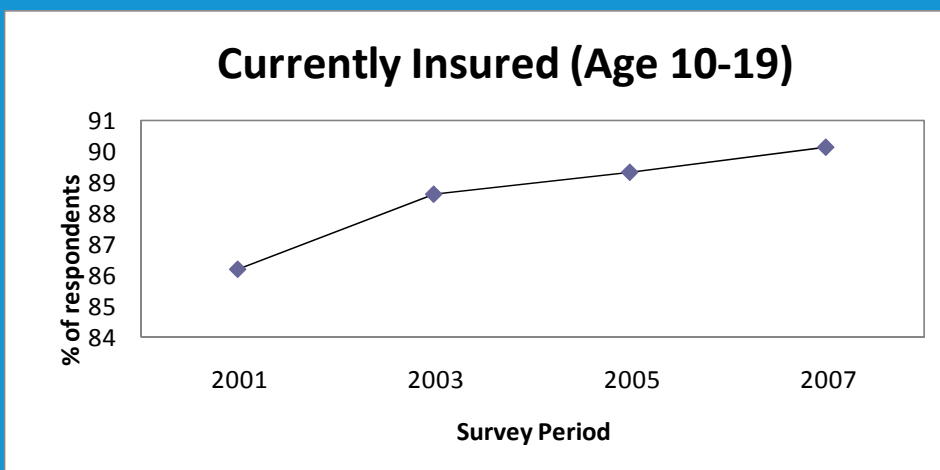


HEALTHCARE ACCESS

4. Increase the percentage of teens (10-19) with health insurance.

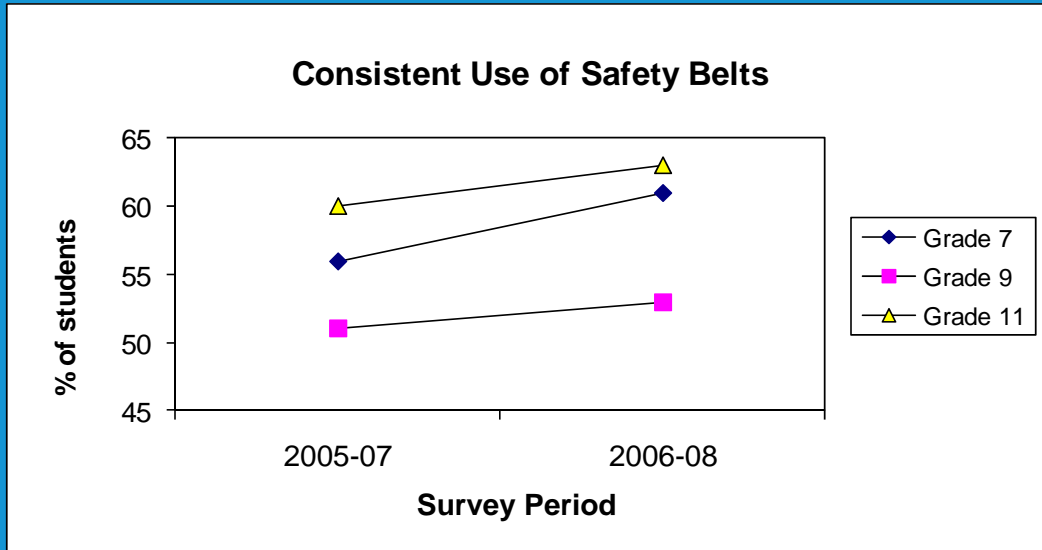


GOAL

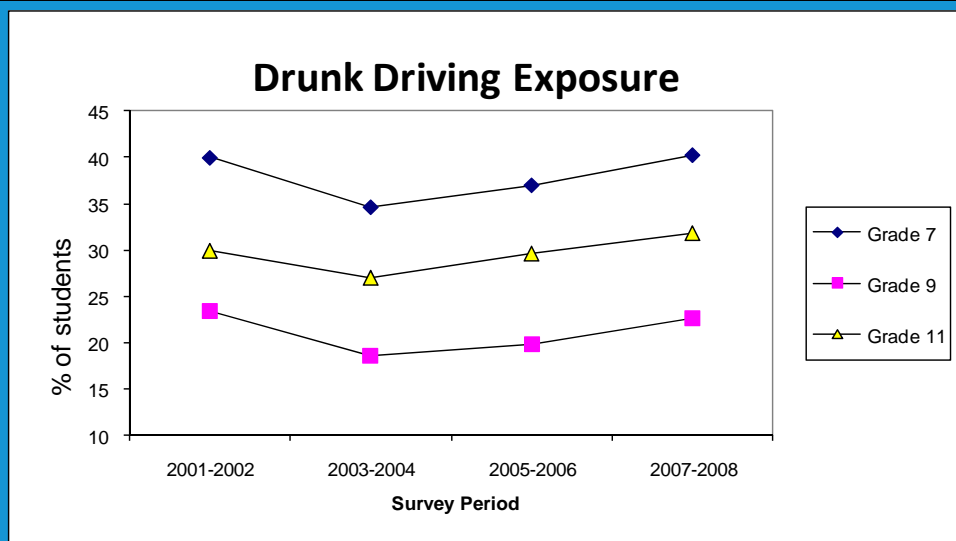


HEALTH BEHAVIORS

5. Increase use of safety belts.



6. Reduce the proportion of young people who report that they have ever ridden in a car when the driver had been drinking alcohol, or driven a car when they had been drinking alcohol (Drunk Driving Exposure).

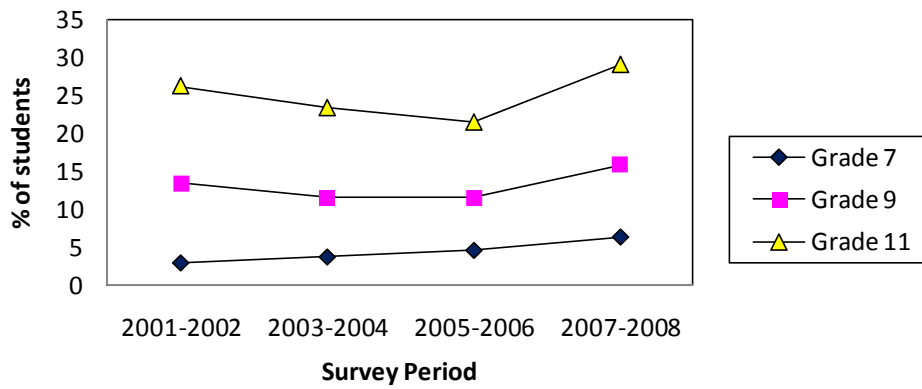


7. Reduce the proportion of adolescents engaging in binge drinking of alcoholic beverages.



GOAL

Binge Drinking (Past 30 days)

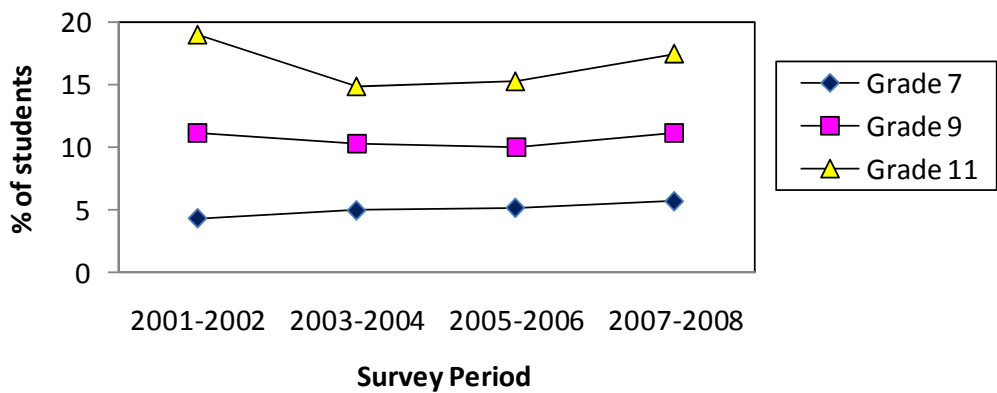


8. Reduce tobacco use among adolescents.



GOAL

Tobacco Use (Past 30 days)

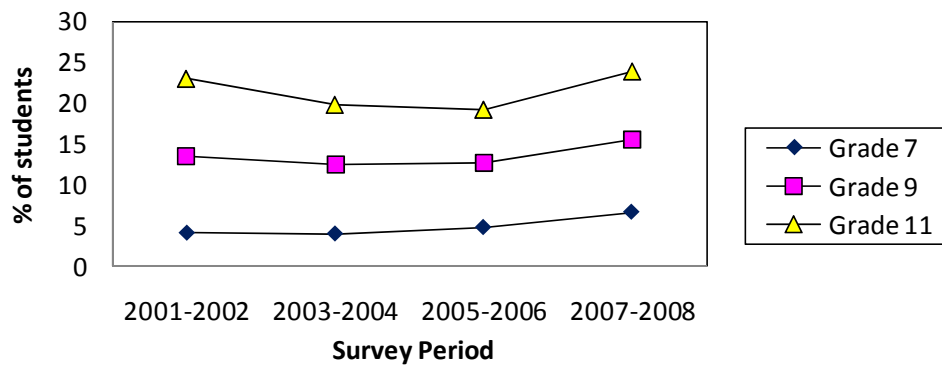


9. Reduce the proportion of youth reporting use of marijuana during the past 30 days.



GOAL

Marijuana Use (Past 30 Days)

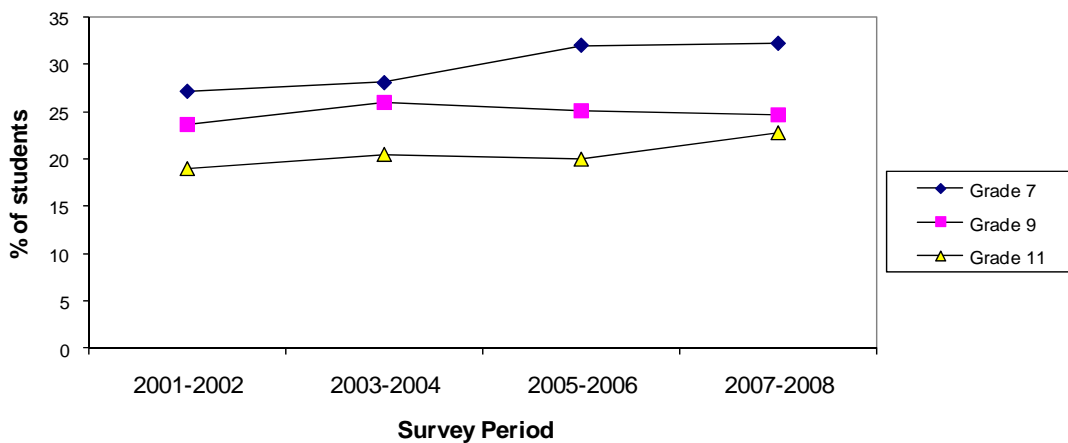


10. Reduce physical fighting among adolescents.



GOAL

Physical Fighting in Past 12 Months

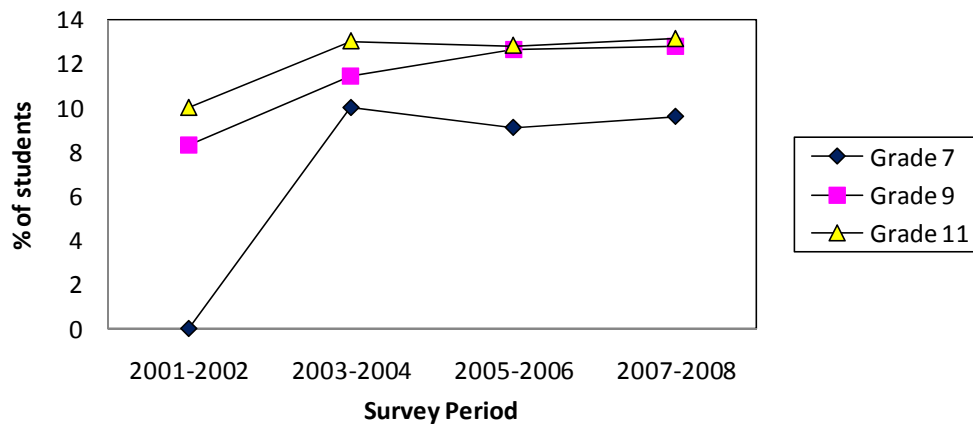


11. Reduce weapon carrying by adolescents.



GOAL

Weapon Carrying in Past 12 Months

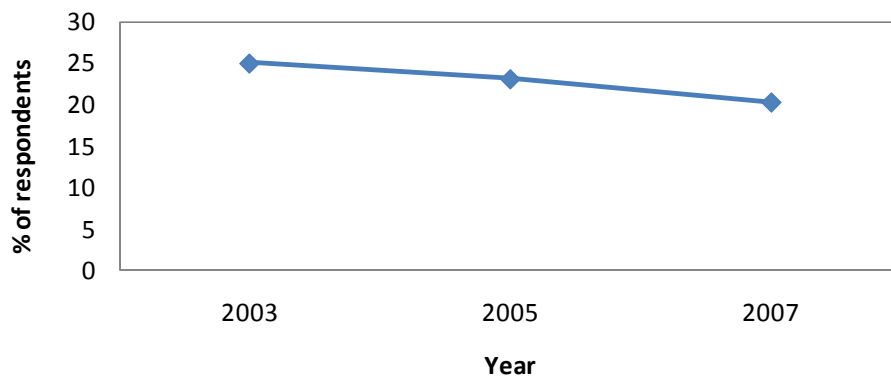


12. Increase the proportion of young persons who eat five or more servings of fruits and vegetables daily.



GOAL

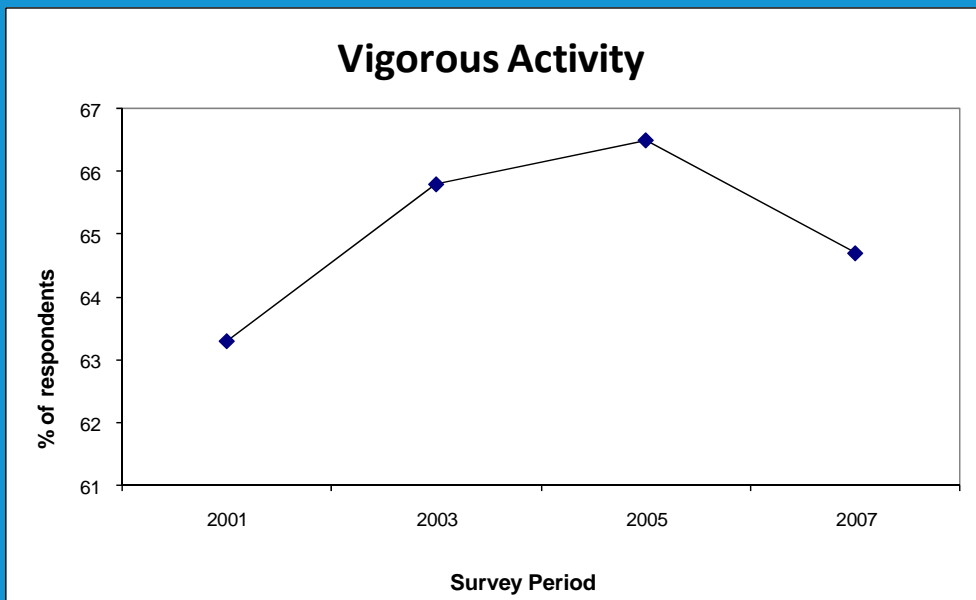
Five-a-day



13. Increase the proportion of young persons who engage in vigorous physical activity that promotes cardio-respiratory fitness 3 or more days per week for 60 minutes or more per occasion.



GOAL

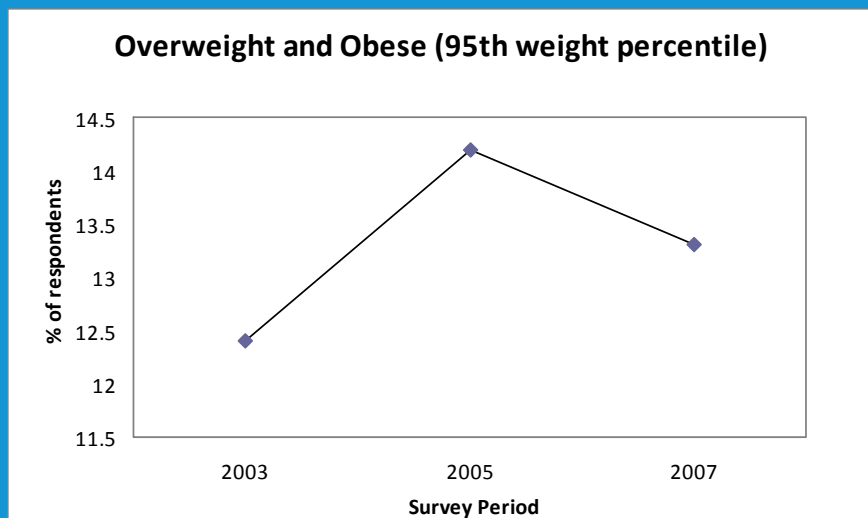


MORBIDITY AND MORTALITY

14. Reduce the proportion of adolescents who are overweight or obese.



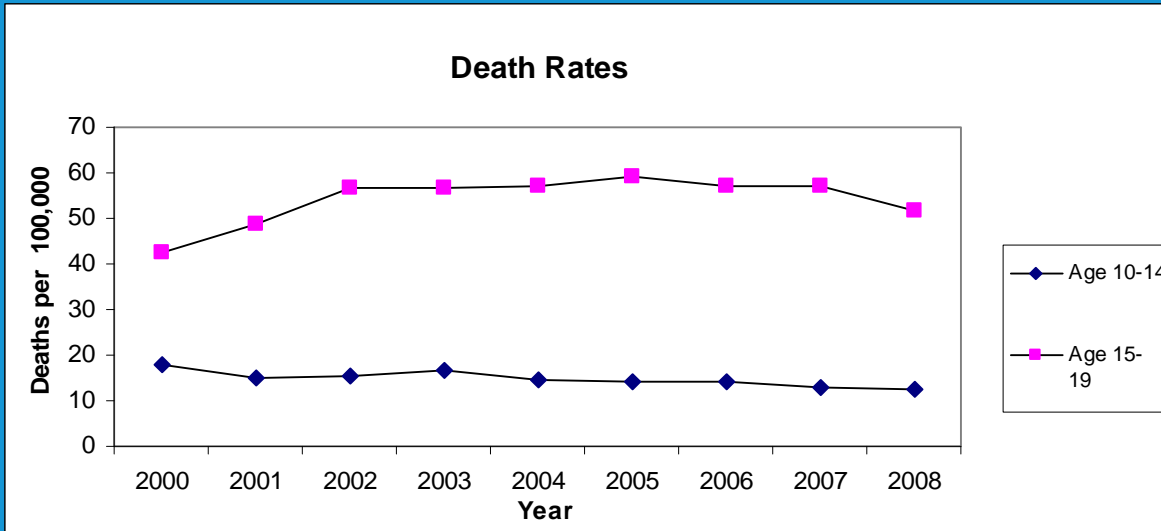
GOAL



15. Reduce the rate of deaths of adolescents and young adults (10-19).



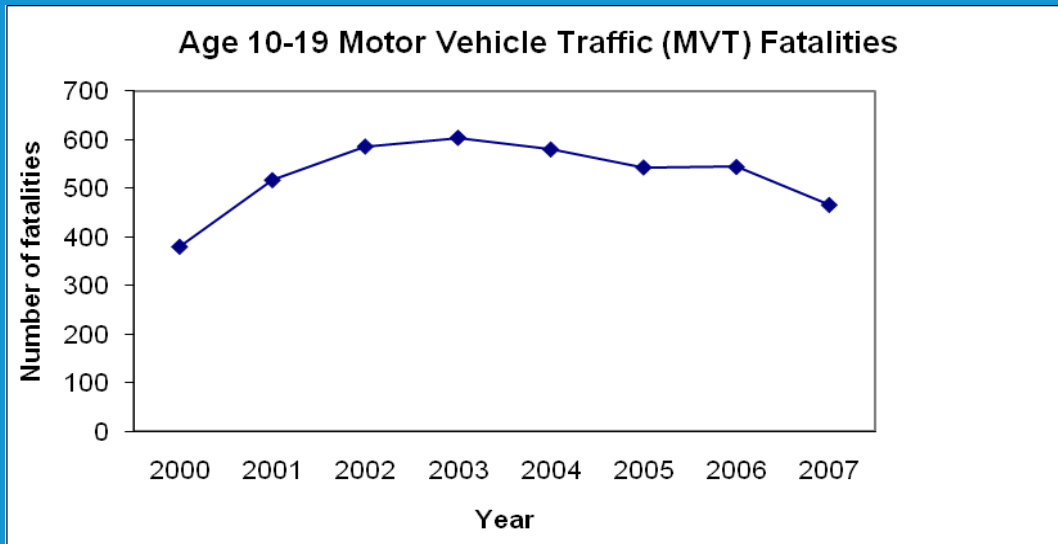
GOAL



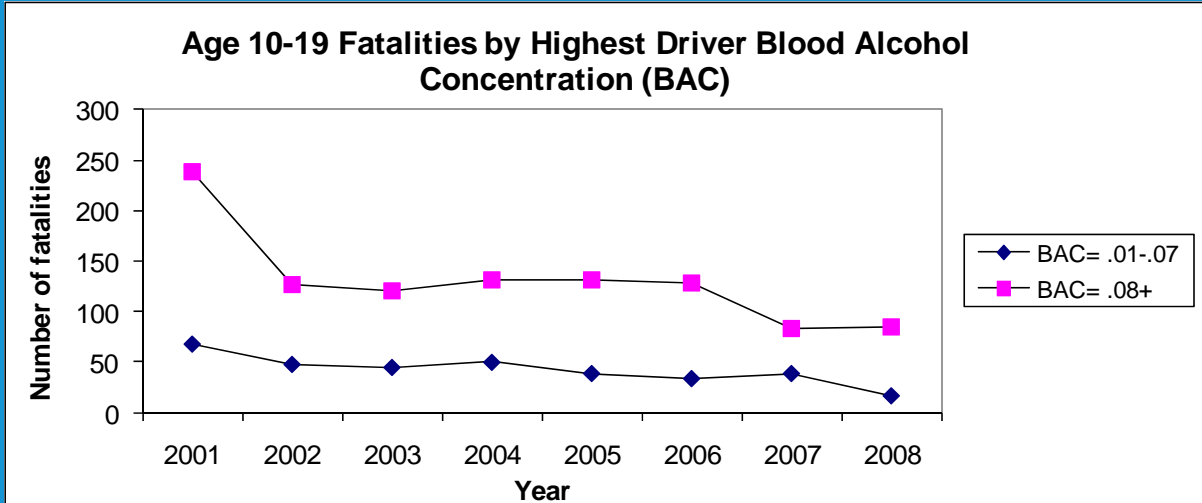
16. Reduce deaths caused by motor vehicle crashes among adolescents ages 10-19.



GOAL

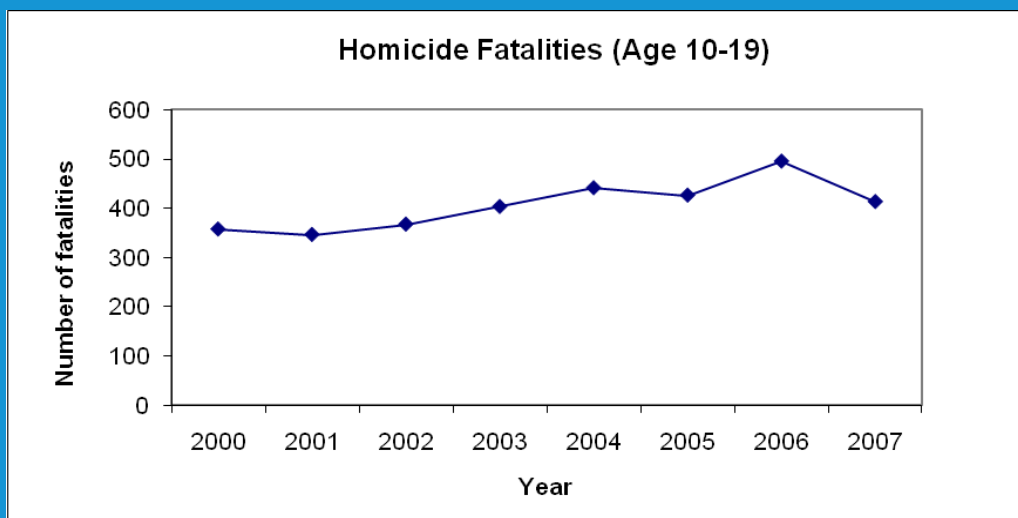


17. Reduce deaths and injuries caused by alcohol- and drug-related motor vehicle crashes.



Blood Alcohol Concentration: The BAC Is Measured As A Percentage By Weight Of Alcohol In The Blood (grams/deciliter). A Positive BAC Level (0.01 G/dl And Higher) Indicates That Alcohol Was Consumed By The Person Tested. A BAC Level Of 0.10 G/dl Or More Indicates That The Person Was Intoxicated.

18. Reduce homicides among adolescents ages 10-19.

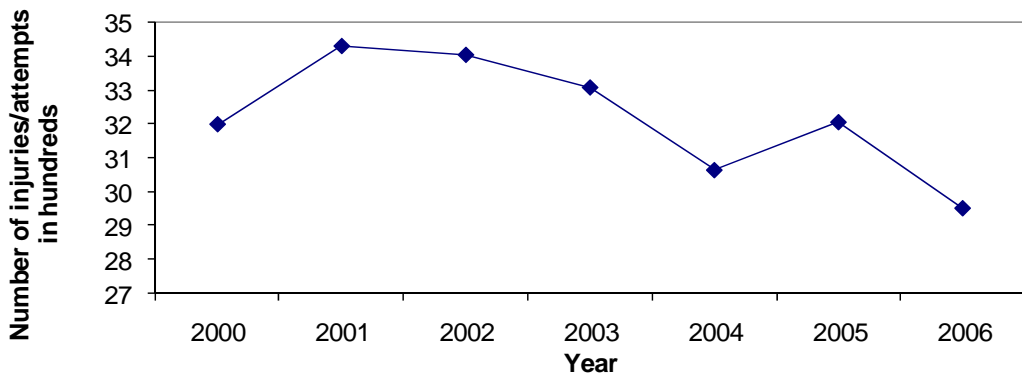


19. Reduce youth suicide attempts per year.



GOAL

Self-Inflicted Injuries/ Suicide Attempts (Age 10-19)

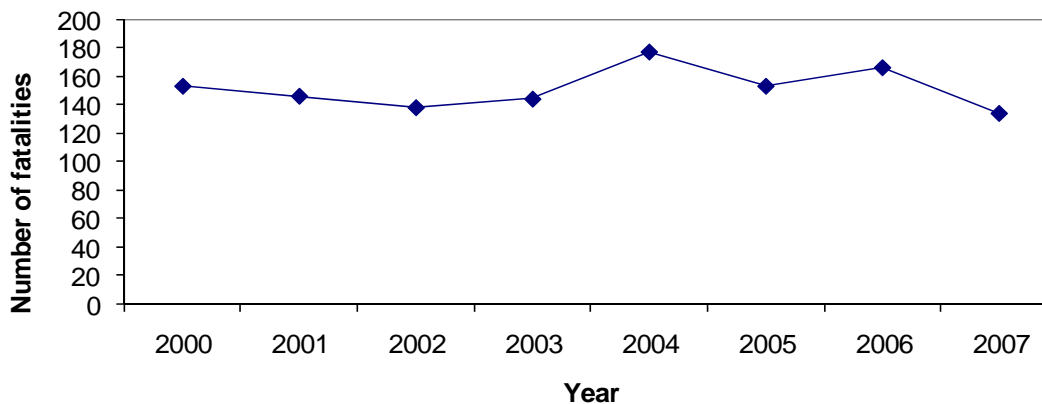


20. Reduce youth suicides per year.



GOAL

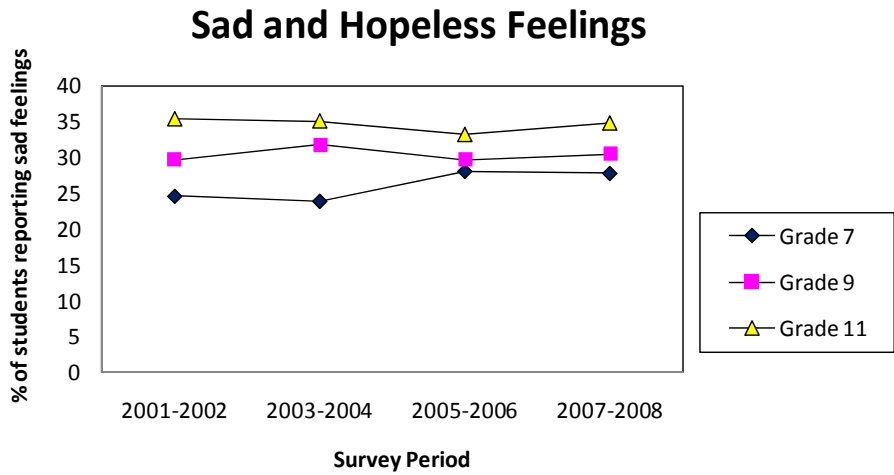
Suicide Fatalities (Age 10-19)



21. Reduce the proportion of adolescents reporting feelings of Incapacitation, Sadness and Hopelessness.



GOAL

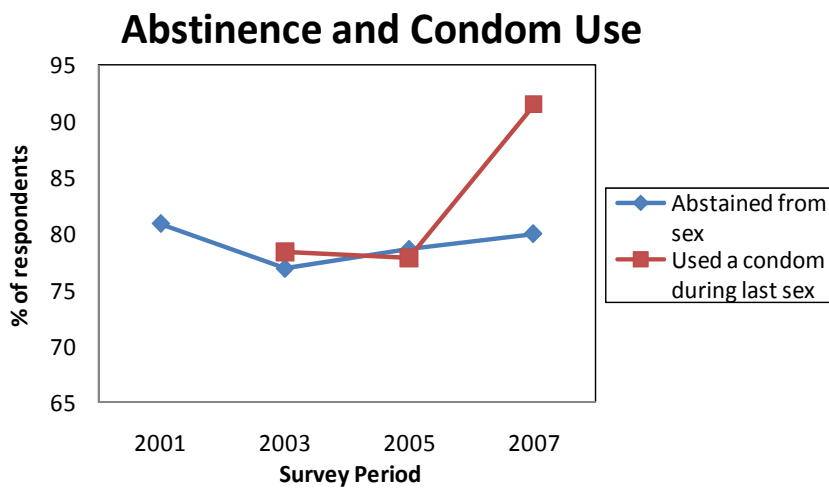


SEXUAL AND REPRODUCTIVE HEALTH

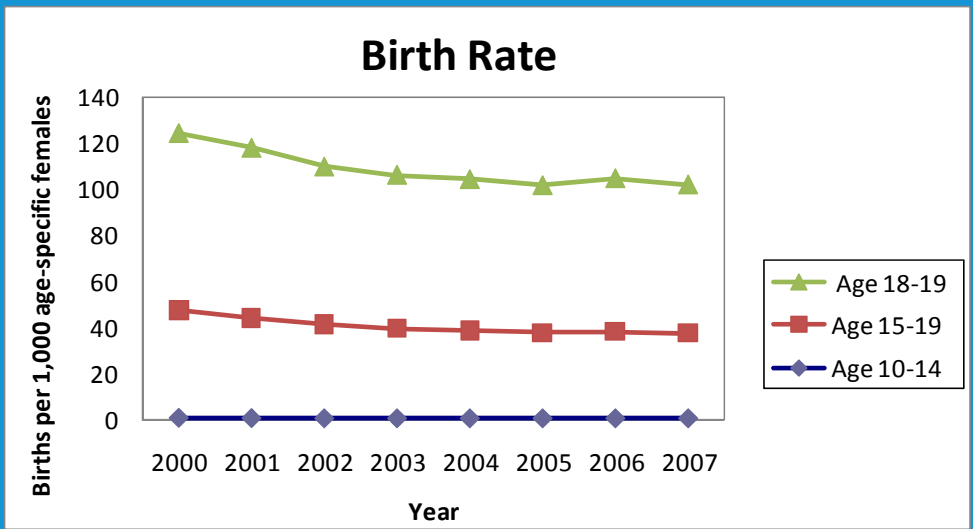
22. Increase the proportion of adolescents who abstain from sexual intercourse or use condoms if currently sexually active.



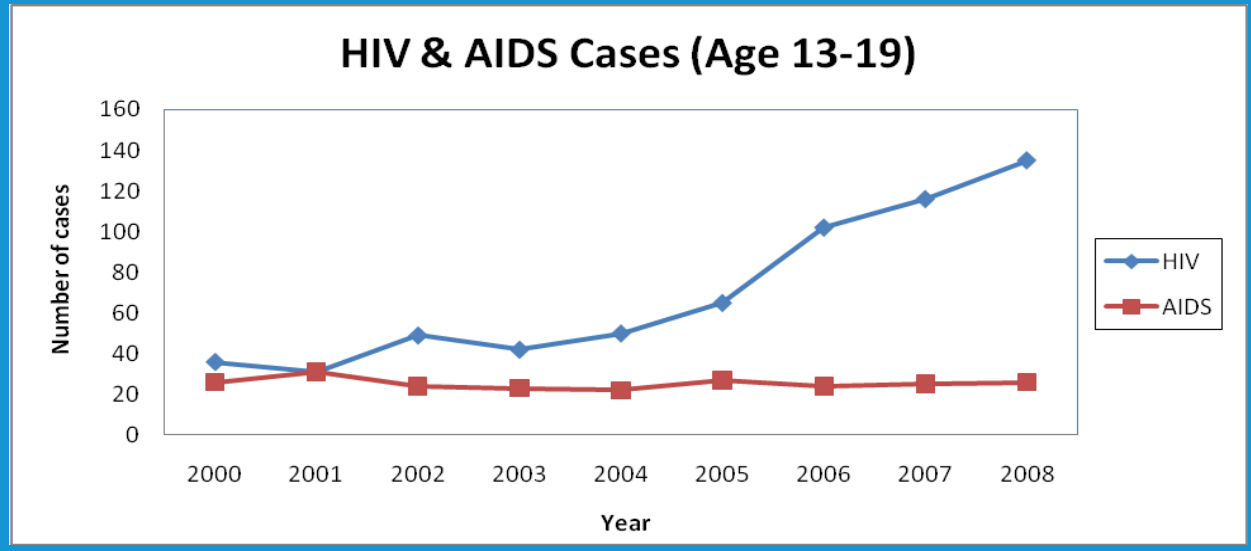
GOAL



23. Reduce the birth rate of females ages 10-19 years.



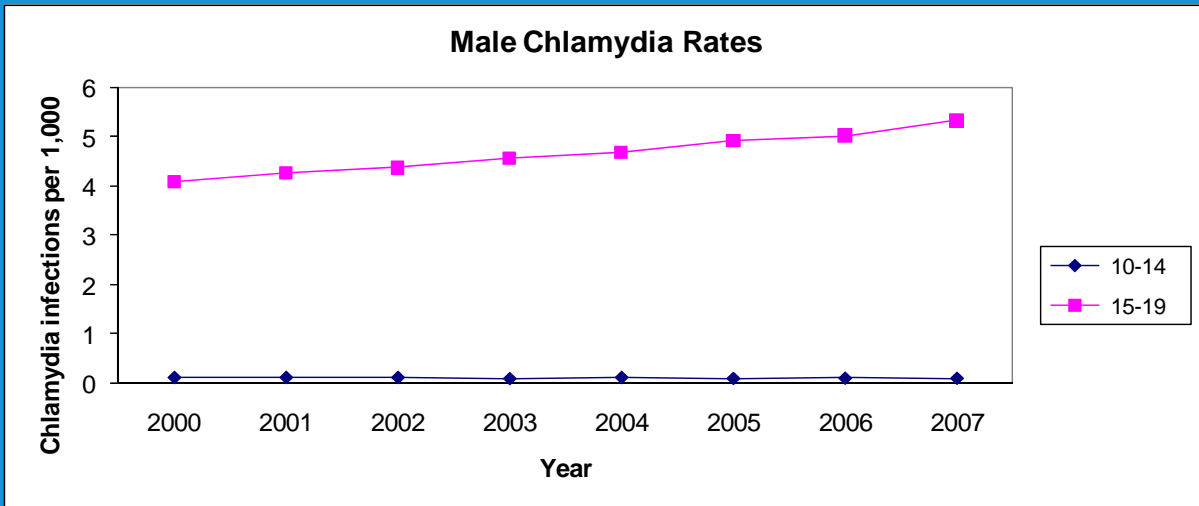
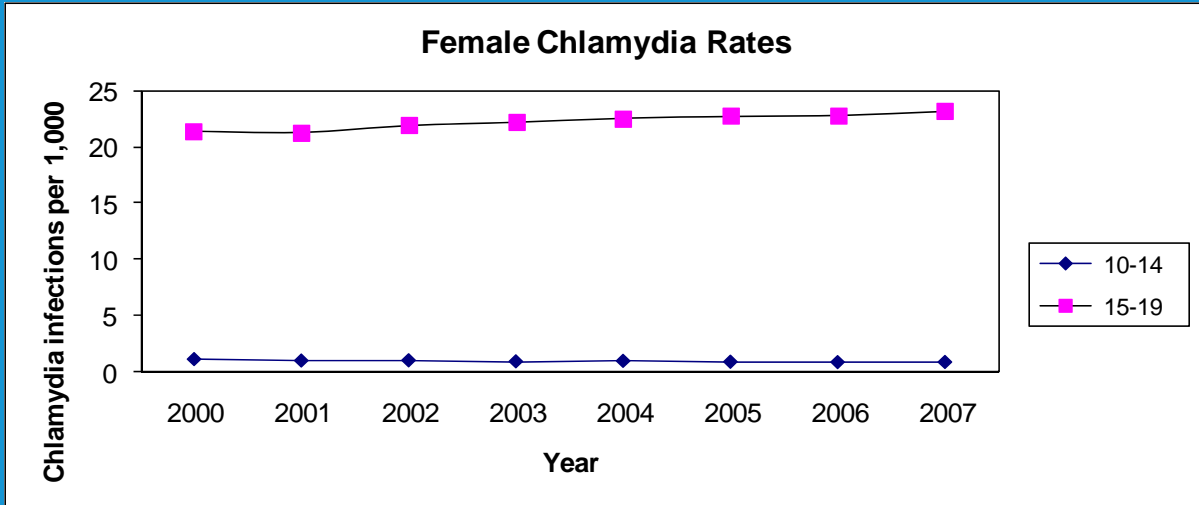
24. Reduce the number of cases of HIV and AIDS among adolescents and young adults.



25. Reduce the proportion of young persons with Chlamydia trachomatis infections.



GOAL



APPENDIX

	DATA				
1. Community Assets (%)		2003-05	2004-06	2005-07	2006-08
	Grade 7	60	60	60	64
	Grade 9	56	56	56	61
	Grade 11	58	60	60	63
Notes/Survey Questions	N/A				
Sources	Aggregated California Data: Technical Report. California Healthy Kids Survey, 2003-2004 & 2004-2005 : Main Report San Francisco: WestEd Health and Human Development Program for the California Department of Education. (http://www.wested.org/chks/pdf/sec_agg0305_reqmods.pdf) Aggregated California Data: Technical Report. California Healthy Kids Survey, 2004-2005 & 2005-2006 : Main Report San Francisco: WestEd Health and Human Development Program for the California Department of Education. (http://www.wested.org/chks/pdf/sec_agg0406_reqmods.pdf) Aggregated California Data: Technical Report. California Healthy Kids Survey, 2005-2006 & 2006-2007 : Main Report San Francisco: WestEd Health and Human Development Program for the California Department of Education. (http://www.wested.org/chks/pdf/CA_Agg_Upper_0507_tr.pdf) Aggregated California Data: Technical Report. California Healthy Kids Survey, 2006-2007 & 2007-2008 : Main Report San Francisco: WestEd Health and Human Development Program for the California Department of Education. (http://www.wested.org/chks/pdf/CA_Upper_0608_tr.pdf)				

	DATA				
2. School Assets (%)		2003-05	2004-06	2005-07	2006-08
	Grade 7	34	33	34	34
	Grade 9	24	25	25	28
	Grade 11	29	31	31	33
Notes/Survey Questions	N/A				
Sources	Aggregated California Data: Technical Report. California Healthy Kids Survey, 2003-2004 & 2004-2005 : Main Report San Francisco: WestEd Health and Human Development Program for the California Department of Education. (http://www.wested.org/chks/pdf/sec_agg0305_reqmods.pdf) Aggregated California Data: Technical Report. California Healthy Kids Survey, 2004-2005 & 2005-2006 : Main Report San Francisco: WestEd Health and Human Development Program for the California Department of Education. (http://www.wested.org/chks/pdf/sec_agg0406_reqmods.pdf) Aggregated California Data: Technical Report. California Healthy Kids Survey, 2005-2006 & 2006-2007 : Main Report San Francisco: WestEd Health and Human Development Program for the California Department of Education. (http://www.wested.org/chks/pdf/CA_Agg_Upper_0507_tr.pdf) Aggregated California Data: Technical Report. California Healthy Kids Survey, 2006-2007 & 2007-2008 : Main Report San Francisco: WestEd Health and Human Development Program for the California Department of Education. (http://www.wested.org/chks/pdf/CA_Upper_0608_tr.pdf)				

	DATA				
3. Home Assets (%)		2003-05	2004-06	2005-07	2006-08
	Grade 7	70		70	
	Grade 9	60		60	
	Grade 11	59		58	
Notes/Survey Questions	N/A				
Sources	<p>Aggregated California Data: Technical Report. California Healthy Kids Survey, 2003-2004 & 2004-2005: Main Report San Francisco: WestEd Health and Human Development Program for the California Department of Education. (http://www.wested.org/chks/pdf/sec_agg0305_reqmods.pdf)</p> <p>Aggregated California Data: Technical Report. California Healthy Kids Survey, 2004-2005 & 2005-2006: Main Report San Francisco: WestEd Health and Human Development Program for the California Department of Education. (http://www.wested.org/chks/pdf/sec_agg0406_reqmods.pdf)</p> <p>Aggregated California Data: Technical Report. California Healthy Kids Survey, 2005-2006 & 2006-2007: Main Report San Francisco: WestEd Health and Human Development Program for the California Department of Education. (http://www.wested.org/chks/pdf/CA_Agg_Upper_0507_tr.pdf)</p> <p>Aggregated California Data: Technical Report. California Healthy Kids Survey, 2006-2007 & 2007-2008: Main Report San Francisco: WestEd Health and Human Development Program for the California Department of Education. (http://www.wested.org/chks/pdf/CA_Upper_0608_tr.pdf)</p>				

	DATA				
4. Currently Insured (Age 10-19)		2001	2003	2005	2007
	Est. #	4,517,000	4,796,000	5,062,000	5,364,000
	%	86.2	88.6	89.3	90.1
	95% C.I.	(85.2 - 87.3)	(87.5 - 89.8)	(88.1 - 90.6)	(88.9 - 91.2)
Notes/Survey Questions	<p>Survey Question 2001: Constructed using the various health insurance questions. This variable is a simple breakdown of currently insured versus currently uninsured people.</p> <p>Survey Question 2003, 2005, & 2007: Constructed using various health insurance questions.</p>				
Sources	California Health Interview Survey. CHIS 2001, 2003, 2005, & 2007 Population age 10-19 AskCHIS. Los Angeles, CA: UCLA Center for Health Policy Research. Accessed May 2010.				

	DATA		
5. Consistent use of Safety Belts (%)		2005-07	2006-08
	Grade 7	56	61
	Grade 9	51	53
	Grade 11	60	63
Notes/Survey Questions	Survey Question: How often do you wear a seat belt when riding in a car driven by someone else? (Percentage is those who answered “always.”)		
Sources	Aggregated California Data: Technical Report. California Healthy Kids Survey, 2005-2006 & 2006-2007: Main Report San Francisco: WestEd Health and Human Development Program for the California Department of Education. (http://www.wested.org/chks/pdf/CA_Agg_Upper_0507_tr.pdf) Aggregated California Data: Technical Report. California Healthy Kids Survey, 2006-2007 & 2007-2008: Main Report San Francisco: WestEd Health and Human Development Program for the California Department of Education. (http://www.wested.org/chks/pdf/CA_Upper_0608_tr.pdf)		

	DATA				
6. Drunk Driving Exposure (%)		2001-2002	2003-2004	2005-2006	2007-2008
	Grade 7	40	34.6	37	40.3
	Grade 9	23.3	18.6	19.8	22.6
	Grade 11	29.9	27	29.6	31.8
Notes/Survey Questions	Survey Question for Grade 7: “During your life, how many times have you ridden in a car driven by someone who had been drinking alcohol?” (Percentages are for one or more times) Survey Question for Grades 9 and 11: “During your life, how many times have you ever driven a car when you had been drinking alcohol or been in a car driven by a friend when he or she had been drinking?” (Percentages are for one or more times)				
Sources	From 12 th Biennial Statewide Survey of California Students by Gregory Austin and Rodney Skager. Copyright 2008 by WestEd. http://www.wested.org/online_pubs/hhdp/css_12th_compendium.pdf All rights reserved				

	DATA				
7. Binge Drinking (Past 30 Days) (%)		2001-2002	2003-2004	2005-2006	2007-2008
	Grade 7	4.3	4.9	5.1	5.6
	Grade 9	11.1	10.2	10	11.1
	Grade 11	18.9	14.8	15.2	17.4
Notes/Survey Questions	Survey Question: “During the past 30 days, on how many days did you use five or more drinks of alcohol in a row, that is, within a couple of hours?” (Percentages are for one or more days)				
Sources	From 12 th Biennial Statewide Survey of California Students by Gregory Austin and Rodney Skager. Copyright 2008 by WestEd. http://www.wested.org/online_pubs/hhdp/css_12th_compendium.pdf All rights reserved				

	DATA				
8. Tobacco Use (Past 30 days) (%)		2001-2002	2003-2004	2005-2006	2007-2008
	Grade 7	4.3	4.9	5.1	5.6
	Grade 9	11.1	10.2	10	11.1
	Grade 11	18.9	14.8	15.2	17.4
Notes/Survey Questions	Survey Question: "During the past 30 days, on how many days did you use cigarettes?" (Percentages are for one or more days)				
Sources	From 12 th Biennial Statewide Survey of California Students by Gregory Austin and Rodney Skager. Copyright 2008 by WestEd. http://www.wested.org/online_pubs/hhdp/css_12th_compendium.pdf All rights reserved				

	DATA				
9. Marijuana Use (Past 30 days) (%)		2001-2002	2003-2004	2005-2006	2007-2008
	Grade 7	4	3.9	4.7	6.6
	Grade 9	13.4	12.4	12.6	15.4
	Grade 11	23	19.8	19.2	23.9
Notes/Survey Questions	Survey Question: "During the past 30 days, on how many days did you use marijuana?" (Percentages are for one or more days)				
Sources	From 12 th Biennial Statewide Survey of California Students by Gregory Austin and Rodney Skager. Copyright 2008 by WestEd. http://www.wested.org/online_pubs/hhdp/css_12th_compendium.pdf All rights reserved				

	DATA				
10. Physical Fighting (%)		2001-2002	2003-2004	2005-2006	2007-2008
	Grade 7	27.2	28.1	32	32.2
	Grade 9	23.7	26	25.1	24.6
	Grade 11	19	20.5	20	22.8
Notes/Survey Questions	Survey Question: "During the past 12 months, how many times on school property have you been in a physical fight?" (Percentages are for one or more times)				
Sources	From 12 th Biennial Statewide Survey of California Students by Gregory Austin and Rodney Skager. Copyright 2008 by WestEd. http://www.wested.org/online_pubs/hhdp/css_12th_compendium.pdf All rights reserved				

	DATA				
11. Weapon Carrying (%)		2001-2002	2003-2004	2005-2006	2007-2008
	Grade 7	N/A	10	9.1	9.6
	Grade 9	8.3	11.4	12.6	12.8
	Grade 11	10	13	12.8	13.1
Notes/Survey Questions	Survey Question: "During the past 12 months, how many times on school property have you carried any weapon?" (Percentages are for once or more)				
Sources	From 12 th Biennial Statewide Survey of California Students by Gregory Austin and Rodney Skager. Copyright 2008 by WestEd. http://www.wested.org/online_pubs/hhdp/css_12th_compendium.pdf All rights reserved				

	DATA			
12. Five-a-day (Age 12-17)		2003	2005	2007
	Est. N	815,000	777,000	713,000
	%	25	23.1	20.3
	95% C.I.	(23.1 - 26.9)	(21.2 - 25.1)	(18.4 - 22.2)
Notes/Survey Questions	Survey Question in 2003 & 2005: "Yesterday, how many servings of fruit, such as an apple or banana, did you eat?" AND "Yesterday, how many servings of vegetables, like corn, green beans, green salad, or other vegetables did you have?" (Results displayed for 5+ servings of fruits/vegetables daily) Survey Question in 2007: This variable was created based on multiple diet questions asked for prior 24 hour eating habits. (Results displayed for 5+ servings of fruits/vegetables daily)			
Sources	California Health Interview Survey. CHIS 2003, 2005, & 2007 Teen AskCHIS. Los Angeles, CA: UCLA Center for Health Policy Research. Accessed May 2010.			

	DATA				
13. Vigorous Activity (Age 12-17)		2001	2003	2005	2007
	Est. N	1,929,000	2,146,000	2,233,000	2,272,000
	%	63.3	65.8	66.5	64.7
	95% C.I.	(61.5 - 65.1)	(63.7 - 68.0)	(64.3 - 68.7)	(62.4 - 67.0)
Notes/Survey Questions	Survey Question: "Not including school PE in the past 7 days, on how many days were you physically active for at least 60 minutes total per day?" (Results are displayed for: Engaged in vigorous activity 3 or more days)				
Sources	California Health Interview Survey. CHIS 2001, 2003, 2005, & 2007 Teen AskCHIS. Los Angeles, CA: UCLA Center for Health Policy Research. Accessed May 2010.				

	DATA			
14. Overweight and Obese (Age 12-17)		2003	2005	2007
	Est. N	403,000	478,000	467,000
	%	12.4	14.2	13.3
	95% C.I.	(10.9 - 13.9)	(12.5 - 15.9)	(11.6 - 14.9)
Notes/Survey Questions	This variable was created using age and gender specific BMI percentiles.			
Sources	California Health Interview Survey. CHIS 2003, 2005, & 2007 Teen AskCHIS. Los Angeles, CA: UCLA Center for Health Policy Research. Accessed May 2010.			

	DATA									
15. Death Rates		2000	2001	2002	2003	2004	2005	2006	2007	2008
	Age 10-14	17.9	15.2	15.5	16.8	14.6	14	14.3	12.8	12.4
	Age 15-19	42.7	48.6	56.8	56.7	56.9	59.1	56.9	57.1	51.8
Notes/Survey Questions	Note: Rates are per 100,000 population in specified groups.									
Sources	California Department of Public Health, Death Statistical Data Tables, 2008. http://www.cdph.ca.gov/data/statistics/Documents/VSC-2008-0502.pdf									

	DATA								
16. MVT Fatalities (Age 10-19)		2000	2001	2002	2003	2004	2005	2006	2007
	Fatalities	380	517	586	604	580	543	544	466
Notes/Survey Questions	Note: This represents unintentional motor vehicle traffic fatalities in the categories of occupant, motorcyclist, bicyclist, pedestrian, other, and unspecified.								
Sources	EPIcenter Injury Data Query System, California Department of Public Health, Safe and Active Communities Branch, accessed June 15, 2010, http://www.applications.dhs.ca.gov/epicdata/								

	DATA									
17. Fatalities by Highest Driver BAC			2001	2002	2003	2004	2005	2006	2007	2008
		#	68	48	45	50	39	34	39	17
	BAC= .01-.07	%	7%	8%	8%	9%	7%	6%	9%	5%
		#	239	127	121	132	132	128	84	85
	BAC= .08+	%	26%	21%	20%	23%	23%	24%	19%	23%
Notes/Survey Questions	Blood Alcohol Concentration: The BAC Is Measured As A Percentage By Weight Of Alcohol In The Blood (grams/deciliter). A Positive BAC Level (0.01 G/dl And Higher) Indicates That Alcohol Was Consumed By The Person Tested. A BAC Level Of 0.10 G/dl Or More Indicates That The Person Was Intoxicated.									
Sources	National Highway Traffic Safety Administration's Fatality Analysis Reporting System Data prepared by request: <i>CALIFORNIA 10-19 YEAR OLD FATALITIES IN MOTOR VEHICLE TRAFFIC CRASHES BY YEAR AND HIGHEST DRIVER/MOTORCYCLE RIDER BAC IN THE CRASH FATALITY ANALYSIS REPORTING SYSTEM (FARS) 2000-2007 FINAL & 2008 ARF</i>									

	DATA								
18. Homicide Fatalities		2000	2001	2002	2003	2004	2005	2006	2007
	Number	357	346	367	403	441	426	495	413
Notes/Survey Questions	Note: This data represents assault/homicide fatalities in the categories of abuse & neglect, blunt object, cut/pierce, fight (unarmed), firearm, and other.								
Sources	EPIcenter Injury Data Query System, California Department of Public Health, Safe and Active Communities Branch, accessed June 15, 2010, http://www.applications.dhs.ca.gov/epicdata/								

	DATA							
19. Self-inflicted injuries/ Suicide Attempts		2000	2001	2002	2003	2004	2005	2006
	Number	3,199	3,429	3,403	3,307	3,064	3,205	2,952
Notes/Survey Questions	Note: This data represents self-inflicted injuries in the categories of cut/pierce, firearm, hanging/suffocation, jump, poisoning, and other.							
Sources	EPIcenter Injury Data Query System, California Department of Public Health, Safe and Active Communities Branch, accessed June 15, 2010, http://www.applications.dhs.ca.gov/epicdata/							

	DATA								
20. Suicide Fatalities		2000	2001	2002	2003	2004	2005	2006	2007
	Number	153	146	138	144	177	153	166	134
Notes/Survey Questions	Note: This data represents self-inflicted/suicide fatalities in the categories of cut/pierce, firearm, hanging/suffocation, jump, poisoning, and other.								
Sources	EPICenter Injury Data Query System, California Department of Public Health, Safe and Active Communities Branch, accessed June 15, 2010, http://www.applications.dhs.ca.gov/epicdata/								

	DATA				
21. Sad and Hopeless Feelings (%)		2001-2002	2003-2004	2005-2006	2007-2008
	Grade 7	24.6	23.9	28.1	27.8
	Grade 9	29.7	31.8	29.7	30.5
	Grade 11	35.3	35	33.1	34.7
Notes/Survey Questions	Survey Question: "During the past 12 months, did you ever feel so sad or hopeless almost every day for two weeks or more that you stopped doing some usual activities?"				
Sources	From 12 th Biennial Statewide Survey of California Students by Gregory Austin and Rodney Skager. Copyright 2008 by WestEd. http://www.wested.org/online_pubs/hhdp/css_12th_compendium.pdf All rights reserved				

	DATA					
22. Abstinence and Condom Use (Age 12-17)	ABSTINENCE					
		2001	2003	2005	2007	
	Est. N	1,596,000	1,619,000	1,717,000	1,895,000	
	%	80.9	76.9	78.6	80	
	95% C.I.	(79.1 - 82.7)	(74.6 - 79.3)	(76.2 - 80.9)	(77.7 - 82.4)	
	CONDOM USE					
		2001	2003	2005		
	Est. N	396,000	381,000	403,000		
	%	78.4	77.8	91.5		
	95% C.I.	(73.7 - 83.1)	(72.3 - 83.2)	(88.2 - 94.8)		
	Notes/Survey Questions	ABSTINENCE Survey Question: Respondents were asked, "Have you ever had sexual intercourse?" and "How old were you when you had sexual intercourse for the first time?" Asked of all respondents ages 14 to 17 years whose parents gave permission to discuss sexual issues in the survey.				

	<p>CONDOM USE Survey Question: Respondents were asked about protection methods used the most recent time they had sexual intercourse. Asked of respondents 12 to 17 years of age with permission to ask about sex AND who have had sexual intercourse.</p>
Sources	<p>ABSTINENCE California Health Interview Survey. CHIS 2001, 2003, 2005, & 2007 Teen AskCHIS. Los Angeles, CA: UCLA Center for Health Policy Research. Accessed May 2010.</p>
	<p>CONDOM USE California Health Interview Survey. CHIS 2001, 2003, & 2005 Teen AskCHIS. Los Angeles, CA: UCLA Center for Health Policy Research. Accessed May 2010.</p>

	DATA								
23. Birth Rate		2000	2001	2002	2003	2004	2005	2006	2007
	Age 10-14	0.7	0.6	0.5	0.5	0.5	0.5	0.5	0.5
	Age 15-19	46.7	43.7	40.7	39.1	38.2	37.2	37.8	37.1
Notes/Survey Questions	Rates are per 1,000 age-specific females								
Sources	<p>Original Source: Number of births are derived from the California Birth Statistical Master File, 2000-2007. State of California, Department of Finance, <i>Race/Ethnic Population with Age and Sex Detail, 2000-2050</i>. Sacramento, California, July 2007 Prepared by: California Department of Public Health, Maternal, Child and Adolescent Health Program. Accessed at http://californiateenhealth.org/download/ASHWG_Integrated_Data_Tables.pdf</p>								

	DATA									
24. HIV & AIDS Cases (Age 13-19)		2000	2001	2002	2003	2004	2005	2006	2007	2008
	HIV	36	31	49	42	50	65	102	116	135
	AIDS	26	31	24	23	22	27	24	25	26
Notes/Survey Questions	N/A									
Sources	State of California, Department of Public Health, Office of AIDS, HIV/AIDS Case Registry cases reported as of May 9, 2010.									

	DATA								
25. Female Chlamydia Rates	FEMALE								
		2000	2001	2002	2003	2004	2005	2006	2007
	10-14	1.072	0.941	0.964	0.87	0.911	0.832	0.8	0.811
	15-19	21.35	21.24	21.86	22.16	22.52	22.69	22.78	23.15
	MALE								
		2000	2001	2002	2003	2004	2005	2006	2007
	10-14	0.115	0.116	0.115	0.091	0.116	0.095	0.1	0.098
15-19	4.093	4.266	4.37	4.572	4.679	4.929	5.024	5.326	
Notes/Survey Questions	FEMALE Rates are per 1,000 age-specific females								
	MALE Rates are per 1,000 age-specific males.								
Sources	Source: California Department of Public Health, STD Control Branch California Department of Finance, Race/Ethnic Population with Age & Sex Detail, 2000-2050, Sacramento, CA, July 2007. Prepared by: California Department of Public Health, STD Control Branch, July 2008 Accessed at http://californiateenhealth.org/download/ASHWG_Integrated_Data_Tables.pdf								