

California Adolescent Sexual Health Work Group (ASHWG) 2007 Data for California Adolescent Births, AIDS, STDs

August 2009

Special thanks to:

Joan Chow, MPH, DrPH

Chair Data Integration Subcommittee
Chief, Epidemiology Unit
Surveillance and Epidemiology Section
Sexually Transmitted Disease Control Branch
California Department of Public Health

Denise Gilson

Chief, Surveillance and Data Management Unit
Surveillance and Epidemiology Section
Sexually Transmitted Disease Control Branch
California Department of Public Health

Aldona Herrndorf, MPH

Health Services Researcher,
Epidemiology, Assessment and Program Development,
Maternal, Child and Adolescent Health Program/Center
for Family Health
California Department of Public Health

Lisette Tabshouri, MA

HIV/AIDS Case Registry Section
Office of AIDS
California Department of Public Health

Marina Chabot, MSc

UCSF Family PACT Program Support and Evaluation
Bixby Center for Global Reproductive Health
University of California, San Francisco

Winnie Dysle

HIV/AIDS Case Registry Section
Office of AIDS
California Department of Public Health

Paul Gibson, MS, MPH

Health Promotion Coordinator
Health Promotion and Health Education Unit
Disease Prevention Section
STD Control Branch, CA Department of Public Health

Sandi Goldstein, MPH

California Adolescent Health Collaborative
Oakland, CA

Liz Worthy

California Adolescent Health Collaborative
Oakland, CA

The California Adolescent Sexual Health Work Group (ASHWG) is a standing work group of program managers from the California Department of Public Health, California Department of Education, and key non-governmental organizations committed to working more effectively to address the sexual and reproductive health of California adolescents. Its vision is to create a coordinated, collaborative, and integrated system among government and non-government organizations to promote and protect the sexual and reproductive health of youth in California.

The ASHWG Data Integration sub-committee's intention is to improve comparability and expand access to and use of HIV, STD, and Teen Birth data. Members of this Sub-committee include epidemiologists from California Department of Public Health branches of Sexually Transmitted Diseases (STD) Control, Office of AIDS (OA), Maternal, Child and Adolescent Health (MCAH) and non-governmental "end users" of their data.

The ASHWG Data Tables and Charts for Adolescent Births, AIDS and STDs are presented with standardized data elements across all conditions, i.e. age, race, gender, and timeframe. The purpose is to make useable data readily available for improved program planning, implementation and evaluation by programs serving adolescents (at risk).

Adolescent Birth Data - California

Adolescent Birth Rates* and Births by Mother's Age, For California Females** Age 10-19, 2000-2007																
Age Group	2000		2001		2002		2003		2004		2005		2006		2007	
	Births	Birth Rate	Births	Birth Rate	Births	Birth Rate	Births	Birth Rate	Births	Birth Rate	Births	Birth Rate	Births	Birth Rate	Births	Birth Rate
Age 10-14	895	0.7	809	0.6	743	0.5	710	0.5	695	0.5	756	0.5	681	0.5	663	0.5
Age 15-17	18,887	26.5	17,307	23.8	16,660	22.4	16,193	21.2	16,263	20.6	16,740	20.3	17,208	20.0	17,582	19.9
Age 18-19	36,486	76.8	35,659	73.5	33,541	68.5	33,137	66.5	33,474	65.5	33,277	63.9	35,562	66.3	35,811	64.3
Age 15-19	55,373	46.7	52,966	43.7	50,201	40.7	49,330	39.1	49,737	38.2	50,017	37.2	52,770	37.8	53,393	37.1

*Rate per 1,000 age-specific females

** Births included in these calculations are to mothers who report a California residence on the birth certification.

Adolescent Birth Rates* and Births by Race/Ethnicity, For California Females** Age 15-19, 2000- 2007																
Race/Ethnicity	2000		2001		2002		2003		2004		2005		2006		2007	
	Births	Birth Rate	Births	Birth Rate	Births	Birth Rate	Births	Birth Rate	Births	Birth Rate	Births	Birth Rate	Births	Birth Rate	Births	Birth Rate
White (Non Hispanic)	9,871	21.6	8,989	19.2	8,375	17.5	7,947	16.3	7,340	14.8	7,028	13.9	7,118	13.9	6,995	13.6
African American (Non Hispanic)	4,841	58.0	4,354	50.1	3,913	43.7	3,890	41.9	3,872	40.2	3,819	38.4	4,143	40.8	4,169	40.5
American Indian (Non Hispanic)	316	43.5	283	37.0	276	34.8	250	30.1	245	28.3	281	31.2	271	29.3	278	29.0
Asian/Pacific Islander (Non Hispanic)	2,286	16.4	2,125	15.0	1,919	13.5	1,809	12.6	1,679	11.6	1,675	11.6	1,549	10.9	1,617	10.9
Hispanic	36,892	78.7	36,051	76.1	34,613	72.0	34,252	69.1	35,315	68.1	36,025	65.4	38,243	65.0	38,738	61.9

*Rate per 1,000 age-specific females

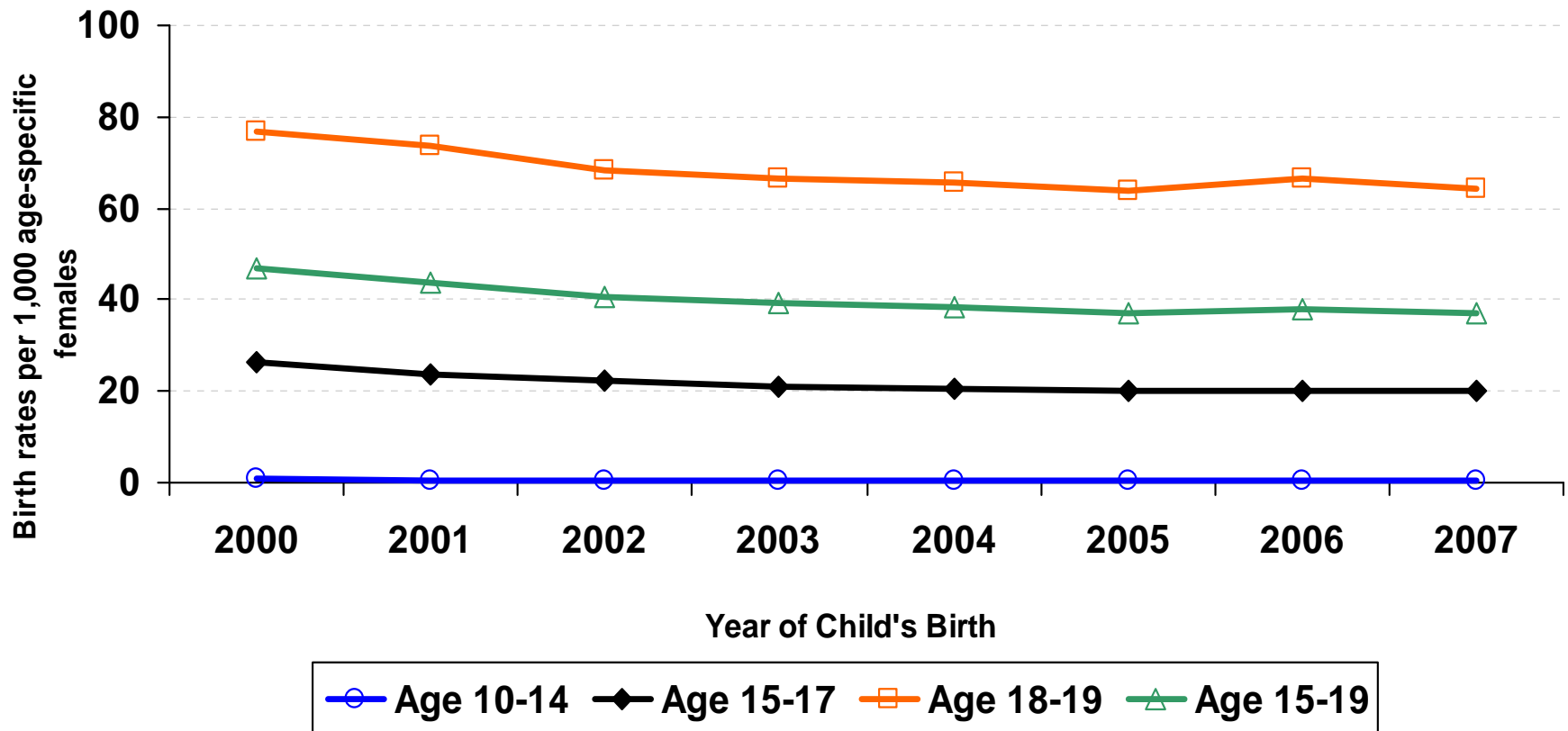
** Births included in these calculations are to mothers who report a California residence on the birth certification.

Source: Number of births are derived from the California Birth Statistical Master File, 2000-2007.

State of California, Department of Finance, *Race/Ethnic Population with Age and Sex Detail, 2000-2050*. Sacramento, California, July 2007

Prepared by: California Department of Public Health, Maternal, Child and Adolescent Health Program.

Adolescent Birth Rates by Mother's Age For Females Age 10-19 California, 2000 - 2007

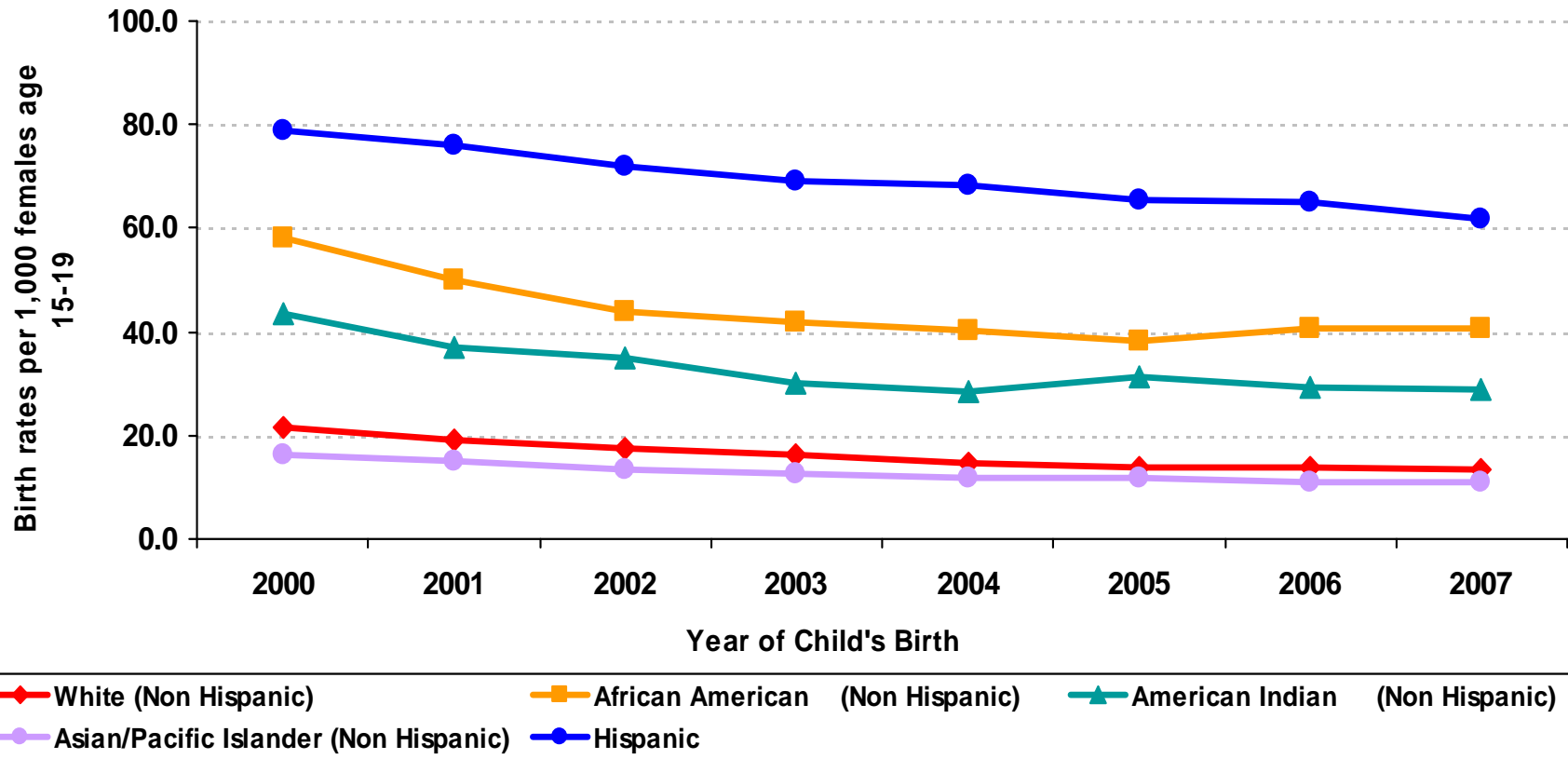


Source: California Birth Statistical Master File, 2000-2007.

California Department of Finance, Race/Ethnic Population with Age & Sex Detail, 2000-2050, Sacramento, CA, July 2007.

Prepared by: California Department of Public Health, Maternal, Child and Adolescent Health Program.

Adolescent Birth Rates by Race/Ethnicity For Females Age 15-19 California, 2000 - 2007



Source: California Birth Statistical Master File, 2000-2007.
 California Department of Finance, Race/Ethnic Population with Age & Sex Detail, 2000-2050, Sacramento, CA, July 2007.
 Prepared by: California Department of Public Health, Maternal, Child and Adolescent Health Program.

Adolescent/Young Adult AIDS Data - California

Living AIDS Cases and Rates Among 10-24 Year Olds by Race/Ethnicity, Age Group and Gender, Cummulative Cases Reported Through July 31, 2007						
AGE GROUP BY RACE/ETHNICITY			FEMALE		MALE	
			Cases	Rate	Cases	Rate
White						
Ages	10 - 14	*	^	14	3.0	
	15 - 17	*	^	18	5.6	
	18 - 19	*	*	38	17.1	
	(15 - 19)	23	4.5	56	10.3	
	20 - 24	87	17.6	595	110.9	
African American/Black						
Ages	10 - 14	11	^	*	^	
	15 - 17	8	^	*	*	
	18 - 19	18	44.4	*	*	
	(15 - 19)	26	25.2	47	43.7	
	20 - 24	125	141.2	321	332.5	
Hispanic/Latino						
Ages	10 - 14	15	2.2	19	2.7	
	15 - 17	15	3.8	36	8.7	
	18 - 19	26	11.4	97	39.9	
	(15 - 19)	41	6.6	133	20.2	
	20 - 24	160	31.3	1,053	188.3	
Other/Unknown						
Ages	10 - 14	*	^	*	^	
	15 - 17	*	^	*	^	
	18 - 19	*	^	*	*	
	(15 - 19)	7	^	15	7.3	
	20 - 24	19	9.7	96	46.8	
TOTAL						
Ages	10 - 14	38	2.7	45	3.1	
	15 - 17	36	4.1	71	7.7	
	18 - 19	61	11.0	180	30.5	
	(15 - 19)	97	6.7	251	16.6	
	20 - 24	391	30.3	2,065	147.8	

*Data withheld to ensure case confidentiality.

^Rates where the Relative Standard error was above 0.3000 withheld due to statistical instability.

Other/Unknown includes Asian/Pacific Islanders, Native Americans, Multi-Race and those with missing race/ethnicity information.

Source: California Department of Public Health, Office of AIDS, HIV/AIDS Case Registry Section, data as of October 31, 2007.

California Department of Finance, Race/Ethnic Population with Age & Sex Detail, 2000-2050, Sacramento, CA, July 2007

For more information, call the HIV/AIDS Case Registry Section at (916) 449-5866.

Rundate: 11/07/2007, WD.

Adolescent/Young Adult AIDS Data - California

Living AIDS Cases and Rates Among 10-24 Year Olds for MSM and Heterosexual Contact Modes of Exposure by Race/Ethnicity, Age Group and Gender. Cumulative Cases Reported Through July 31, 2007						
AGE GROUP BY RACE/ETHNICITY			FEMALE		MALE	
			Cases	Rate	Cases	Rate
White	Ages	10 - 14	0		0	
		15 - 17	*	^	9	^
	18 - 19	5	^	20	9.0	
	(15 - 19)	*	^	29	5.3	
	20 - 24	50	10.1	393	73.3	
	African American/Black	Ages	10 - 14	0		0
15 - 17			5	^	11	^
18 - 19		10	^	25	58.6	
(15 - 19)		15	14.6	36	33.5	
20 - 24		70	79.1	246	254.8	
Hispanic/Latino		Ages	10 - 14	0		*
	15 - 17		5	^	18	4.3
	18 - 19	18	7.9	71	29.2	
	(15 - 19)	23	3.7	89	13.5	
	20 - 24	113	22.1	793	141.8	
	Other/Unknown	Ages	10 - 14	0		0
15 - 17			*	^	0	
18 - 19		0		7	^	
(15 - 19)		*	^	7	^	
20 - 24		9	^	77	37.5	
TOTAL		Ages	10 - 14	0		*
	15 - 17		15	1.7	38	4.1
	18 - 19	33	5.9	123	20.8	
	(15 - 19)	48	3.3	161	10.6	
	20 - 24	242	18.8	1,509	108.0	

*Data withheld to ensure case confidentiality.

^Rates where the Relative Standard error was above 0.3000 withheld due to statistical instability.

MSM=Men who have sex with men.

Other/Unknown includes Asian/Pacific Islanders, Native Americans, Multi-Race and those with missing race/ethnicity information.

Source: California Department of Public Health, Office of AIDS, HIV/AIDS Case Registry Section, data as of October 31, 2007.

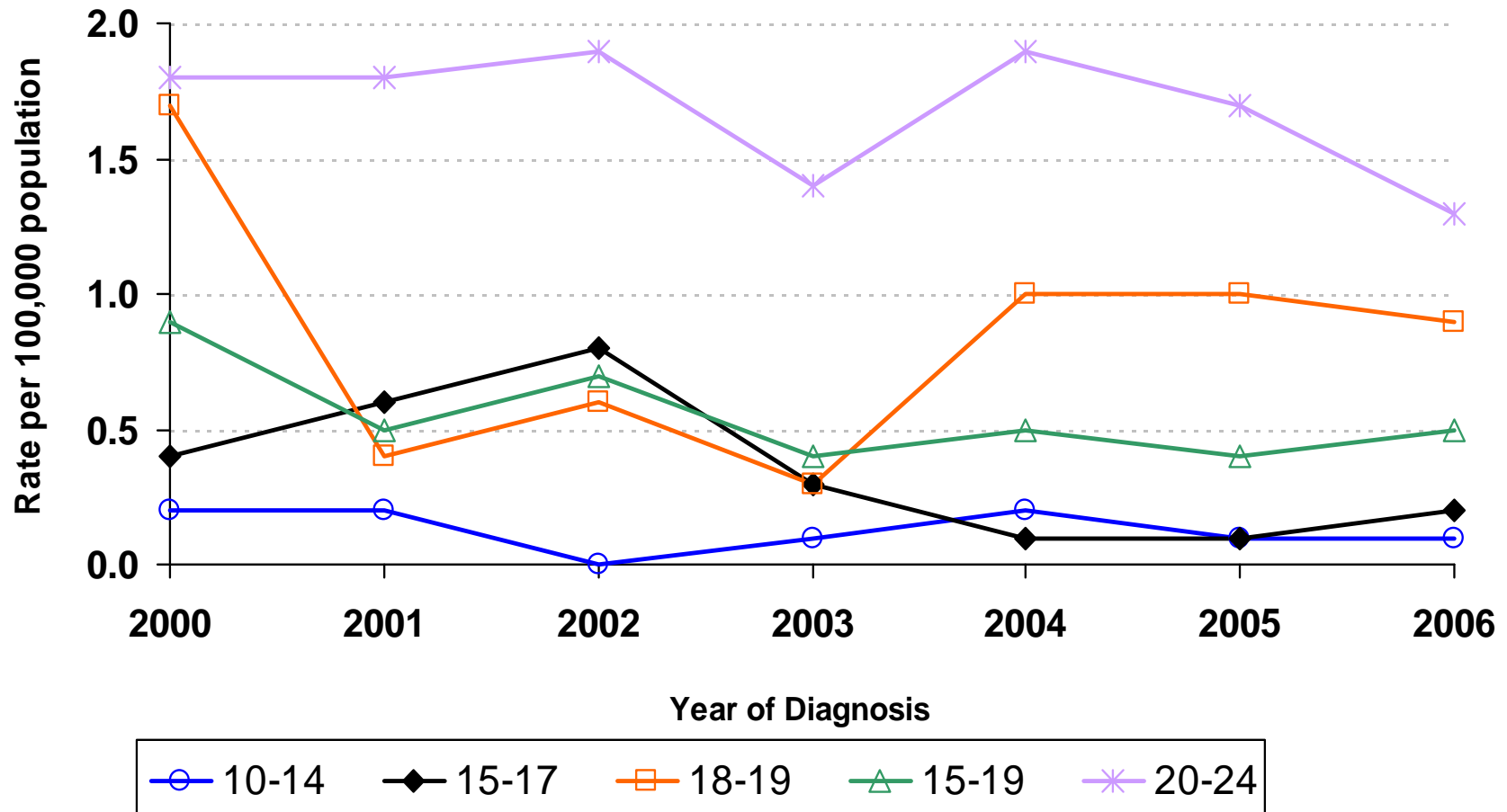
California Department of Finance, Race/Ethnic Population with Age & Sex Detail, 2000-2050, Sacramento, CA, July 2007.

For more information, call the HIV/AIDS Case Registry Section at (916) 449-5866.

Rundate: 11/07/2007, WD.

AIDS Rates Among Living California Females by Age Group and Year of Diagnosis

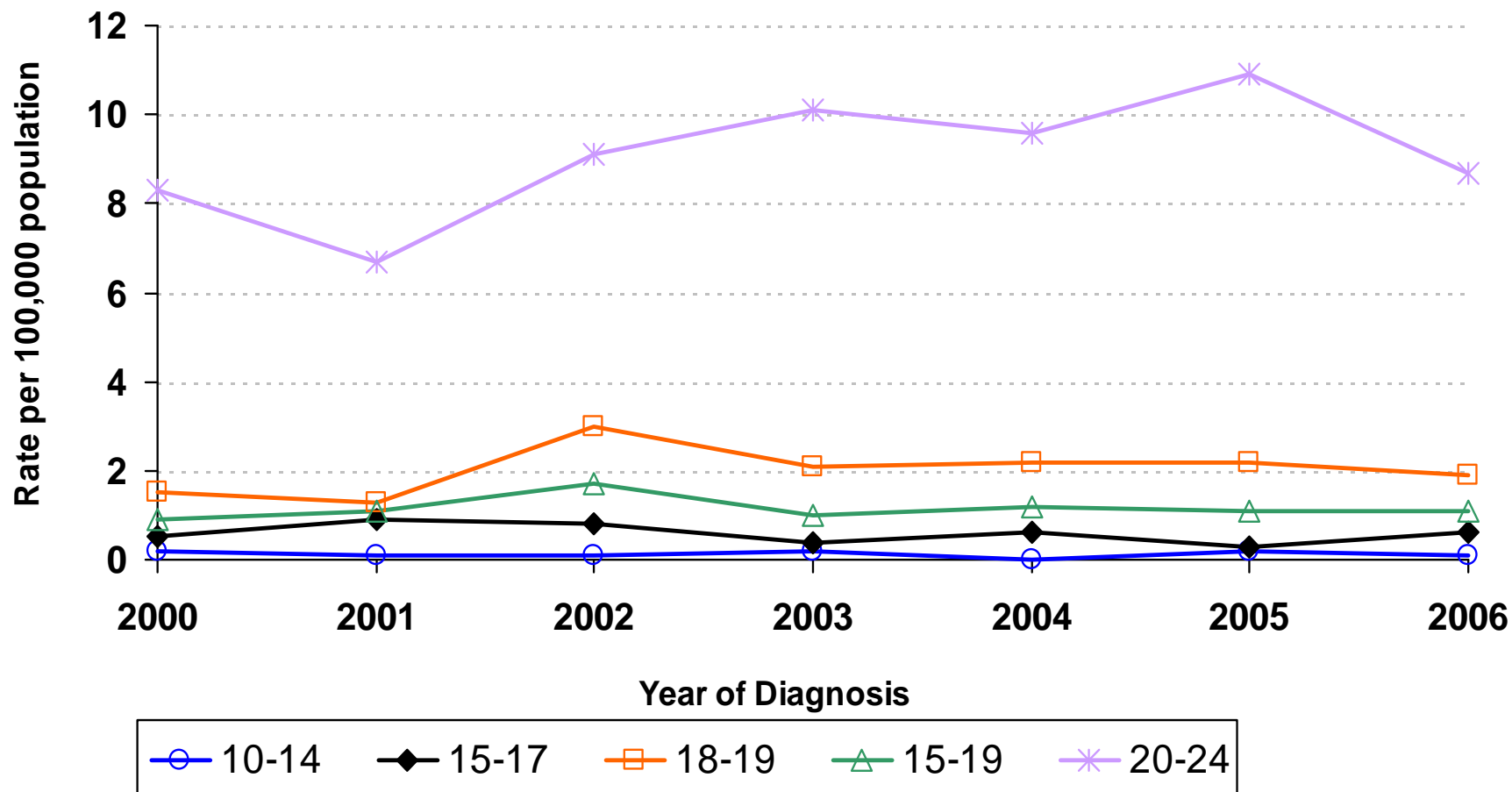
January 2000 through December 2006



Source: California Department of Public Health, Office of AIDS, HIV/AIDS Case Registry Section, data as of October 31, 2007. California Department of Finance, Race/Ethnic Population with Age & Sex Detail, 2000-2050, Sacramento, CA, July 2007. For more information, call the HIV/AIDS Case Registry Section at (916) 449-5866.



AIDS Rates Among Living California Males by Age Group and Year of Diagnosis From January 2000 Through December 2006



Source: California Department of Public Health, Office of AIDS, HIV/AIDS Case Registry Section, data as of October 31, 2007. California Department of Finance, Race/Ethnic Population with Age & Sex Detail, 2000-2050, Sacramento, CA, July 2007. For more information, call the HIV/AIDS Case Registry Section at (916) 449-5866.



Adolescent Chlamydia Data – California Females

Chlamydia Rates for Adolescent Females by Age Group California, 2000–2007																
Age Group	2000		2001		2002		2003		2004		2005		2006		2007	
	Cases	Rate	Cases	Rate	Cases	Rate	Cases	Rate	Cases	Rate	Cases	Rate	Cases	Rate	Cases	Rate
10-14	1,362	107.2	1,247	94.1	1,323	96.4	1,226	87.0	1,305	91.1	1,192	83.2	1,135	80.0	1,130	81.1
15-17	11,399	1,600.9	11,386	1,567.3	11,947	1,607.5	12,269	1,605.7	12,652	1,601.4	13,175	1,597.4	13,495	1,571.7	13,723	1,555.8
18-19	13,937	2,934.7	14,345	2,958.8	15,010	3,063.9	15,713	3,152.1	16,644	3,259.1	17,344	3,332.7	18,288	3,408.9	19,580	3,517.1
15-19	25,336	2,134.5	25,731	2,124.2	26,957	2,186.1	27,982	2,216.2	29,296	2,252.3	30,519	2,268.8	31,783	2,278.2	33,303	2,314.7

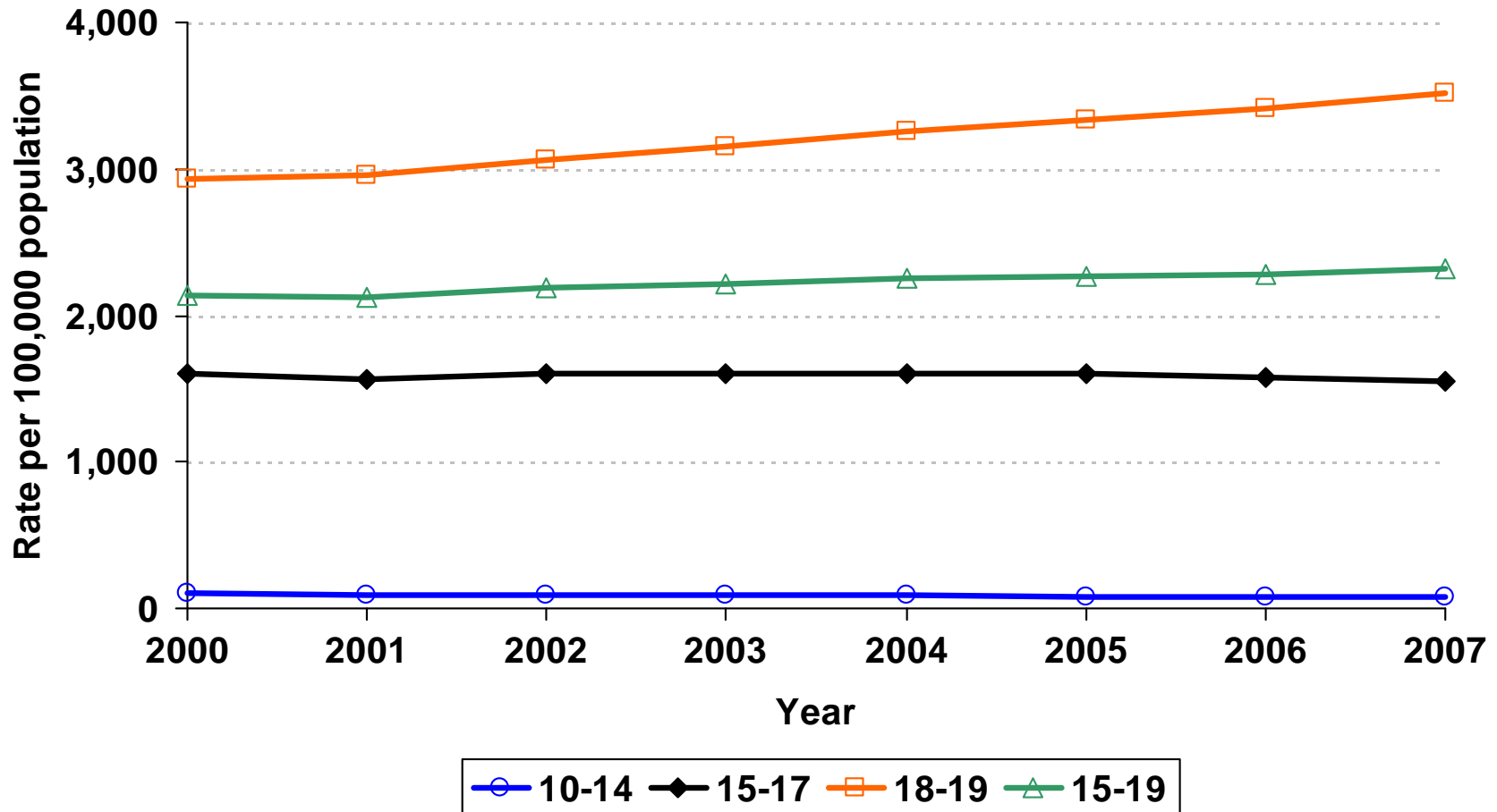
* Rate per 100,000 population

Chlamydia Rates by Race/Ethnicity, For Female California Residents Age 15-19, 2000- 2007																
Race/Ethnicity	2000		2001		2002		2003		2004		2005		2006		2007	
	Cases	Rate	Cases	Rate	Cases	Rate	Cases	Rate	Cases	Rate	Cases	Rate	Cases	Rate	Cases	Rate
Native American/Alaskan N	106	1,459.1	98	1,282.7	109	1,374.4	129	1,553.7	83	960.4	111	1,232.8	116	1,253.2	149	1,555.8
Asian/Pacific Islander	758	544.0	759	537.3	880	618.8	872	607.9	878	607.6	874	606.2	880	603.4	911	616.6
African American/Black	4,164	4,985.0	4,120	4,745.3	4,427	4,938.9	4,821	5,193.4	5,236	5,437.6	5,945	5,973.7	6,381	6,279.3	6,565	6,371.3
Hispanic/Latino	7,799	1,664.0	8,268	1,744.4	8,686	1,806.1	9,116	1,838.0	9,405	1,812.5	9,973	1,811.2	10,213	1,734.7	10,608	1,695.6
White	3,596	788.2	3,423	729.9	3,811	795.4	4,297	880.5	4,357	875.8	4,144	819.1	4,046	789.0	4,380	851.0

* Rate per 100,000 age- and gender-specific population

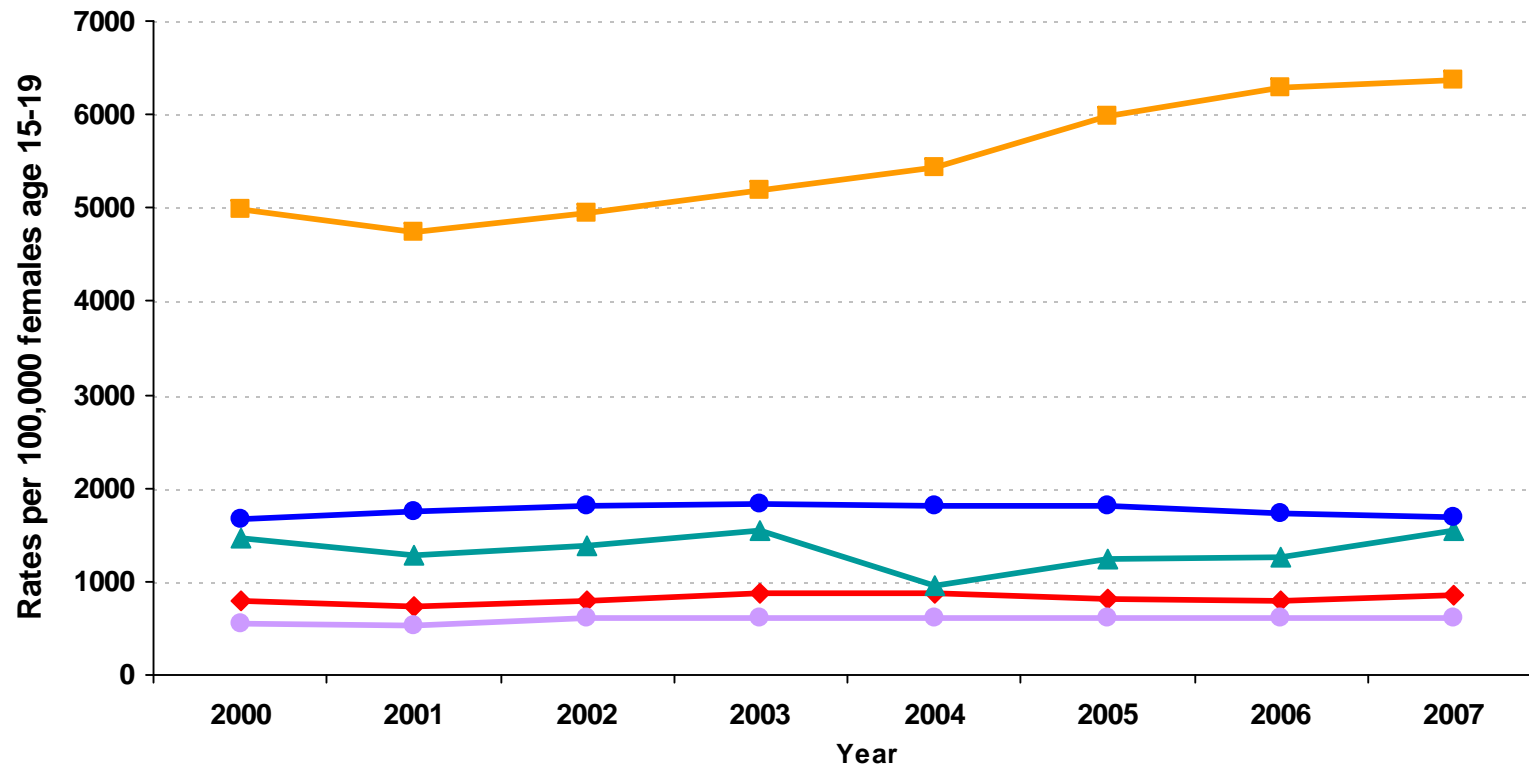
Source: California Department of Public Health, STD Control Branch
 California Department of Finance, Race/Ethnic Population with Age & Sex Detail, 2000-2050, Sacramento, CA, July 2007.
 Prepared by: California Department of Public Health, STD Control Branch, July 2008

Chlamydia Rates for Adolescent Females by Age Group California, 2000–2007



Source: California Department of Public Health, STD Control Branch
California Department of Finance, Race/Ethnic Population with Age & Sex Detail, 2000-2050, Sacramento, CA, July 2007.
Prepared by: California Department of Public Health, STD Control Branch

Chlamydia Rates by Race/Ethnicity For Females Age 15-19 California, 2000 - 2007



◆ White
 ■ African American/Black
 ▲ Native American/Alaskan Native
● Asian/Pacific Islander (Non Hispanic)
 ● Hispanic/Latino

Source: California Department of Public Health, STD Control Branch
 California Department of Finance, Race/Ethnic Population with Age & Sex Detail, 2000-2050, Sacramento, CA, July 2007.
 Prepared by: California Department of Public Health, STD Control Branch

Adolescent Chlamydia Data – California Males

Chlamydia Rates for Adolescent Males by Age Group, California, 2000–2007																	
Age Group	2000		2001		2002		2003		2004		2005		2006		2007		
	Cases	Rate	Cases	Rate	Cases	Rate	Cases	Rate	Cases	Rate	Cases	Rate	Cases	Rate	Cases	Rate	
10-14	154	11.5	162	11.6	165	11.5	134	9.1	174	11.6	142	9.5	148	10.0	143	9.8	
15-17	2,463	324.2	2,567	334.4	2,629	336.5	2,698	336.1	2,761	333.2	3,066	354.3	3,197	354.8	3,352	362.2	
18-19	2,767	533.9	2,964	560.4	3,099	585.1	3,402	640.0	3,652	674.0	3,922	709.8	4,193	735.8	4,725	799.5	
15-19	5,230	409.3	5,531	426.6	5,728	437.0	6,100	457.2	6,413	467.9	6,988	492.9	7,390	502.4	8,077	532.6	

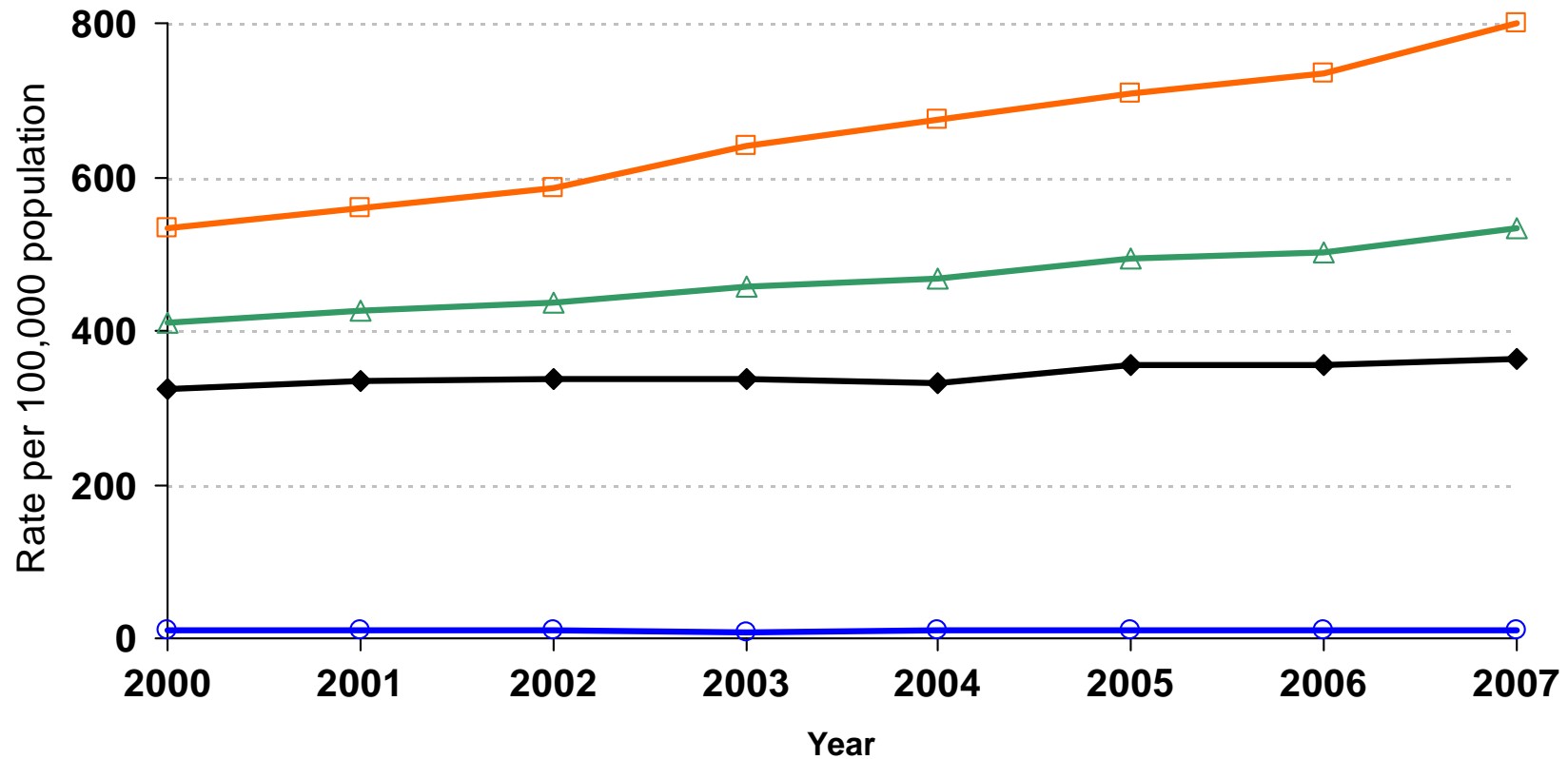
* Rate per 100,000 population

Chlamydia Rates by Race/Ethnicity, For Male California Residents Age 15-19, 2000- 2007																	
Race/Ethnicity	2000		2001		2002		2003		2004		2005		2006		2007		
	Cases	Rate	Cases	Rate	Cases	Rate	Cases	Rate	Cases	Rate	Cases	Rate	Cases	Rate	Cases	Rate	
Native American/Alaskan Native	14	182.9	16	198.0	20	235.8	25	285.0	21	231.3	18	191.5	16	165.8	18	182.3	
Asian/Pacific Islander	127	86.5	129	85.9	134	88.2	133	86.7	146	94.4	142	92.1	117	75.3	170	108.1	
African American/Black	1,294	1,450.5	1,253	1,352.8	1,344	1,410.9	1,475	1,506.4	1,625	1,608.1	1,885	1,809.9	2,099	1,974.6	2,227	2,070.0	
Hispanic/Latino	1,768	341.5	1,948	379.1	1,979	386.3	2,075	397.2	2,151	395.4	2,242	388.3	2,276	368.1	2,418	367.9	
White	533	109.8	534	106.9	540	105.9	662	127.9	703	133.5	676	126.1	646	118.8	727	133.2	

* Rate per 100,000 age- and gender-specific population

Source: California Department of Public Health, STD Control Branch
California Department of Finance, Race/Ethnic Population with Age & Sex Detail, 2000-2050, Sacramento, CA, July 2007.
Prepared by: California Department of Public Health, STD Control Branch, July 2008

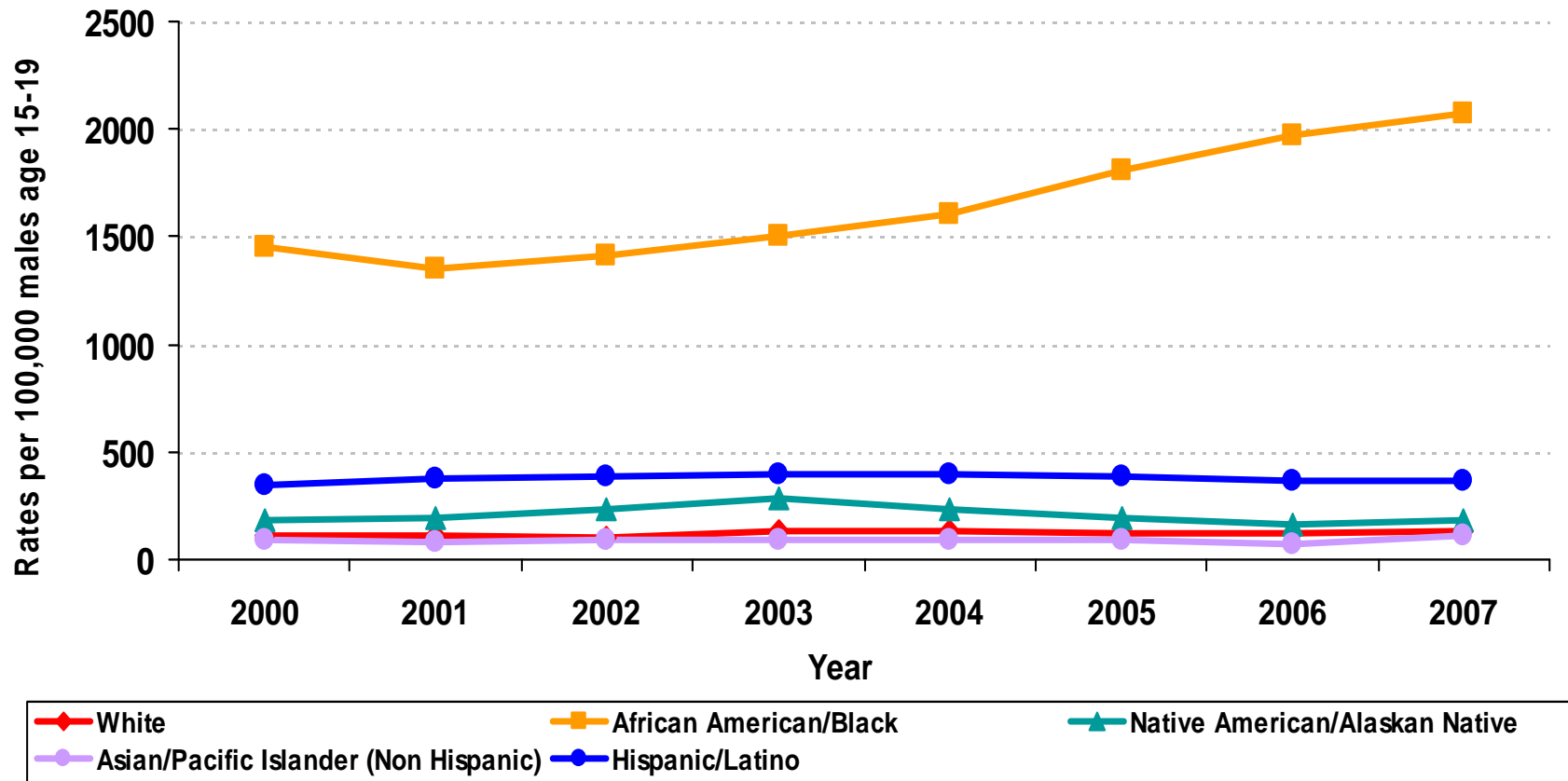
Chlamydia Rates for Adolescent Males by Age Group California, 2000–2007



○ 10-14 ◆ 15-17 □ 18-19 △ 15-19

Source: California Department of Public Health, STD Control Branch
California Department of Finance, Race/Ethnic Population with Age & Sex Detail, 2000-2050, Sacramento, CA, July 2007.
Prepared by: California Department of Public Health, STD Control Branch

Chlamydia Rates by Race/Ethnicity For Males Age 15-19 California, 2000 - 2007



Source: California Department of Public Health, STD Control Branch
 California Department of Finance, Race/Ethnic Population with Age & Sex Detail, 2000-2050, Sacramento, CA, July 2007.
 Prepared by: California Department of Public Health, STD Control Branch

Adolescent Gonorrhea Data – California Females

Gonorrhea Rates for Adolescent Females by Age Group California, 2000–2007																
Age Group	2000		2001		2002		2003		2004		2005		2006		2007	
	Cases	Rate	Cases	Rate	Cases	Rate	Cases	Rate	Cases	Rate	Cases	Rate	Cases	Rate	Cases	Rate
10-14	257	20.2	273	20.6	240	17.5	224	15.9	297	20.7	289	20.2	255	18.0	214	15.4
15-17	1,648	231.4	1,718	236.5	1,769	238.0	1,756	229.8	1,932	244.5	2,403	291.4	2,227	259.4	2,171	246.1
18-19	1,647	346.8	1,890	389.8	1,882	384.2	2,000	401.2	2,387	467.4	2,636	506.5	2,792	520.4	2,690	483.2
15-19	3,295	277.6	3,608	297.9	3,651	296.1	3,756	297.5	4,319	332.0	5,039	374.6	5,019	359.8	4,861	337.9

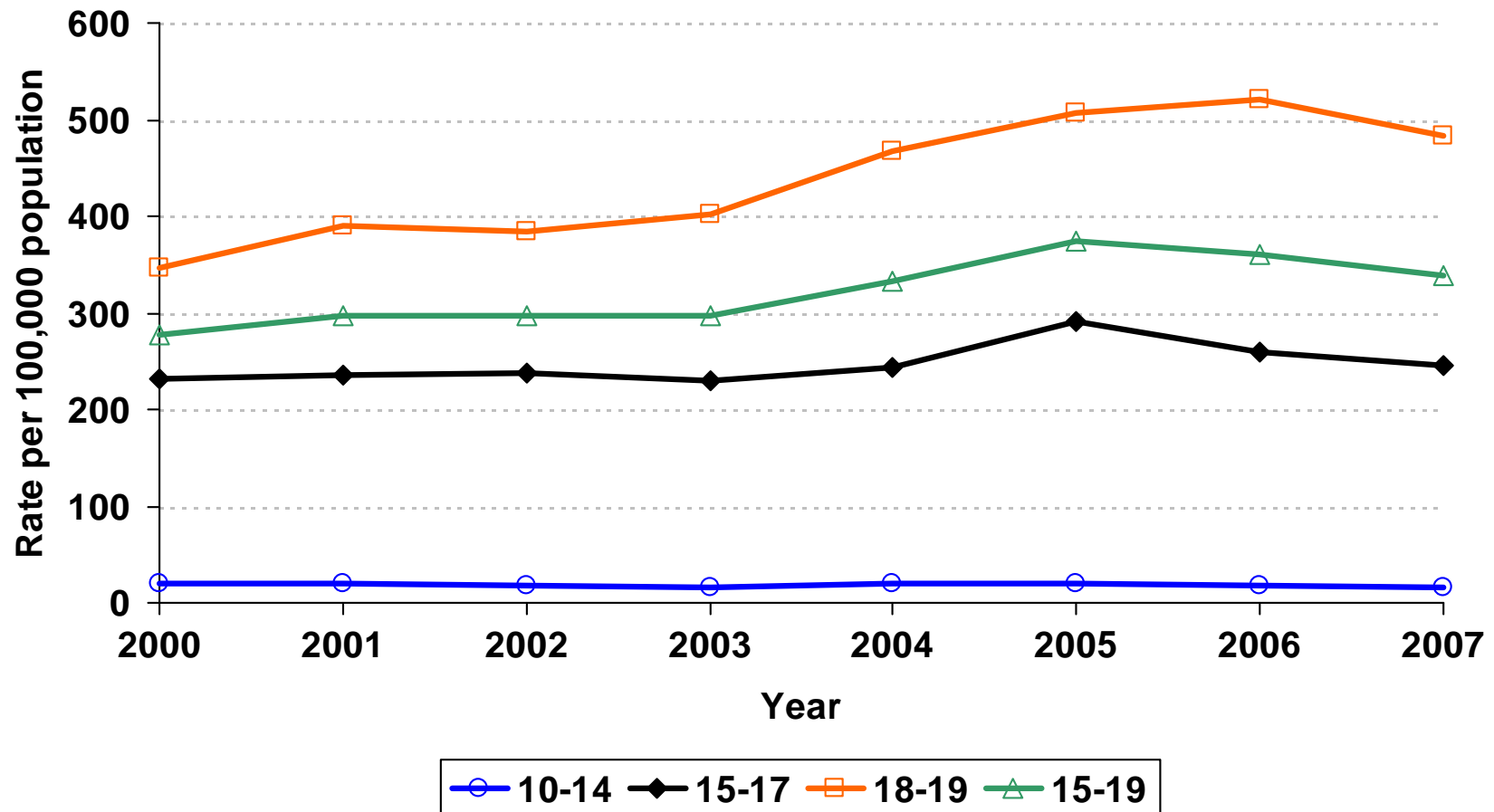
* Rate per 100,000 population

Gonorrhea Rates by Race/Ethnicity, For Female California Residents Age 15-19, 2000- 2007																
Race/Ethnicity	2000		2001		2002		2003		2004		2005		2006		2007	
	Cases	Rate	Cases	Rate	Cases	Rate	Cases	Rate	Cases	Rate	Cases	Rate	Cases	Rate	Cases	Rate
Native American/Alaskan																
Native	9	123.9	13	170.2	12	151.3	6	72.3	10	115.7	16	177.7	27	291.7	24	250.6
Asian/Pacific Islander	50	35.9	59	41.8	55	38.7	53	36.9	67	46.4	85	59.0	107	73.4	98	66.3
African American/Black	1,283	1,536.0	1,331	1,533.0	1,382	1,541.8	1,324	1,426.3	1,505	1,563.0	1,789	1,797.6	1,776	1,747.7	1,852	1,797.3
Hispanic/Latino	503	107.3	593	125.1	628	130.6	700	141.1	840	161.9	969	176.0	1,008	171.2	847	135.4
White	307	67.3	322	68.7	322	67.2	487	99.8	527	105.9	583	115.2	512	99.8	454	88.2

* Rate per 100,000 age- and gender-specific population

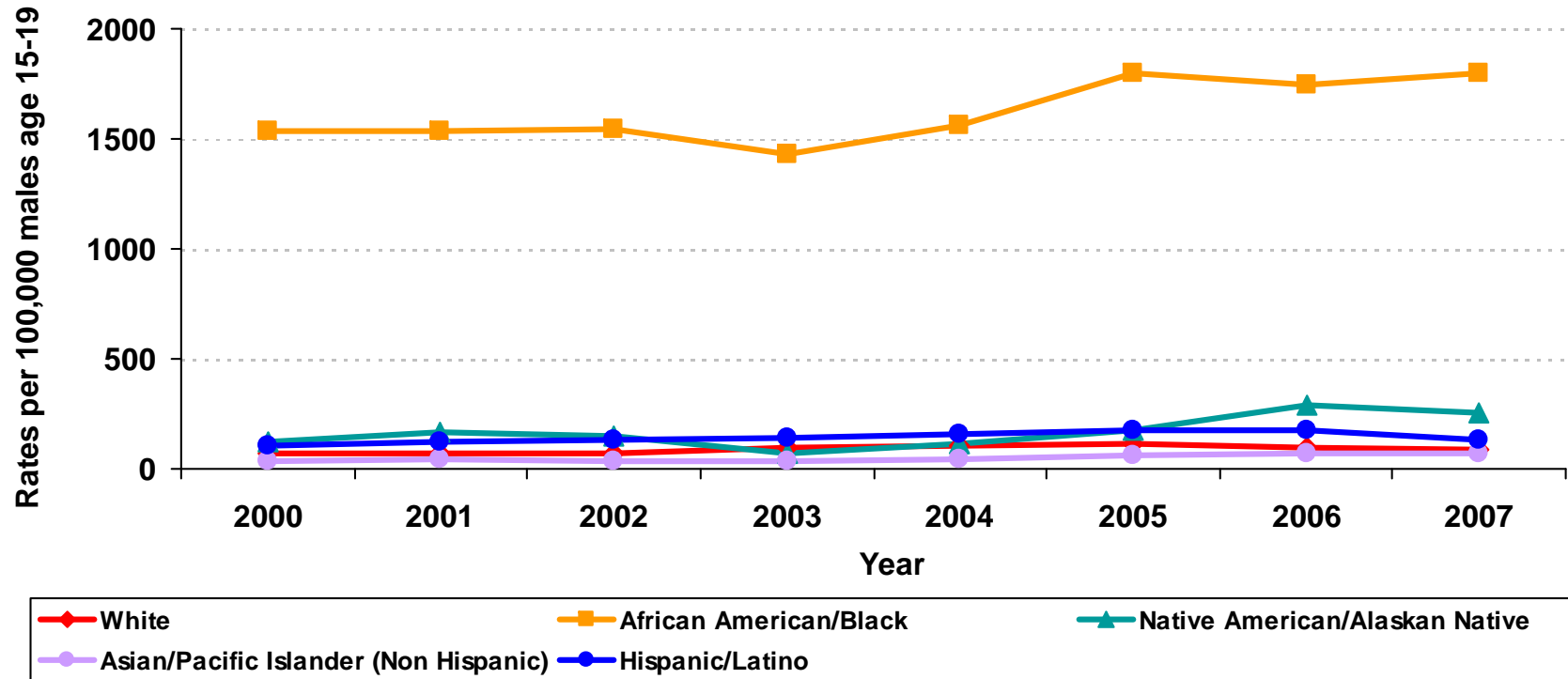
Source: California Department of Public Health, STD Control Branch
California Department of Finance, Race/Ethnic Population with Age & Sex Detail, 2000-2050, Sacramento, CA, July 2007.
Prepared by: California Department of Public Health, STD Control Branch, July 2008

Gonorrhea Rates for Adolescent Females by Age Group California, 2000–2007



Source: California Department of Public Health, STD Control Branch
California Department of Finance, Race/Ethnic Population with Age & Sex Detail, 2000-2050, Sacramento, CA, July 2007.
Prepared by: California Department of Public Health, STD Control Branch

Gonorrhea Rates by Race/Ethnicity For Females Age 15-19 California, 2000 - 2007



Source: California Department of Public Health, STD Control Branch
 California Department of Finance, Race/Ethnic Population with Age & Sex Detail, 2000-2050, Sacramento, CA, July 2007.
 Prepared by: California Department of Public Health, STD Control Branch

Adolescent Gonorrhea Data – California Males

Gonorrhea Rates for Adolescent Males by Age Group, California, 2000–2007																
Age Group	2000		2001		2002		2003		2004		2005		2006		2007	
	Cases	Rate	Cases	Rate	Cases	Rate	Cases	Rate	Cases	Rate	Cases	Rate	Cases	Rate	Cases	Rate
10-14	38	2.8	30	2.2	28	1.9	41	2.8	45	3.0	65	4.3	56	3.8	50	3.4
15-17	474	62.4	472	61.5	533	68.2	553	68.9	714	86.2	807	93.3	781	86.7	839	90.7
18-19	904	174.4	932	176.2	958	180.9	1,035	194.7	1,203	222.0	1,392	251.9	1,444	253.4	1,453	245.9
15-19	1,378	107.8	1,404	108.3	1,491	113.7	1,588	119.0	1,917	139.9	2,199	155.1	2,225	151.3	2,292	151.1

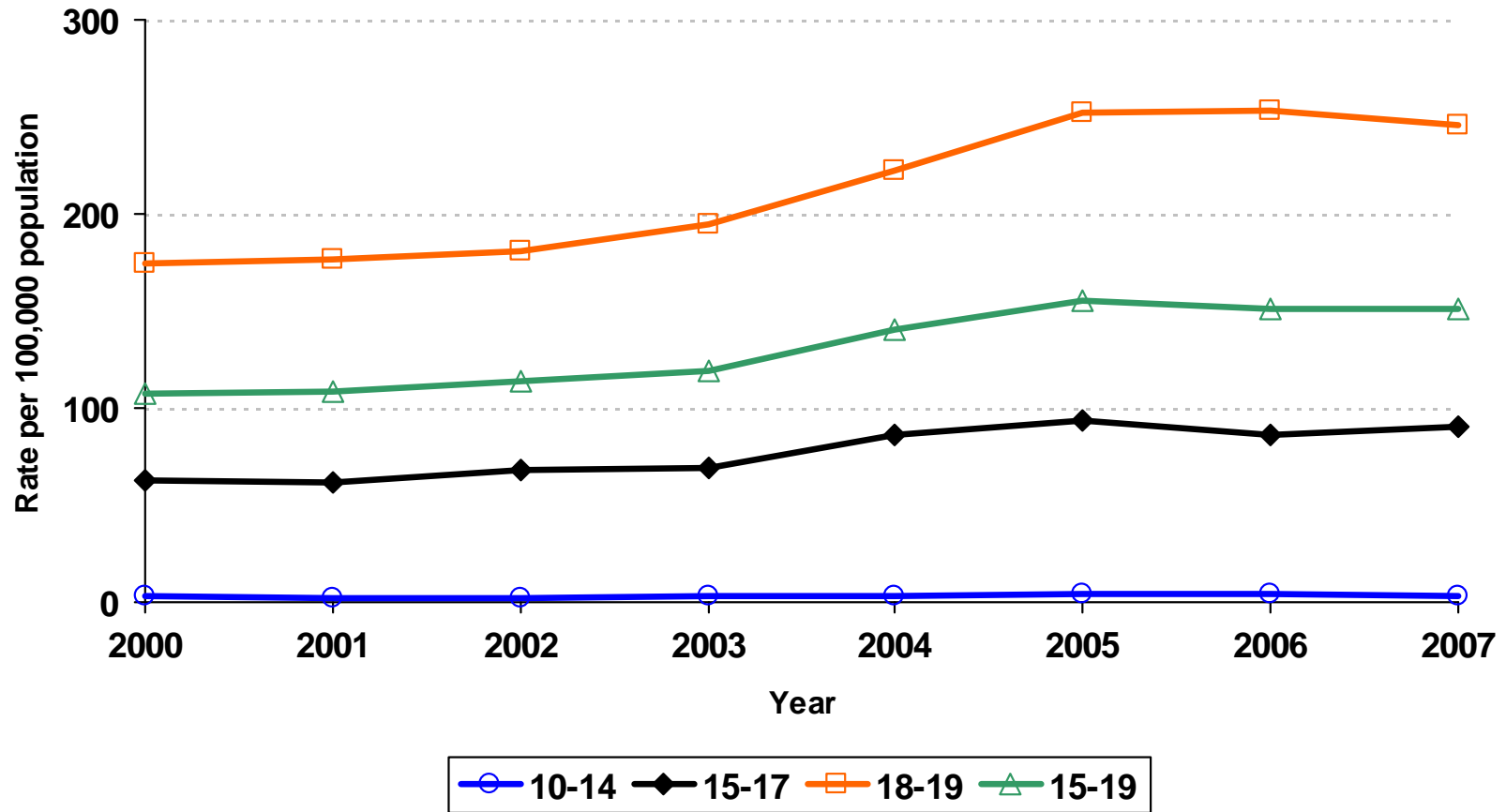
* Rate per 100,000 population

Gonorrhea Rates by Race/Ethnicity, For Male California Residents Age 15-19, 2000- 2007																
Race/Ethnicity	2000		2001		2002		2003		2004		2005		2006		2007	
	Cases	Rate	Cases	Rate	Cases	Rate	Cases	Rate	Cases	Rate	Cases	Rate	Cases	Rate	Cases	Rate
Native American/Alaskan	0	0.0	5	61.9	1	11.8	4	45.6	8	88.1	4	42.5	6	62.2	11	111.4
Asian/Pacific Islander	11	7.5	14	9.3	20	13.2	22	14.3	28	18.1	26	16.9	32	20.6	26	16.5
African American/Black	513	575.0	503	543.0	528	554.3	600	612.8	707	699.7	909	872.8	890	837.3	922	857.0
Hispanic/Latino	266	51.4	291	56.6	298	58.2	346	66.2	418	76.8	437	75.7	446	72.1	464	70.6
White	106	21.8	118	23.6	131	25.7	165	31.9	196	37.2	198	36.9	149	27.4	161	29.5

* Rate per 100,000 age- and gender-specific population

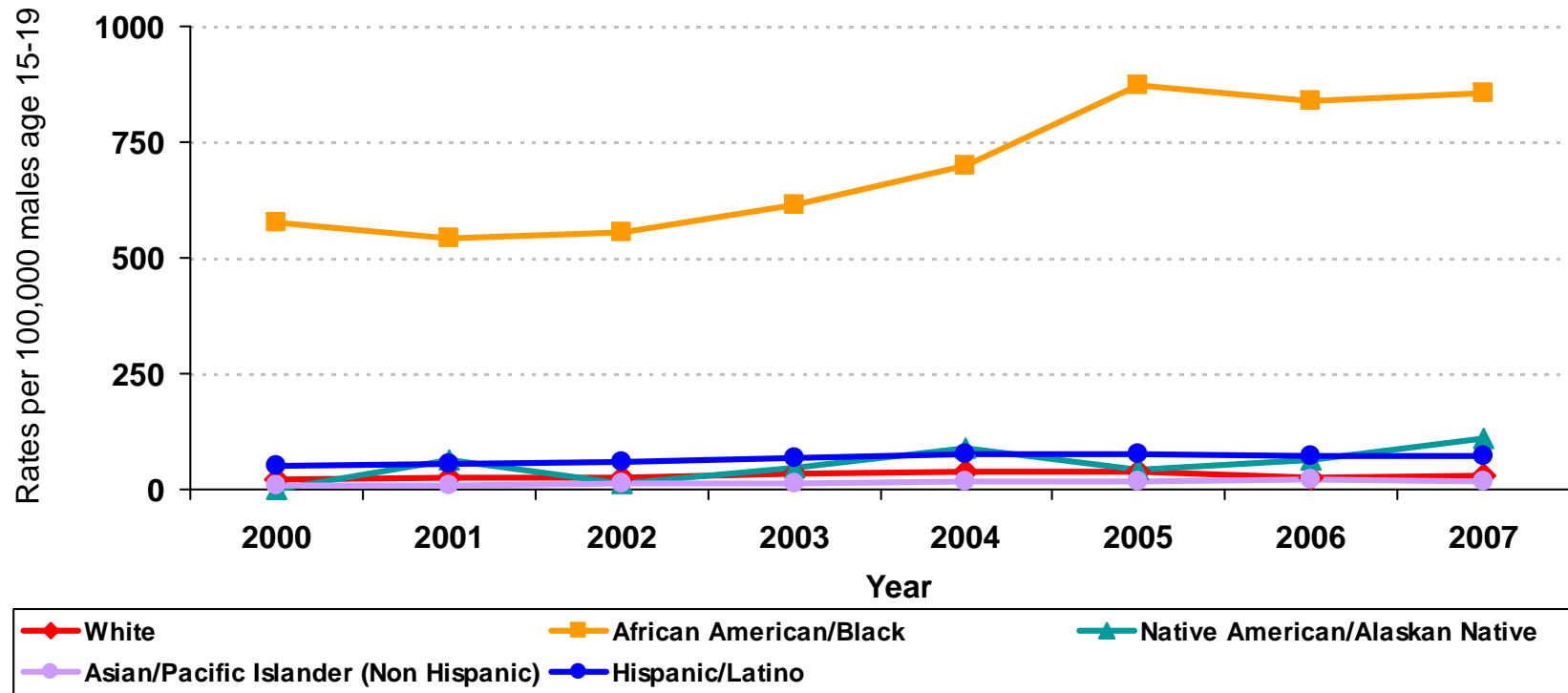
Source: California Department of Public Health, STD Control Branch
California Department of Finance, Race/Ethnic Population with Age & Sex Detail, 2000-2050, Sacramento, CA, July 2007.
Prepared by: California Department of Public Health, STD Control Branch, July 2008

Gonorrhea Rates for Adolescent Males by Age Group California, 2000–2007



Source: California Department of Public Health, STD Control Branch
California Department of Finance, Race/Ethnic Population with Age & Sex Detail, 2000-2050, Sacramento, CA, July 2007.
Prepared by: California Department of Public Health, STD Control Branch

Gonorrhea Rates by Race/Ethnicity For Males Age 15-19 California, 2000 - 2007



Source: California Department of Public Health, STD Control Branch
California Department of Finance, Race/Ethnic Population with Age & Sex Detail, 2000-2050, Sacramento, CA, July 2007.
Prepared by: California Department of Public Health, STD Control Branch

Adolescent P&S Syphilis Data – California Females

P&S Syphilis Rates for Adolescent Females by Age Group, California, 2000–2007																
Age Group	2000		2001		2002		2003		2004		2005		2006		2007	
	Cases	Rate	Cases	Rate	Cases	Rate	Cases	Rate	Cases	Rate	Cases	Rate	Cases	Rate	Cases	Rate
10-14	1	0.1	0	0.0	0	0.0	2	0.1	2	0.1	0	0.0	0	0.0	0	0.0
15-17	1	0.1	2	0.3	2	0.3	1	0.1	3	0.4	8	1.0	8	0.9	5	0.6
18-19	2	0.4	4	0.8	4	0.8	6	1.2	3	0.6	4	0.8	8	1.5	11	2.0
15-19	3	0.3	6	0.5	6	0.5	7	0.6	6	0.5	12	0.9	16	1.1	16	1.1

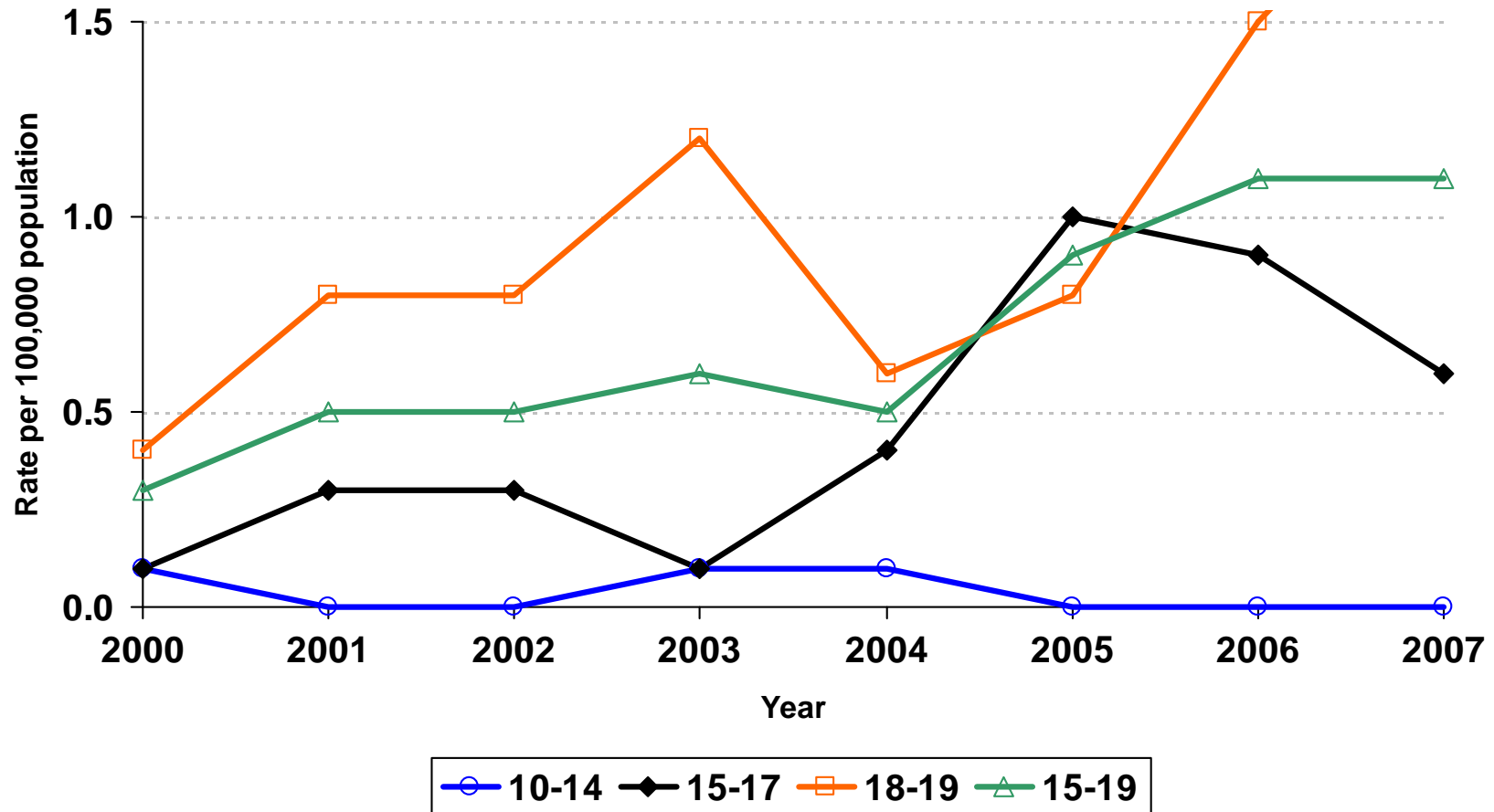
* Rate per 100,000 population

P&S Syphilis Rates by Race/Ethnicity, For Female California Residents Age 15-19, 2000- 2007																
Race/Ethnicity	2000		2001		2002		2003		2004		2005		2006		2007	
	Cases	Rate	Cases	Rate	Cases	Rate	Cases	Rate	Cases	Rate	Cases	Rate	Cases	Rate	Cases	Rate
Native American/Alaskan Native	0	0.0	0	0.0	0	0.0	0	0.0	0	0.0	0	0.0	0	0.0	0	0.0
Asian/Pacific Islander	0	0.0	1	0.7	1	0.7	0	0.0	0	0.0	0	0.0	0	0.0	0	0.0
African American/Black	1	1.2	2	2.3	1	1.1	1	1.1	2	2.1	2	2.0	6	5.9	1	1.0
Hispanic/Latino	1	0.2	3	0.6	3	0.6	5	1.0	4	0.8	8	1.5	9	1.5	13	2.1
White	1	0.2	0	0.0	1	0.2	1	0.2	0	0.0	2	0.4	1	0.2	2	0.4

* Rate per 100,000 age- and gender-specific population

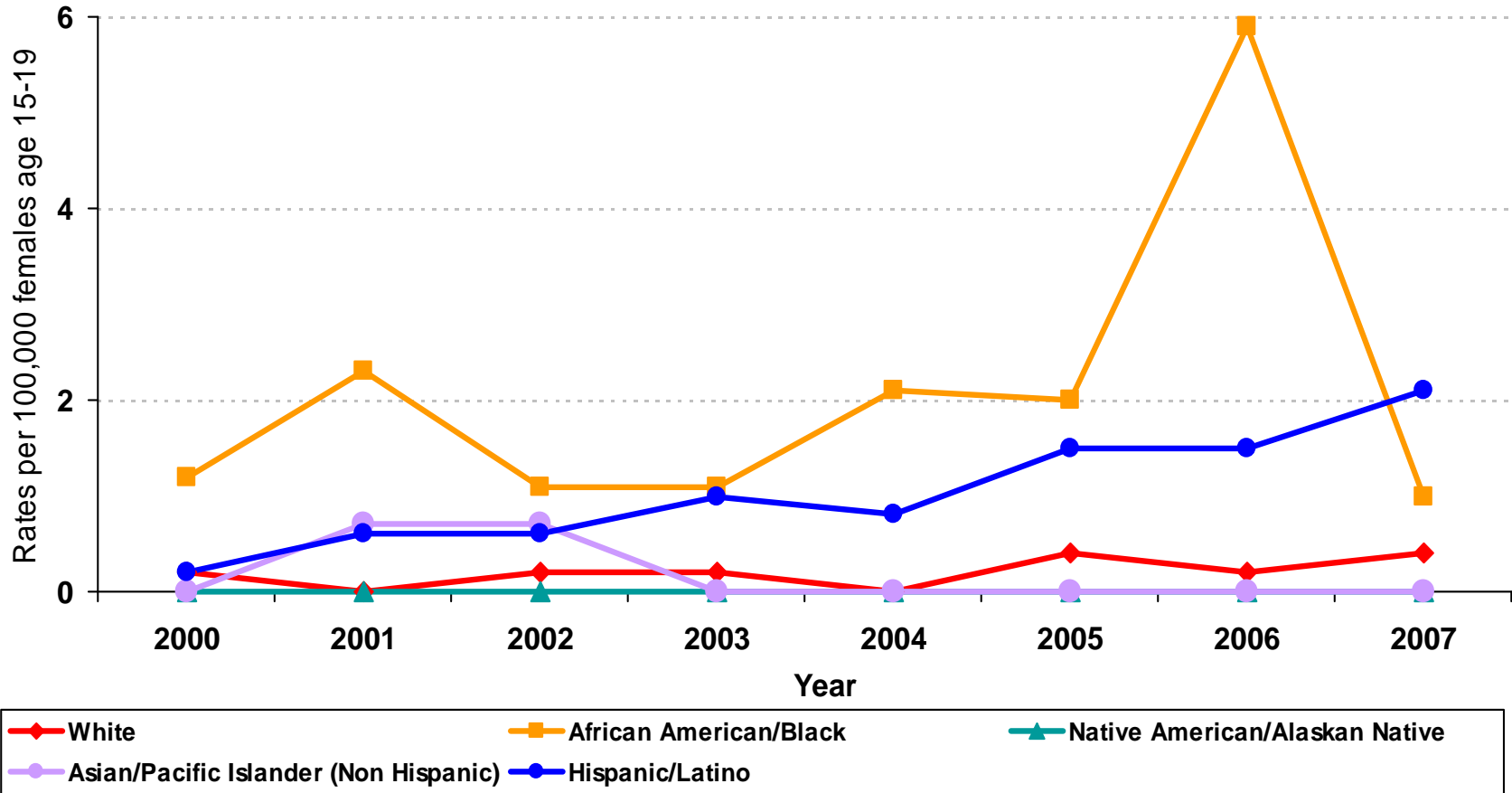
Source: California Department of Public Health, STD Control Branch
California Department of Finance, Race/Ethnic Population with Age & Sex Detail, 2000-2050, Sacramento, CA, July 2007.
Prepared by: California Department of Public Health, STD Control Branch, July 2008

P&S Syphilis Rates for Adolescent Females by Age Group California, 2000–2007



Source: California Department of Public Health, STD Control Branch
 California Department of Finance, Race/Ethnic Population with Age & Sex Detail, 2000-2050, Sacramento, CA, July 2007.
 Prepared by: California Department of Public Health, STD Control Branch

P&S Syphilis Rates by Race/Ethnicity For Females Age 15-19 California, 2000 - 2007



Source: California Department of Public Health, STD Control Branch
 California Department of Finance, Race/Ethnic Population with Age & Sex Detail, 2000-2050, Sacramento, CA, July 2007.
 Prepared by: California Department of Public Health, STD Control Branch

Adolescent P&S Syphilis Data – California Males

P&S Syphilis Rates for Adolescent Males by Age Group California, 2000–2007																
Age Group	2000		2001		2002		2003		2004		2005		2006		2007	
	Cases	Rate	Cases	Rate	Cases	Rate	Cases	Rate	Cases	Rate	Cases	Rate	Cases	Rate	Cases	Rate
10-14	0	0.0	0	0.0	1	0.1	0	0.0	0	0.0	0	0.0	1	0.1	1	0.1
15-17	2	0.3	4	0.5	3	0.4	3	0.4	6	0.7	7	0.8	13	1.4	6	0.6
18-19	1	0.2	7	1.3	7	1.3	9	1.7	8	1.5	13	2.4	22	3.9	38	6.4
15-19	3	0.2	11	0.8	10	0.8	12	0.9	14	1.0	20	1.4	35	2.4	44	2.9

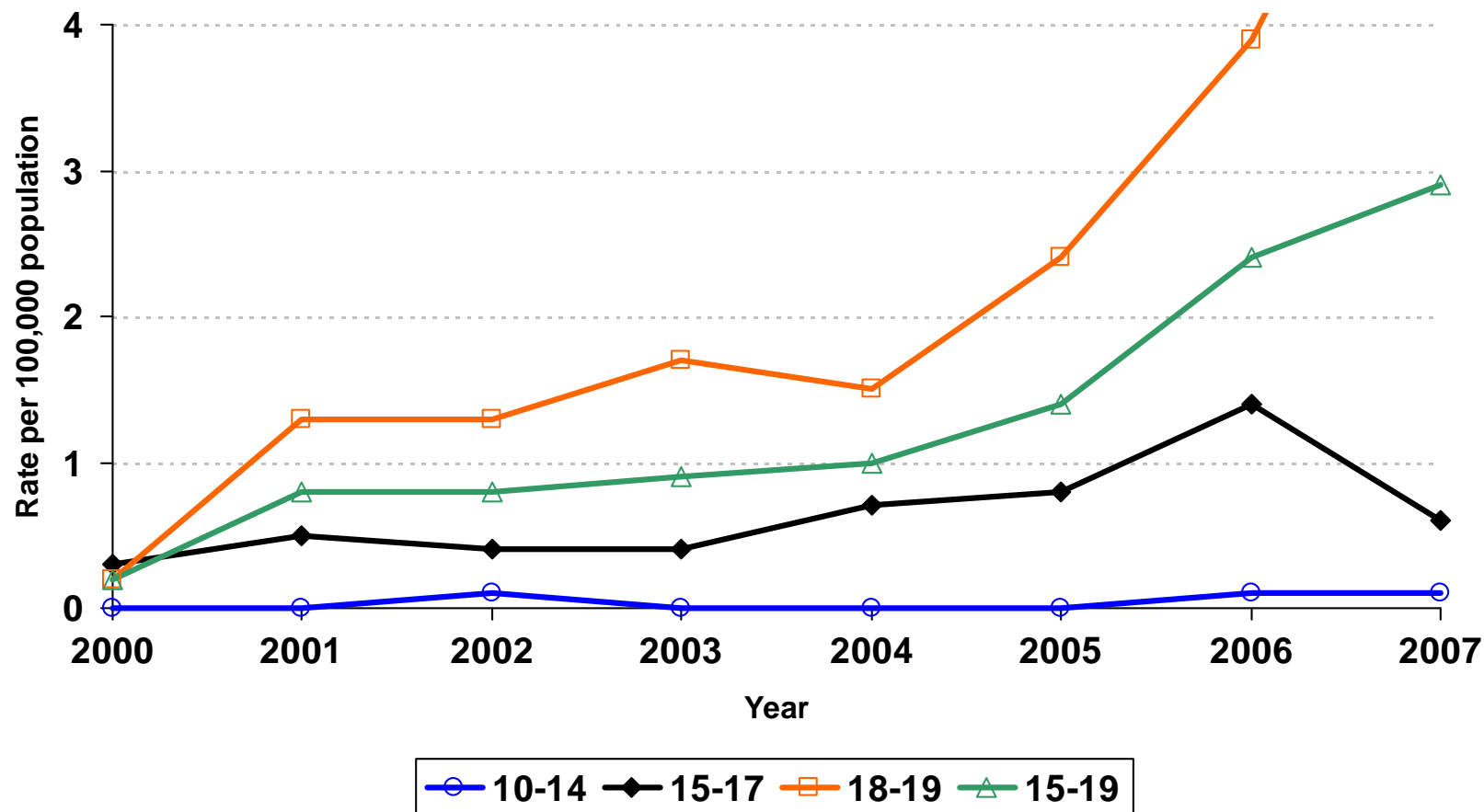
* Rate per 100,000 population

P&S Syphilis Rates by Race/Ethnicity, For Male California Residents Age 15-19, 2000- 2007																
Race/Ethnicity	2000		2001		2002		2003		2004		2005		2006		2007	
	Cases	Rate	Cases	Rate	Cases	Rate	Cases	Rate	Cases	Rate	Cases	Rate	Cases	Rate	Cases	Rate
Native American/Alaskan																
Native	0	0.0	0	0.0	0	0.0	0	0.0	0	0.0	0	0.0	0	0.0	1	10.1
Asian/Pacific Islander	0	0.0	0	0.0	1	0.7	0	0.0	2	1.3	0	0.0	0	0.0	0	0.0
African American/Black	0	0.0	1	1.1	1	1.0	3	3.1	2	2.0	4	3.8	14	13.2	14	13.0
Hispanic/Latino	3	0.6	9	1.8	7	1.4	9	1.7	9	1.7	8	1.4	12	1.9	20	3.0
White	0	0.0	1	0.2	1	0.2	0	0.0	1	0.2	8	1.5	6	1.1	9	1.6

* Rate per 100,000 age- and gender-specific population

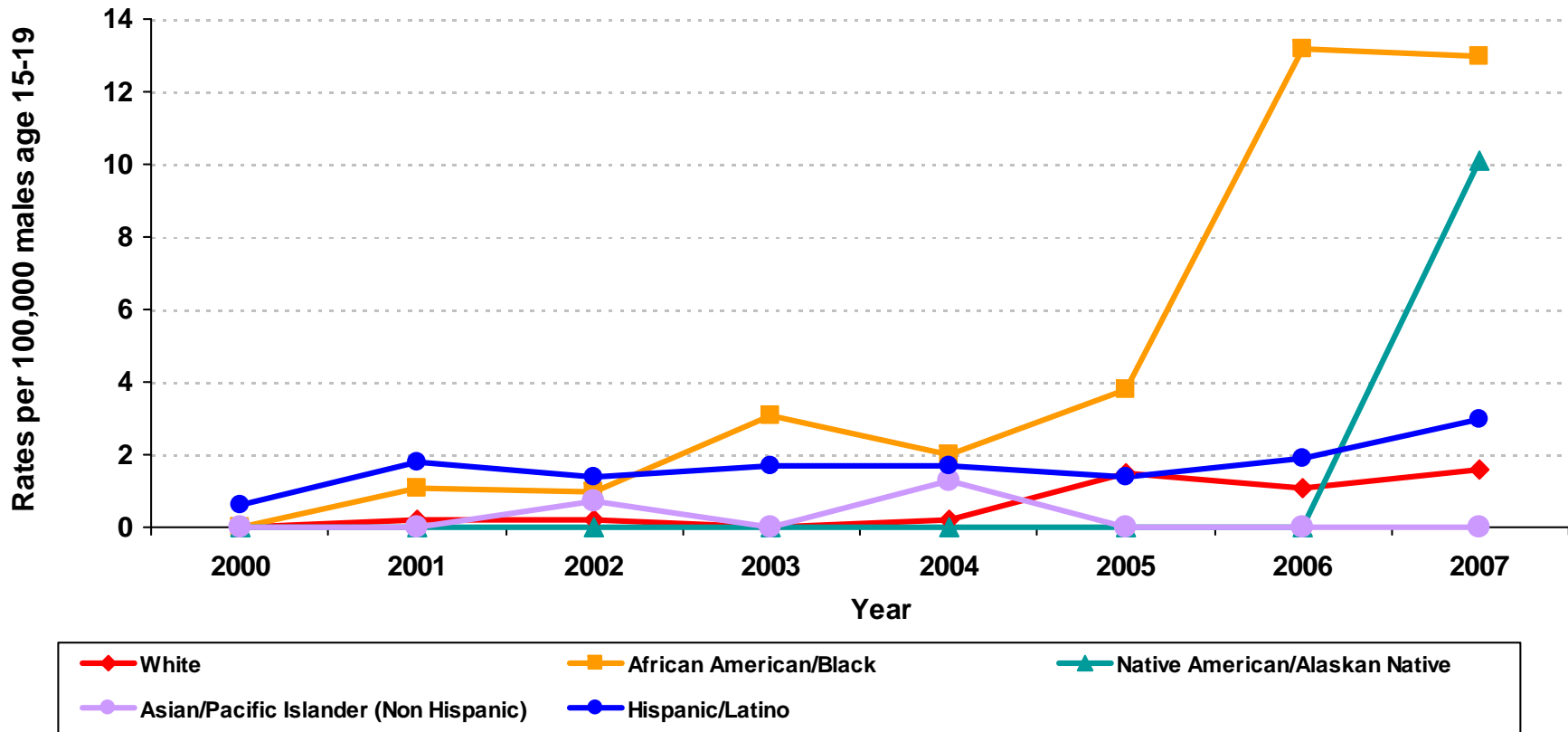
Source: California Department of Public Health, STD Control Branch
 California Department of Finance, Race/Ethnic Population with Age & Sex Detail, 2000-2050, Sacramento, CA, July 2007.
 Prepared by: California Department of Public Health, STD Control Branch, July 2008

P&S Syphilis Rates for Adolescent Males by Age Group California, 2000–2007



Source: California Department of Public Health, STD Control Branch
 California Department of Finance, Race/Ethnic Population with Age & Sex Detail, 2000-2050, Sacramento, CA, July 2007.
 Prepared by: California Department of Public Health, STD Control Branch

P&S Syphilis Rates by Race/Ethnicity For Males Age 15-19 California, 2000 - 2007



Source: California Department of Public Health, STD Control Branch
 California Department of Finance, Race/Ethnic Population with Age & Sex Detail, 2000-2050, Sacramento, CA, July 2007.
 Prepared by: California Department of Public Health, STD Control Branch

Adolescent STD Data: Chlamydia California

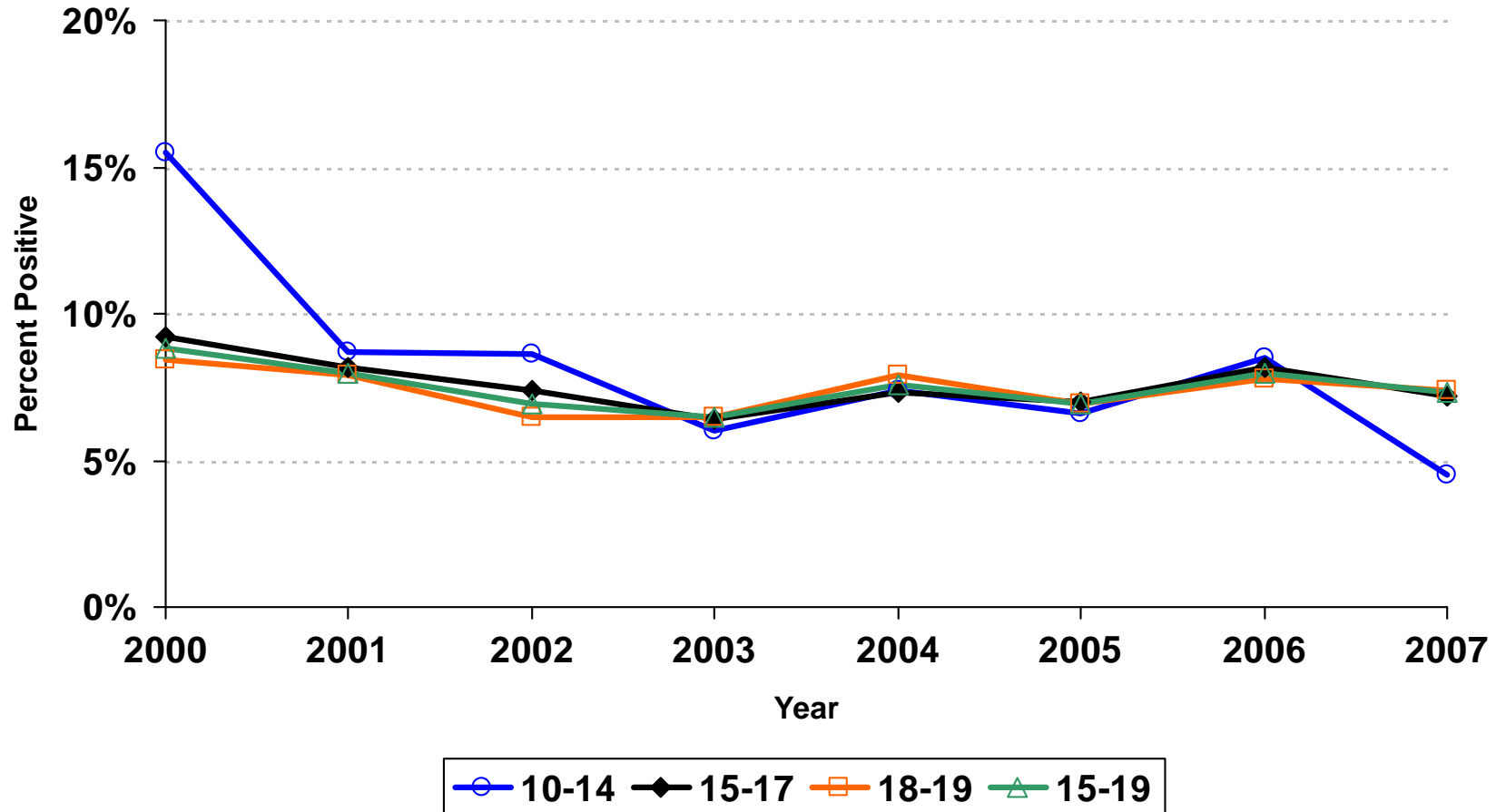
Chlamydia Prevalence Monitoring – Family Planning Clinics, Percent Positive for Adolescent Females by Age Group, California, 2000–2007								
Age Group	2000	2001	2002	2003	2004	2005	2006	2007
10-14	16	9	9	6	7	7	9	5
15-17	9	8	7	6	7	7	8	7
18-19	8	8	7	7	8	7	8	7
15-19	9	8	7	7	8	7	8	7

Chlamydia Prevalence Monitoring – STD Clinics, Percent Positive for Adolescent Females by Age Group, California, 2000–2007								
Age Group	2000	2001	2002	2003	2004	2005	2006	2007
10-14	22	13	25	22	20	25	32	28
15-17	26	23	23	30	22	27	28	28
18-19	19	22	22	22	23	24	23	25
15-19	22	22	22	25	23	25	25	26

Source: California Department of Public Health, STD Control Branch; Los Angeles Infertility Prevention Project; and San Francisco Infertility Prevention Project

Prepared by: California Department of Public Health, STD Control Branch

Chlamydia Prevalence Monitoring – Family Planning Clinics Percent Positive for Adolescent Females by Age Group California, 2000–2007



Source: California Department of Public Health, STD Control Branch; Los Angeles Infertility Prevention Project; and San Francisco Infertility Prevention Project

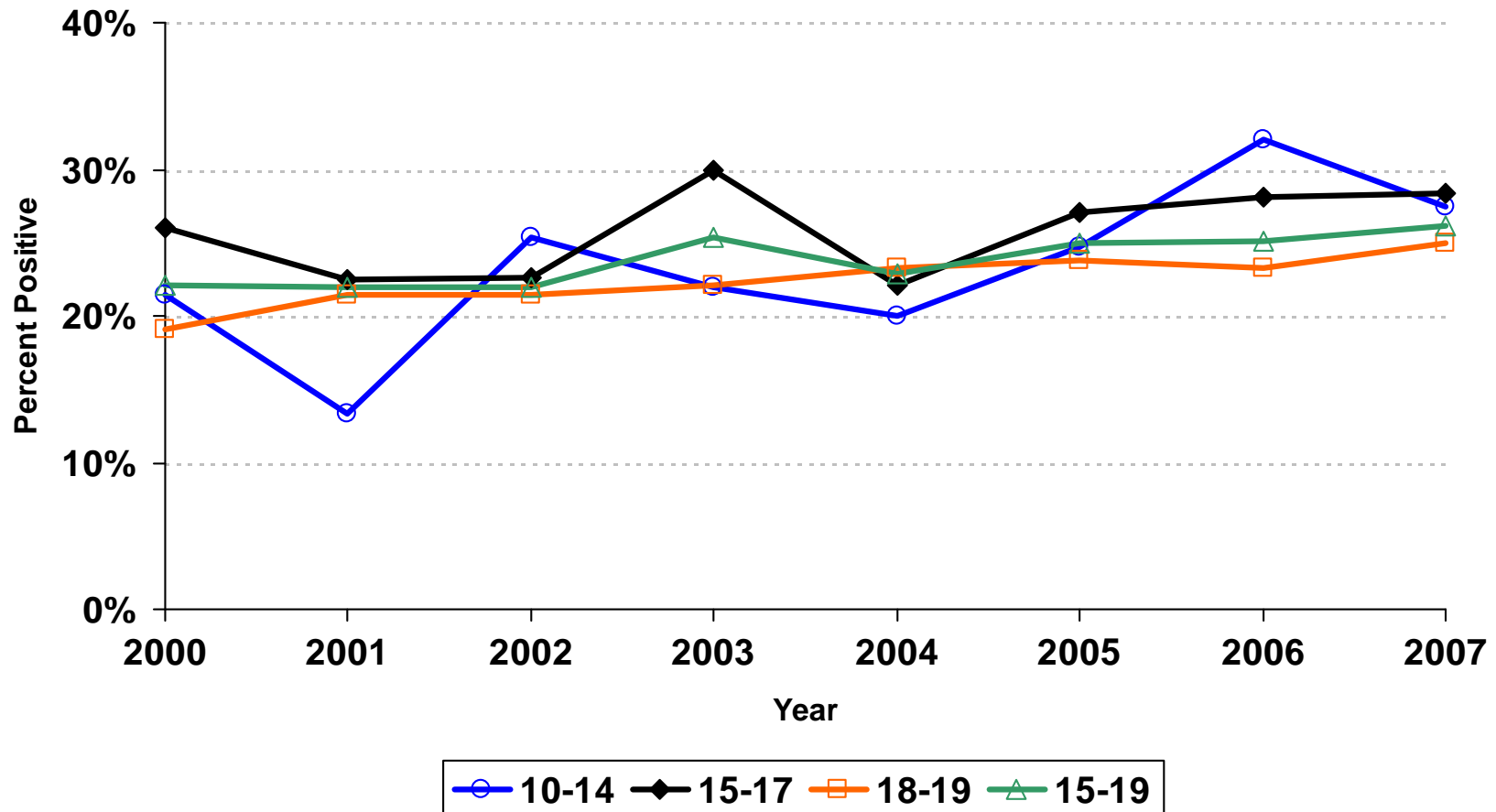
Prepared by: California Department of Public Health, STD Control Branch

ASHWG Data Integration Subcommittee – August 2009

Chlamydia Prevalence Monitoring – STD Clinics

Percent Positive for Adolescent Females by Age Group

California, 2000–2007



Source: California Department of Public Health, STD Control Branch; Los Angeles Infertility Prevention Project; and San Francisco Infertility Prevention Project

Prepared by: California Department of Public Health, STD Control Branch

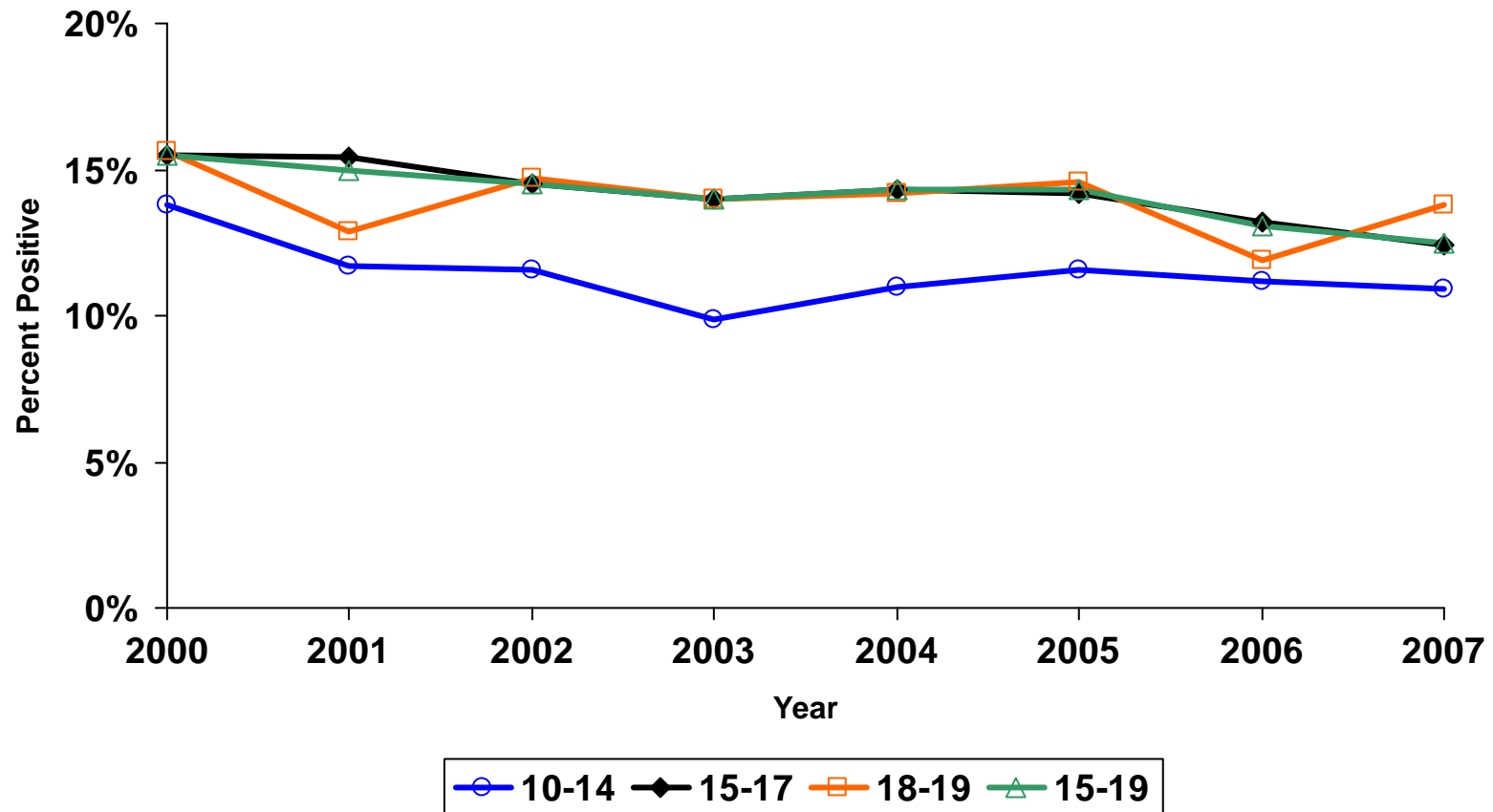
Adolescent STD Data: Chlamydia California

Chlamydia Prevalence Monitoring – Juvenile Detention, Percent Positive for Adolescent Females by Age Group, California, 2000–2007								
Age Group	2000	2001	2002	2003	2004	2005	2006	2007
10-14	14	12	12	10	11	12	11	11
15-17	16	15	15	14	14	14	13	12
18-19	16	13	15	14	14	15	12	14
15-19	16	15	15	14	14	14	13	13

Chlamydia Prevalence Monitoring – Northern CA MCO, Percent Positive for Adolescent Females by Age Group, California, 2000–2007								
Age Group	2000	2001	2002	2003	2004	2005	2006	2007
10-14	6	7	5	4	5	4	5	5
15-17	6	6	5	6	5	4	5	5
18-19	5	5	5	5	5	5	7	7
15-19	5	6	5	6	5	5	6	6

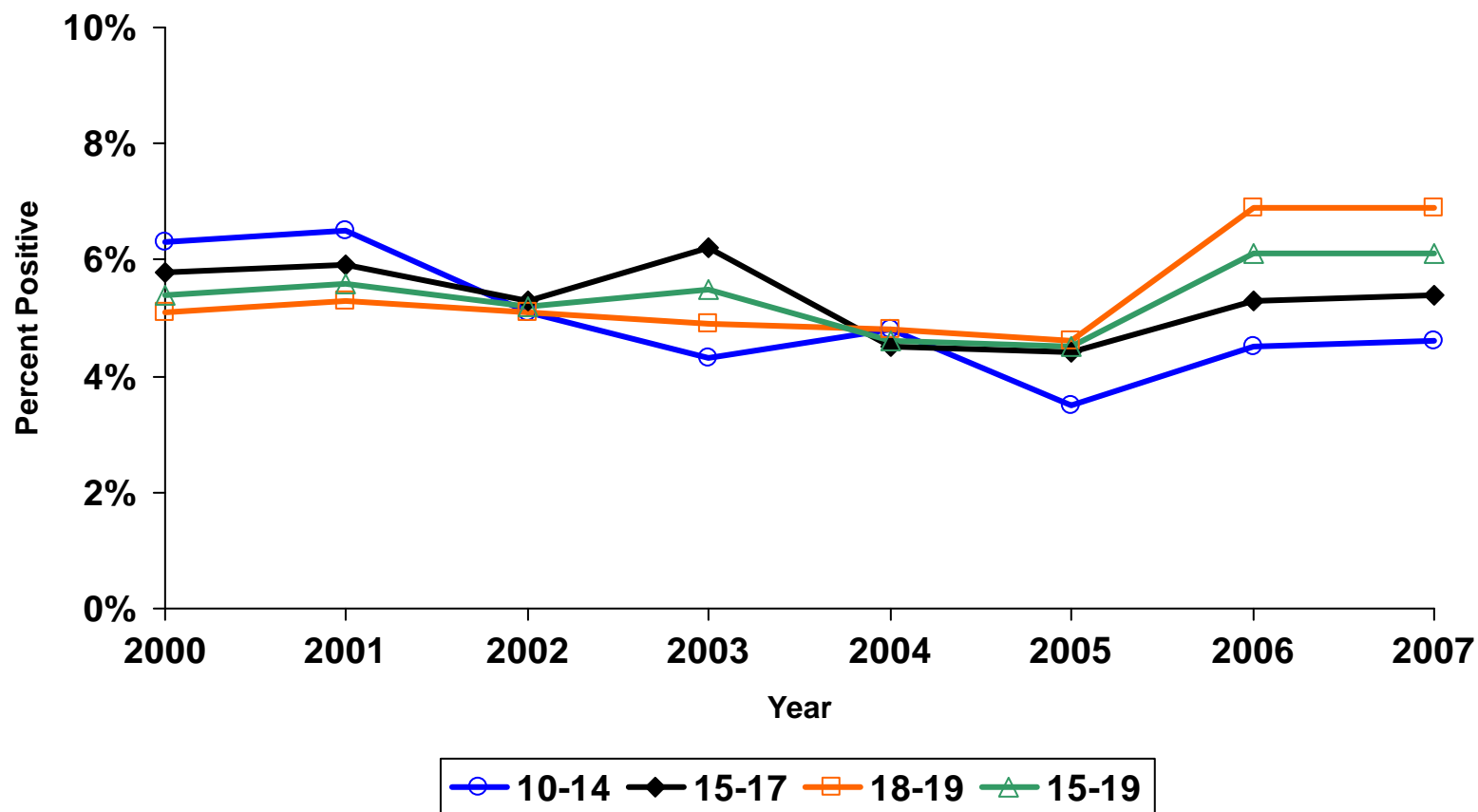
Source: California Department of Public Health, STD Control Branch; Los Angeles Infertility Prevention Project; San Francisco Infertility Prevention Project; and Northern California Managed Care Organization (MCO)
Prepared by: California Department of Public Health, STD Control Branch

Chlamydia Prevalence Monitoring – Juvenile Detention Percent Positive for Adolescent Females by Age Group California, 2000–2007



Source: California Department of Public Health, STD Control Branch; Los Angeles Infertility Prevention Project; and San Francisco Infertility Prevention Project
Prepared by: California Department of Public Health, STD Control Branch

Chlamydia Prevalence Monitoring – Northern CA MCO Percent Positive for Adolescent Females by Age Group California, 2000–2007



Source: California Department of Public Health, STD Control Branch; Northern California Managed Care Organization (MCO)
Prepared by: California Department of Public Health, STD Control Branch